

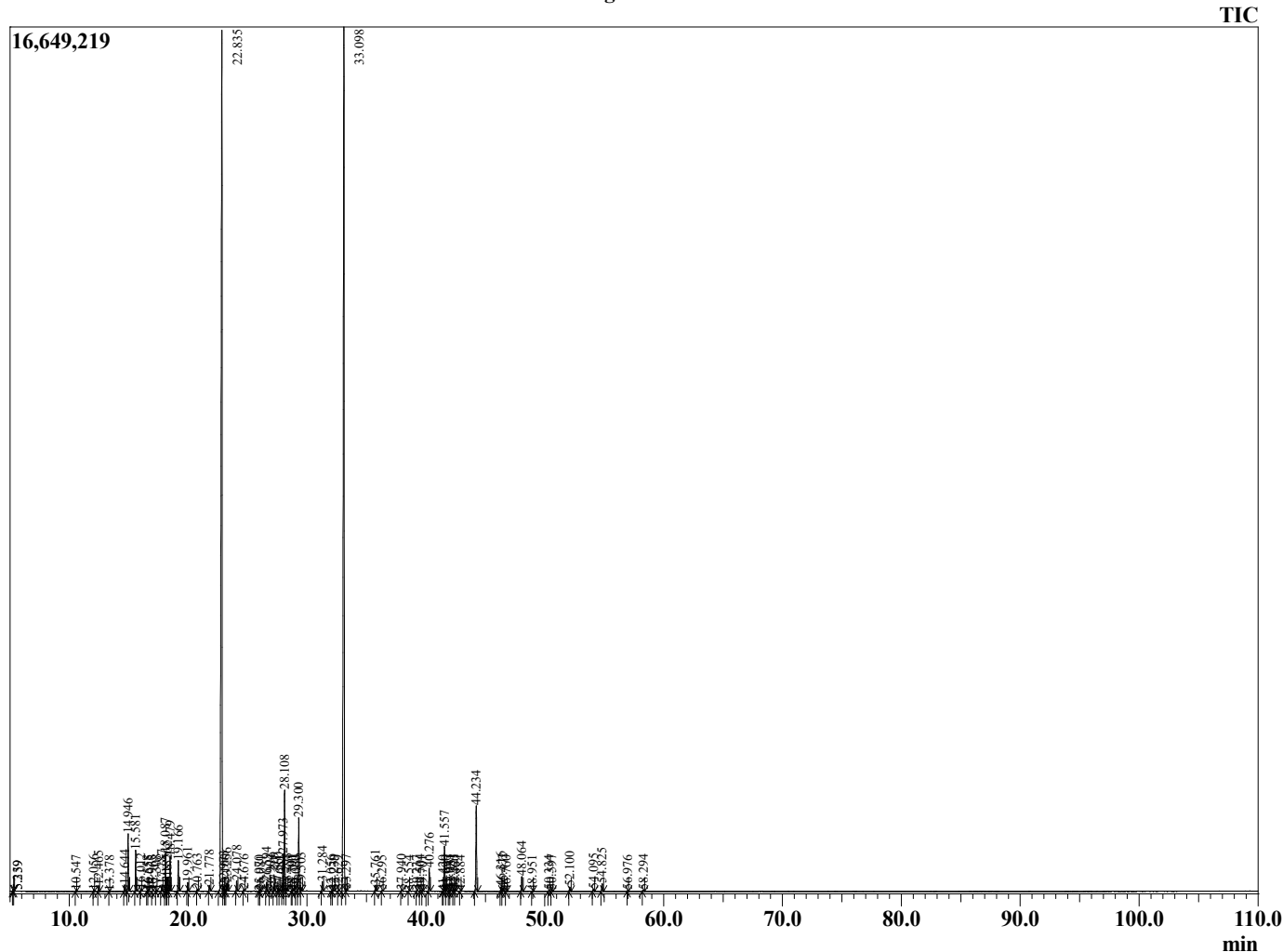
Sample Information

Analyzed by : AG
 Analyzed : 1/26/2024 12:48:24 AM
 Sample Type : Essential Oil
 Sample Name : Bergamot Mint
 Injection Volume : 0.10
 Lot Number : 12695
 Instrument ID : GC-3

Peak Report TIC

R.Time	Name	Area%
4.109	3-Methylbutanal	0.02
4.216	2-Methylbutanal	0.01
5.259	1-Pentanol	0.02
5.339	2-Methylbutanol	0.01
10.547	2,5-Diethyl Tetrahydrofuran	0.02
12.056	alpha-Phellandrene	0.03
12.465	alpha-Pinene	0.13
13.378	Unidentified	0.01
14.644	Sabinene	0.17
14.946	beta-Pinene	1.48
15.581	Myrcene	1.07
16.012	Octan-3-ol	0.06
16.558	Unidentified	0.01
16.655	Unidentified	0.01
16.965	Unidentified	0.01
17.308	alpha-Terpinene	0.04
17.787	para-Cymene	0.19
18.087	Limonene	0.98
18.185	Unidentified	0.03
18.262	1,8-cineole	0.38
18.479	cis-beta-Ocimene	0.91
19.166	trans-beta-Ocimene	0.84
19.961	gamma-Terpinene	0.24
20.763	cis-Linalool oxide (furanoid)	0.06
21.778	Terpinolene	0.25
22.835	Linalool	40.44
22.973	2-Methylbutyl-2-methylbutyrate	0.18
23.100	Unidentified	0.02
23.256	Octen-3-yl acetate	0.27
24.078	3-Octyl acetate	0.31
24.676	allo-Ocimene	0.05
25.970	Camphor	0.01
26.081	Isopulegol	0.02
26.594	Menthone	0.29
26.904	trans-Pinocamphone	0.03
27.209	Isomenthone	0.11
27.560	Neomenthol	0.09
27.681	Isobornyl acetate	0.02
27.973	Isopinocampone	1.14
28.108	Menthol	3.08
28.298	Terpinen-4-ol	0.08
28.700	Unidentified	0.01
28.791	Unidentified	0.04
29.060	Unidentified	0.01
29.300	alpha-Terpineol	2.29
29.503	cis-Anethole	0.11
31.284	Nerol	0.30
32.056	Unidentified	0.01
32.239	Pulegone	0.04
32.629	Carvone	0.02
33.098	Linalyl acetate	36.86
33.297	Piperitone	0.04
35.761	Menthyl acetate	0.19
36.295	Carvacrol	0.02
37.940	Myrtenyl acetate	0.04
38.554	Unidentified	0.01
39.237	Myrcen-8-yl acetate	0.02
39.504	alpha-Terpinyl acetate	0.03
39.701	Citronellyl acetate	0.02
40.276	Neryl acetate	0.73
41.420	Unidentified	0.01
41.557	Geranyl acetate	1.47

Chromatogram 98401-92



This report is provided as a courtesy to our customers for their evaluation only. Any publishing, copying, use, dissemination, or distribution of this report, including online, without the express written permission of Shay and Company is strictly prohibited. To inquire about licensing analytical reporting services, please contact orders@shayandcompany.com.

R.Time	Name	Area%
41.690	Unidentified	0.01
41.943	beta-Bourbonene	0.04
42.081	Carveol	0.05
42.321	beta-Elemene	0.07
42.460	cis-Jasmone	0.02
42.884	Unidentified	0.01
44.234	beta-Caryophyllene	2.98
46.316	cis-beta-Farnesene	0.14
46.472	alpha-Humulene	0.10
46.760	(-)-Alloaromadendrene	0.03
48.064	beta-Copaene	0.50
48.951	Unidentified	0.01
50.334	delta-Cadinene	0.02
50.597	Unidentified	0.05
52.100	Hedycaryol	0.15
54.095	Caryophyllene oxide	0.09
54.825	Viridiflorol	0.27
56.976	gamma-Eudesmol	0.02
58.294	alpha-Eudesmol	0.05
		100.00