



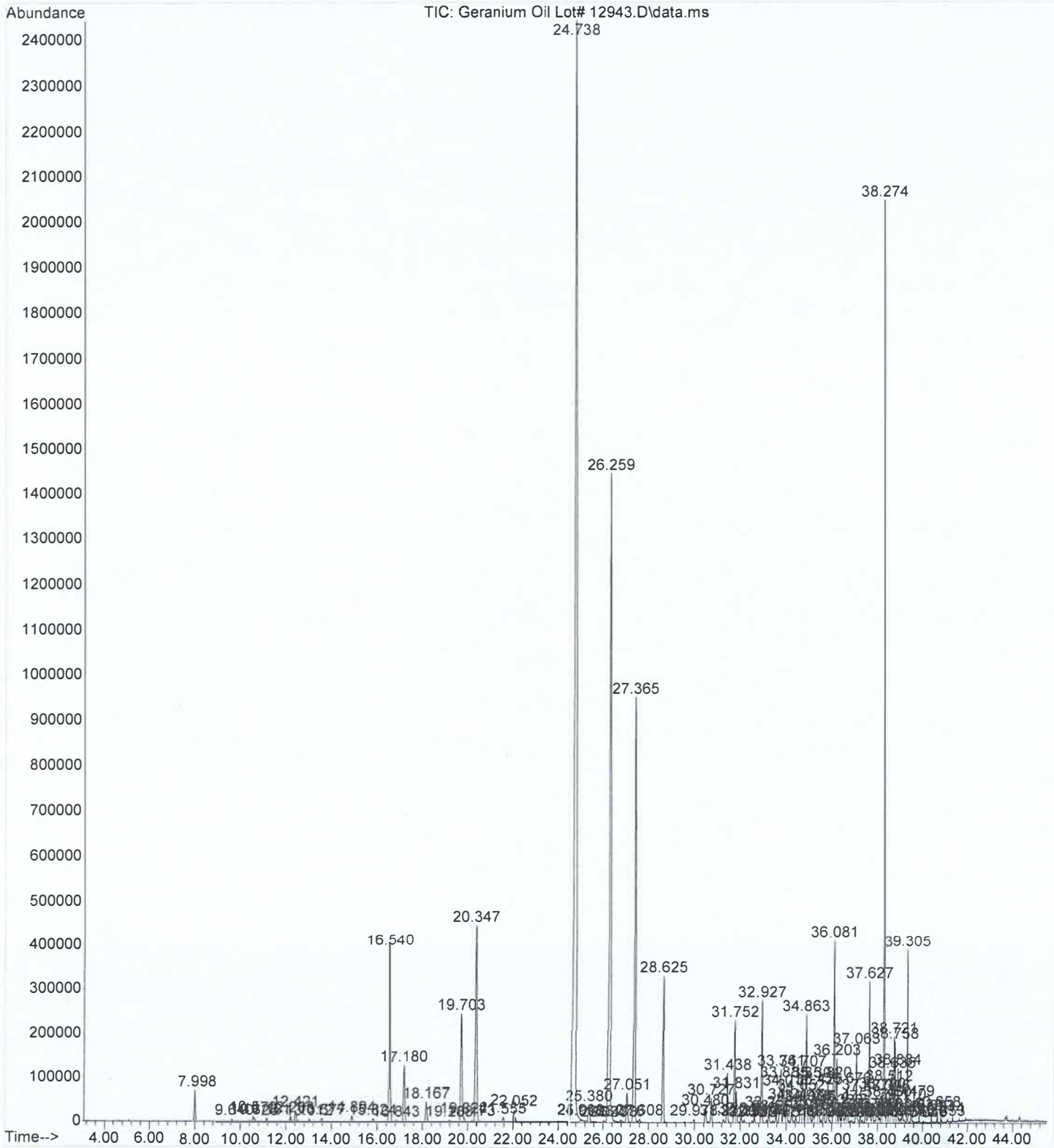
**GERANIUM OIL EGYPTIAN**

**CHEMICAL COMPOSITION (GC-MS)**

**LOT NO. 12943**

<b>PEAK RT</b>	<b>COMPOUND</b>	<b>CONTENT (%)</b>	<b>SPECIFICATION</b>
17.180	Z – ROSE OXIDE	1.04	0.7 – 1.5
18.167	E – ROSE OXIDE	0.36	0.3 – 0.6
19.703	MENTHONE	2.15	MAX 2.1
20.347	ISO MENTHONE	4.00	4 - 8
16.540	LINALOOL	3.09	3 – 8.5
33.554	GUAIA-6,9-DIENE	0.12	MAX 0.5
27.365	CITRONELLYL FORMATE	6.91	4 - 8
28.625	GERANYL FORMATE	2.11	2 - 7
24.738	CITRONELLOL	30.06	25 – 36
26.259	GERANIOL	12.78	10 - 18
37.063	GERANYL BUTYRATE	0.89	0.7 - 2

File :C:\msdchem\1\data\2024\05-20-24\Geranium Oil Lot# 73634.D  
Operator : DMW  
Acquired : 20 May 2024 11:37 using AcqMethod METHOD\_7.M  
Instrument : GCMS  
Sample Name: Geranium Oil  
Misc Info : 12943  
Vial Number: 13



Area Percent Report

Data Path : C:\msdchem\1\data\2024\05-20-24  
 Data File : \Geranium Oil Lot# 12943  
 Acq On : 20 May 2024 11:37  
 Operator : DMW  
 Sample : Geranium Oil  
 Misc : 12943  
 ALS Vial : 13 Sample Multiplier: 1

Integration Parameters: autoint1.e  
 Integrator: ChemStation

Method : C:\msdchem\1\methods\METHOD\_7.M  
 Title : Eoil Qualitative

Signal : TIC: Geranium Oil Lot# 12943\data.ms

peak #	R.T. min	first scan	max scan	last scan	PK TY	peak height	corr. area	corr. % max.	% of total
1	7.998	835	859	877	BB	69069	2049074	1.34%	0.402%
2	9.640	1134	1146	1158	BB 5	4752	128144	0.08%	0.025%
3	10.572	1290	1309	1316	PV 6	10811	387940	0.25%	0.076%
4	10.623	1316	1318	1328	VB 5	5542	110663	0.07%	0.022%
5	11.161	1389	1412	1426	BB 4	7557	234095	0.15%	0.046%
6	12.208	1577	1595	1608	BB	12060	397516	0.26%	0.078%
7	12.421	1614	1632	1643	BV 8	25278	929154	0.61%	0.182%
8	13.012	1720	1735	1748	BB 5	5748	173435	0.11%	0.034%
9	13.577	1815	1834	1845	BB 4	7555	259259	0.17%	0.051%
10	14.894	2052	2064	2085	BB 8	13487	542146	0.35%	0.106%
11	15.824	2207	2227	2241	BB 8	7447	331531	0.22%	0.065%
12	16.540	2330	2352	2386	BV 2	389784	15755375	10.29%	3.093%
13	16.843	2391	2405	2408	PV 5	3750	92791	0.06%	0.018%
14	17.180	2443	2464	2490	BV	126764	5290909	3.45%	1.039%
15	18.167	2618	2636	2659	BV 2	44448	1829135	1.19%	0.359%
16	19.188	2792	2815	2827	BV 6	4249	133891	0.09%	0.026%
17	19.703	2886	2905	2923	BV 4	242161	11035164	7.21%	2.166%
18	19.824	2923	2926	2945	VB 5	10974	395830	0.26%	0.078%
19	20.173	2975	2987	3000	BV 3	3656	117280	0.08%	0.023%
20	20.347	3000	3017	3050	VV 3	444339	20278419	13.24%	3.980%
21	21.555	3211	3229	3248	BV 7	10749	463376	0.30%	0.091%
22	22.052	3286	3315	3337	BV 6	27959	1280539	0.84%	0.251%
23	24.738	3735	3785	3829	BV 3	2437227	153158459	100.00%	30.062%
24	24.998	3829	3830	3832	VV 2	4879	49332	0.03%	0.010%
25	25.018	3832	3834	3852	VV 7	4445	142193	0.09%	0.028%
26	25.380	3877	3897	3912	VV 7	36924	1629468	1.06%	0.320%
27	26.030	3992	4011	4025	PV 8	4505	197778	0.13%	0.039%
28	26.259	4025	4051	4087	PV	1440170	65125607	42.52%	12.783%
29	26.478	4087	4089	4104	VV 7	4614	179089	0.12%	0.035%
30	26.776	4131	4141	4153	PV 7	4626	170305	0.11%	0.033%
31	27.051	4174	4189	4211	PV 2	64936	2535977	1.66%	0.498%
32	27.365	4221	4244	4264	BV	949163	35205617	22.99%	6.910%
33	27.608	4277	4286	4301	BV 7	6209	227444	0.15%	0.045%
34	28.625	4446	4464	4479	PV 2	327191	10772159	7.03%	2.114%
35	29.978	4691	4701	4718	PV 6	7657	260148	0.17%	0.051%
36	30.480	4767	4788	4802	BV 6	31079	1124396	0.73%	0.221%
37	30.727	4820	4831	4847	PV 3	53716	1602852	1.05%	0.315%
38	31.270	4917	4926	4936	BV 5	7607	241836	0.16%	0.047%
39	31.438	4941	4956	4970	VV 3	108616	3441306	2.25%	0.675%
40	31.752	4991	5011	5019	BV 2	227376	7102751	4.64%	1.394%

41	31.831	5019	5024	5045	VV	4	68755	2064641	1.35%	0.405%
42	32.046	5050	5062	5070	VV	8	12300	401892	0.26%	0.079%
43	32.175	5077	5085	5098	VV	2	6974	219906	0.14%	0.043%
44	32.526	5137	5146	5153	VV	5	5372	152051	0.10%	0.030%
45	32.616	5153	5162	5175	VV	6	12477	364361	0.24%	0.072%
46	32.927	5196	5216	5233	BV	3	275173	8377320	5.47%	1.644%
47	33.145	5244	5254	5262	VV	4	7412	209101	0.14%	0.041%
48	33.253	5262	5273	5284	VV	3	27348	843347	0.55%	0.166%
49	33.417	5294	5302	5309	VV	6	5317	135614	0.09%	0.027%
50	33.554	5309	5325	5343	VV	7	17692	642096	0.42%	0.126%
51	33.761	5343	5362	5373	VV	5	118830	5563565	3.63%	1.092%
52	33.885	5373	5383	5398	VV	4	92702	3693611	2.41%	0.725%
53	34.017	5398	5406	5417	VV	3	74950	2345953	1.53%	0.460%
54	34.244	5430	5446	5456	VV	7	44472	1399755	0.91%	0.275%
55	34.319	5456	5459	5468	VV	5	5193	140083	0.09%	0.027%
56	34.418	5468	5477	5491	VV	6	11718	377001	0.25%	0.074%
57	34.652	5497	5517	5521	BV	5	64804	2281789	1.49%	0.448%
58	34.707	5521	5527	5542	VV	6	117500	4348791	2.84%	0.854%
59	34.863	5542	5554	5563	VV	2	240029	7108118	4.64%	1.395%
60	34.938	5563	5567	5574	VV	6	41831	1208662	0.79%	0.237%
61	35.007	5574	5580	5588	VV	5	38532	1197242	0.78%	0.235%
62	35.177	5601	5609	5616	VV	4	26245	814520	0.53%	0.160%
63	35.304	5616	5631	5643	VV	9	92272	5060911	3.30%	0.993%
64	35.425	5643	5653	5664	VV	4	77342	2738988	1.79%	0.538%
65	35.528	5664	5671	5678	VV	5	8215	214767	0.14%	0.042%
66	35.654	5678	5692	5703	VV	8	22259	931486	0.61%	0.183%
67	35.820	5709	5722	5733	VV	3	91395	2673917	1.75%	0.525%
68	35.905	5733	5736	5747	VV	4	6413	183211	0.12%	0.036%
69	36.081	5754	5767	5782	VV	3	408601	12741711	8.32%	2.501%
70	36.203	5782	5789	5800	VV	3	140082	3806486	2.49%	0.747%
71	36.320	5800	5809	5816	VV	4	31523	892884	0.58%	0.175%
72	36.391	5816	5821	5827	VV	4	12603	322593	0.21%	0.063%
73	36.475	5827	5836	5847	VV	6	40811	1293285	0.84%	0.254%
74	36.606	5847	5859	5864	VV	3	23802	794034	0.52%	0.156%
75	36.676	5864	5871	5883	VV	4	80245	2327888	1.52%	0.457%
76	36.786	5883	5890	5892	VV	5	5036	101699	0.07%	0.020%
77	36.805	5892	5894	5898	VV	4	4992	83880	0.05%	0.016%
78	36.876	5898	5906	5914	VV	6	6000	210041	0.14%	0.041%
79	37.063	5928	5939	5960	VV	3	167245	4528284	2.96%	0.889%
80	37.242	5960	5970	5978	VV	6	12556	380719	0.25%	0.075%
81	37.326	5978	5985	5992	VV	6	7133	191562	0.13%	0.038%
82	37.477	6003	6011	6021	VV	6	64887	1574234	1.03%	0.309%
83	37.627	6021	6037	6055	VV		311358	8049932	5.26%	1.580%
84	37.775	6055	6063	6076	VV		23104	917703	0.60%	0.180%
85	37.895	6076	6084	6087	VV	8	6033	183351	0.12%	0.036%
86	37.951	6087	6094	6103	VV	6	22461	773712	0.51%	0.152%
87	38.030	6103	6108	6114	VV	7	15793	450982	0.29%	0.089%
88	38.097	6114	6119	6124	VV	7	12219	312987	0.20%	0.061%
89	38.190	6128	6136	6141	VV	2	67745	1502889	0.98%	0.295%
90	38.274	6141	6150	6166	VV		2003748	39471332	25.77%	7.748%
91	38.396	6166	6172	6177	VV	2	63496	1260102	0.82%	0.247%
92	38.450	6177	6181	6186	VV	3	49391	1000655	0.65%	0.196%
93	38.512	6186	6192	6201	VV	3	85132	2136787	1.40%	0.419%
94	38.635	6201	6214	6222	VV	4	112989	4060050	2.65%	0.797%
95	38.721	6222	6229	6232	VV	2	187969	3519624	2.30%	0.691%
96	38.758	6232	6235	6244	VV	2	178762	3876062	2.53%	0.761%

97	38.834	6244	6248	6252	VV 6	23233	511247	0.33%	0.100%
98	38.884	6252	6257	6264	VV	121162	1969192	1.29%	0.387%
99	38.991	6272	6276	6280	VV 6	8472	200574	0.13%	0.039%
100	39.042	6280	6285	6287	VV	11358	201443	0.13%	0.040%
101	39.110	6287	6297	6303	VV 2	43981	906610	0.59%	0.178%
102	39.305	6323	6331	6341	VV	379997	5200943	3.40%	1.021%
103	39.479	6353	6361	6371	VV 3	51319	1110861	0.73%	0.218%
104	39.552	6371	6374	6386	VV 7	5697	164737	0.11%	0.032%
105	39.838	6418	6424	6432	VV	20282	330406	0.22%	0.065%
106	40.046	6455	6460	6465	VV 5	4318	70644	0.05%	0.014%
107	40.393	6512	6521	6530	PV 3	18786	310312	0.20%	0.061%
108	40.658	6561	6567	6572	VV 2	26094	371001	0.24%	0.073%
109	40.814	6587	6594	6599	PV	12476	190259	0.12%	0.037%
110	40.853	6599	6601	6610	VV 6	6212	90830	0.06%	0.018%

Sum of corrected areas: 509469609

METHOD\_7.M Tue Dec 31 15:45:42 2024