



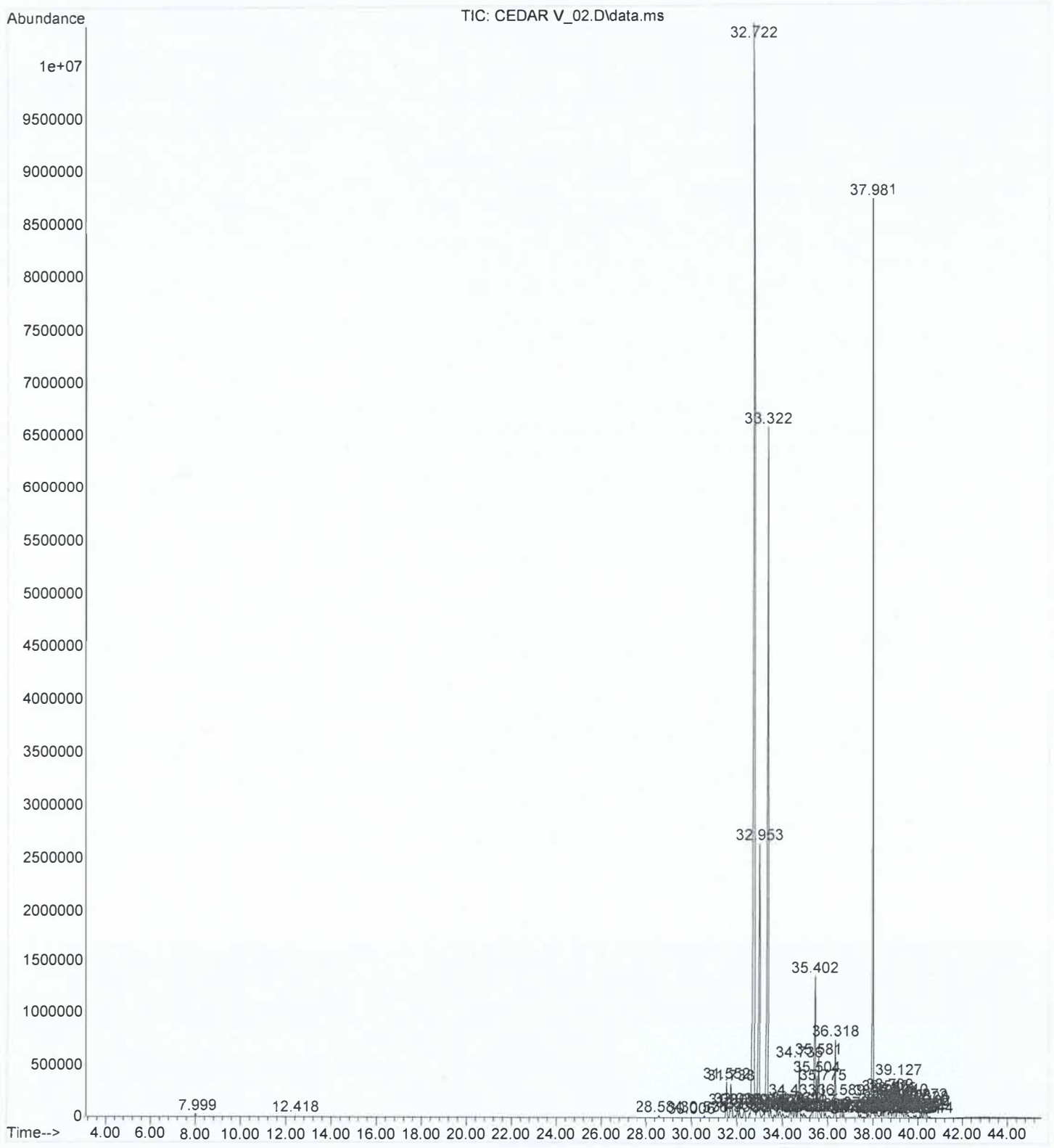
CEDARWOOD VIRGINIANA OIL

CHEMICAL COMPOSITION (GC-MS)

LOT NO. 12943

PEAK RT	COMPOUND	CONTENT (%)	SPECIFICATION
32.722	ALPHA CEDRENE + BETA FUNEBRENE	33.58	20 – 35 %
32.953	BETA CEDFRENE + BETA CARYOPHYLLENE	7.30	4 - 8 %
33.322	THUJOSPENE	17.23	10 – 26 %
35.581	CUPARENE	1.43	1 – 7 %
37.981	CEDROL	19.60	16 - 26 %

File :C:\msdchem\1\data\2024\06-24-24\CEDAR V_02.D
Operator : DMW
Acquired : 24 Jun 2024 11:29 using AcqMethod METHOD_7.M
Instrument : GCMS
Sample Name: CEDARWOOD VIRGINIANA
Misc Info : 12943
Vial Number: 2



Area Percent Report

Data Path : C:\msdchem\1\data\2024\06-24-24\
 Data File : CEDAR V_02.D
 Acq On : 24 Jun 2024 11:29
 Operator : DMW
 Sample : CEDARWOOD VIRGINIANA
 Misc : 12943
 ALS Vial : 2 Sample Multiplier: 1

Integration Parameters: autoint1.e
 Integrator: ChemStation

Method : C:\msdchem\1\methods\METHOD_7.M
 Title : Eoil Qualitative

Signal : TIC: CEDAR V_02.D\data.ms

peak #	R.T. min	first scan	max scan	last scan	PK TY	peak height	corr. area	corr. % max.	% of total
1	7.999	847	859	872	BB 2	30681	869419	0.20%	0.067%
2	12.418	1620	1632	1642	BB 4	5577	163708	0.04%	0.013%
3	28.584	4443	4457	4468	BB 7	21932	714072	0.16%	0.055%
4	30.006	4696	4705	4714	BB 4	4686	145365	0.03%	0.011%
5	30.576	4796	4805	4817	VV 6	18746	557477	0.13%	0.043%
6	31.552	4959	4976	4995	BV 2	335874	10887797	2.50%	0.839%
7	31.738	4995	5008	5018	VV 2	317662	10909690	2.50%	0.841%
8	31.803	5018	5020	5034	VV 2	88672	2169193	0.50%	0.167%
9	31.936	5034	5043	5050	PV 8	23471	718444	0.16%	0.055%
10	32.035	5050	5060	5069	VV 2	96604	3101216	0.71%	0.239%
11	32.134	5069	5077	5088	VV 2	61022	1906864	0.44%	0.147%
12	32.330	5098	5112	5141	VV 9	90037	4098818	0.94%	0.316%
13	32.569	5141	5153	5157	VV 6	47165	1321990	0.30%	0.102%
14	32.722	5157	5180	5202	VV	10299483	435649105	100.00%	33.578%
15	32.953	5202	5220	5245	VV 2	2619348	94743639	21.75%	7.302%
16	33.196	5245	5263	5268	VV 6	47854	2321006	0.53%	0.179%
17	33.322	5268	5285	5303	VV	6547448	223529425	51.31%	17.228%
18	33.480	5303	5313	5331	VV 4	84936	3033871	0.70%	0.234%
19	33.650	5331	5342	5349	VV 5	30431	1054896	0.24%	0.081%
20	33.704	5349	5352	5354	VV 4	16976	276662	0.06%	0.021%
21	33.777	5354	5365	5372	VV 4	85876	2922513	0.67%	0.225%
22	33.892	5372	5385	5398	VV 4	61332	3261115	0.75%	0.251%
23	34.019	5398	5407	5423	VV 9	40963	1829632	0.42%	0.141%
24	34.184	5423	5436	5447	VV 9	20932	1024516	0.24%	0.079%
25	34.346	5447	5464	5471	VV 5	83347	3324033	0.76%	0.256%
26	34.433	5471	5479	5490	VV 2	181445	5501074	1.26%	0.424%
27	34.562	5490	5502	5511	VV 6	104437	3582900	0.82%	0.276%
28	34.666	5511	5520	5521	VV 4	53830	1142550	0.26%	0.088%
29	34.736	5521	5532	5544	VV 2	536502	17147794	3.94%	1.322%
30	34.837	5544	5550	5559	VV 4	37927	1270686	0.29%	0.098%
31	34.934	5559	5567	5576	VV 7	43159	1573629	0.36%	0.121%
32	35.012	5576	5580	5592	VV 6	23985	704106	0.16%	0.054%
33	35.229	5601	5618	5621	VV 7	25197	788730	0.18%	0.061%
34	35.307	5621	5632	5637	VV	84552	2849792	0.65%	0.220%
35	35.402	5637	5649	5659	VV 4	1344627	46038598	10.57%	3.548%
36	35.504	5659	5666	5673	VV 3	396158	11962576	2.75%	0.922%
37	35.581	5673	5680	5702	VV	565792	18499750	4.25%	1.426%
38	35.775	5702	5714	5727	VV 2	321709	10931917	2.51%	0.843%
39	35.890	5727	5734	5752	VV 6	47898	1815324	0.42%	0.140%
40	36.041	5752	5760	5776	VV 6	22188	1190843	0.27%	0.092%

41	36.318	5790	5809	5826	VV	732482	20841939	4.78%	1.606%
42	36.589	5842	5856	5867	PV 3	180854	5334416	1.22%	0.411%
43	36.692	5867	5874	5886	VV 5	35684	1007780	0.23%	0.078%
44	37.135	5942	5951	5956	VV 8	6628	237943	0.05%	0.018%
45	37.182	5956	5960	5970	VV 4	7242	159978	0.04%	0.012%
46	37.311	5970	5982	5984	PV 5	16472	371985	0.09%	0.029%
47	37.368	5984	5992	6001	VV 5	40302	1257180	0.29%	0.097%
48	37.458	6001	6008	6017	VV 6	36702	1002559	0.23%	0.077%
49	37.547	6017	6023	6028	VV 4	9639	247654	0.06%	0.019%
50	37.600	6028	6033	6039	VV 6	13238	338430	0.08%	0.026%
51	37.733	6047	6056	6063	VV 3	60708	1455051	0.33%	0.112%
52	37.811	6063	6069	6083	VV 9	40054	1586260	0.36%	0.122%
53	37.981	6083	6099	6115	VV	8622286	254245084	58.36%	19.596%
54	38.083	6115	6117	6122	VV 6	27440	623942	0.14%	0.048%
55	38.133	6122	6126	6127	VV 4	27440	439320	0.10%	0.034%
56	38.182	6127	6134	6142	VV 2	174457	4012093	0.92%	0.309%
57	38.241	6142	6145	6151	VV 7	23031	650886	0.15%	0.050%
58	38.333	6151	6161	6168	VV 10	42492	1460206	0.34%	0.113%
59	38.404	6168	6173	6183	VV 2	90870	2397708	0.55%	0.185%
60	38.493	6183	6189	6192	VV 3	63984	1407935	0.32%	0.109%
61	38.546	6192	6198	6203	VV 2	218141	4459873	1.02%	0.344%
62	38.630	6203	6213	6219	VV 8	108994	3894904	0.89%	0.300%
63	38.690	6219	6223	6226	VV 5	52213	1036970	0.24%	0.080%
64	38.739	6226	6232	6244	VV 3	233026	6046524	1.39%	0.466%
65	38.875	6249	6255	6262	VV 2	197376	4084165	0.94%	0.315%
66	38.943	6262	6267	6271	VV 4	150855	3154778	0.72%	0.243%
67	38.973	6271	6273	6283	VV 5	125443	3040777	0.70%	0.234%
68	39.127	6283	6300	6307	VV 2	365554	10191328	2.34%	0.785%
69	39.215	6307	6315	6325	VV 10	133643	5360448	1.23%	0.413%
70	39.295	6325	6329	6343	VV 4	82327	2499843	0.57%	0.193%
71	39.410	6343	6349	6356	VV 2	187177	3639055	0.84%	0.280%
72	39.467	6356	6359	6361	VV 4	35560	566556	0.13%	0.044%
73	39.508	6361	6366	6373	VV 2	126425	2742231	0.63%	0.211%
74	39.576	6373	6378	6390	VV 7	28173	913220	0.21%	0.070%
75	39.691	6394	6398	6400	VV 4	10014	154847	0.04%	0.012%
76	39.709	6400	6401	6407	VV 4	10680	227100	0.05%	0.018%
77	39.818	6411	6420	6424	VV 4	27785	550165	0.13%	0.042%
78	39.855	6424	6427	6432	VV 6	17031	364314	0.08%	0.028%
79	39.909	6432	6436	6446	VV 6	32667	731714	0.17%	0.056%
80	40.031	6450	6458	6462	VV 10	8879	235529	0.05%	0.018%
81	40.092	6462	6468	6476	VV 3	44995	782705	0.18%	0.060%
82	40.172	6476	6482	6493	VV 3	47061	1073250	0.25%	0.083%
83	40.272	6493	6500	6504	VV 2	134353	2133680	0.49%	0.164%
84	40.328	6504	6509	6514	VV 2	113465	2543029	0.58%	0.196%
85	40.369	6514	6517	6519	VV 2	48534	769024	0.18%	0.059%
86	40.402	6519	6522	6528	VV 2	74748	1334143	0.31%	0.103%
87	40.544	6543	6547	6559	VV 6	15744	298103	0.07%	0.023%

Sum of corrected areas: 1297441358