



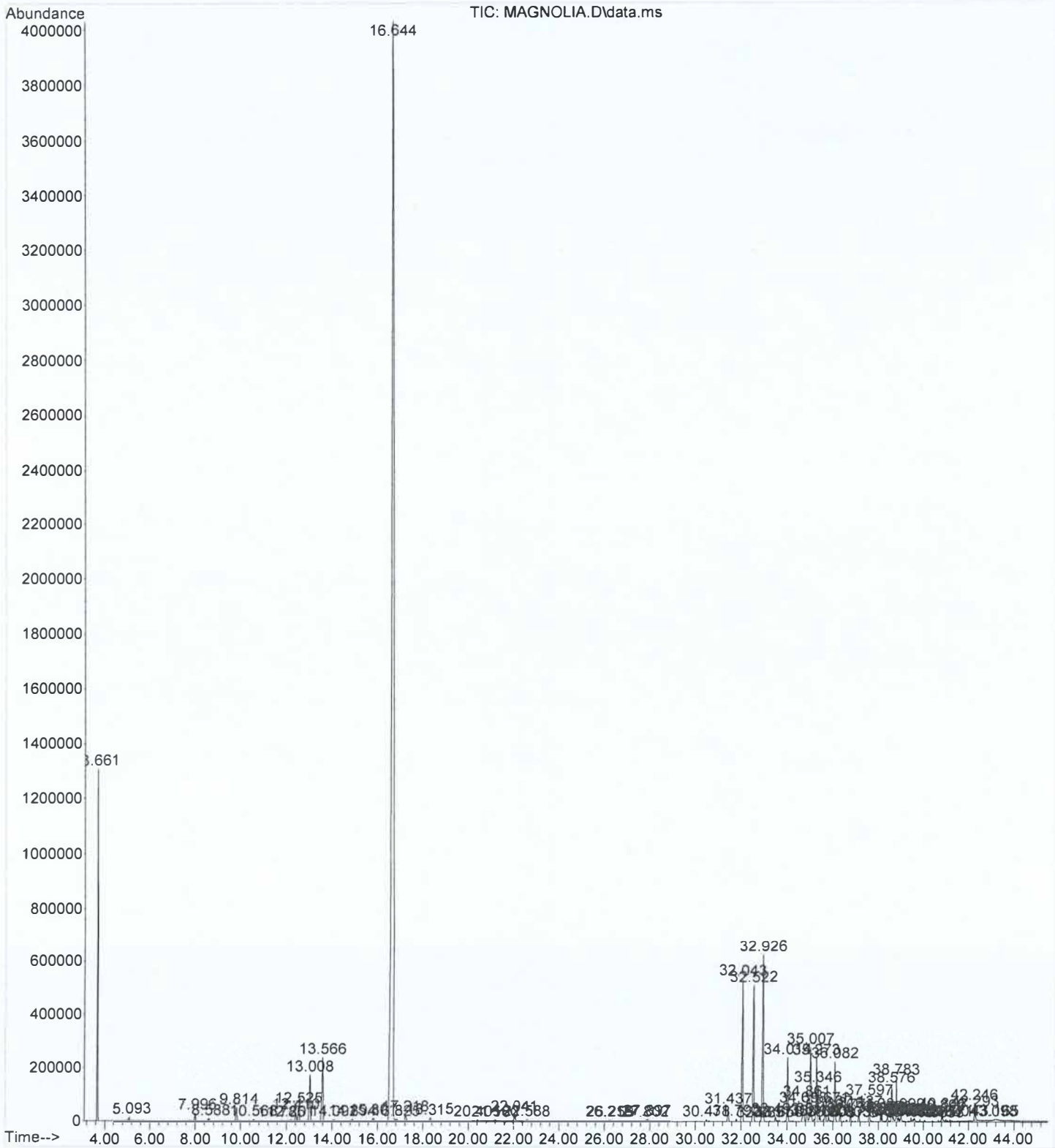
MAGNOLIA FLOWER OIL

CHEMICAL COMPOSITION (GC-MS)

LOT NO. 13031

PEAK RT	COMPOUND	CONTENT (%)	SPECIFICATION
12.525	TRANS B-OCIMENE	0.49	
13.008	CIS B-OCIMENE	1.47	
16.644	LINALOOL	61.06	
32.522	METHYLEUGENOL	3.41	
32.926	B-CARYOPHYLLENE	40.18	

File :C:\msdchem\1\data\2024\12-16-24\MAGNOLIA.D
Operator : SS
Acquired : 16 Dec 2024 14:49 using AcqMethod METHOD_7.M
Instrument : GCMS
Sample Name: MAGNOLIA FLOWER
Misc Info : 13031
Vial Number: 4



Area Percent Report

Data Path : C:\msdchem\1\data\2024\12-16-24\
Data File : MAGNOLIA.D
Acq On : 16 Dec 2024 14:49
Operator : SS
Sample : MAGNOLIA FLOWER
Misc : 13031
ALS Vial : 4 Sample Multiplier: 1

Integration Parameters: autoint1.e
Integrator: ChemStation

Method : C:\msdchem\1\methods\METHOD_7.M
Title : Eoil Qualitative

Signal : TIC: MAGNOLIA.D\data.ms

peak #	R.T. min	first scan	max scan	last scan	PK TY	peak height	corr. area	corr. % max.	% of total
1	3.661	92	101	129	BB	1272183	21255313	8.34%	5.090%
2	5.093	328	352	361	BV 2	13044	504581	0.20%	0.121%
3	7.996	847	859	872	BB 3	29672	842822	0.33%	0.202%
4	8.588	950	962	972	BB 4	9052	249142	0.10%	0.060%
5	9.814	1164	1177	1191	BB 2	49185	1615377	0.63%	0.387%
6	10.568	1295	1308	1318	BB 4	5922	187013	0.07%	0.045%
7	11.785	1506	1521	1532	BB 4	3303	109228	0.04%	0.026%
8	12.201	1577	1594	1606	BB 3	4367	146865	0.06%	0.035%
9	12.410	1612	1630	1641	BV 4	30388	1064819	0.42%	0.255%
10	12.525	1641	1650	1667	VB 5	53794	2042833	0.80%	0.489%
11	13.008	1713	1735	1752	BB 3	172054	6122253	2.40%	1.466%
12	13.566	1810	1832	1850	BB 2	235828	8660685	3.40%	2.074%
13	14.092	1907	1924	1935	BB 5	6213	207726	0.08%	0.050%
14	14.894	2047	2064	2077	BB 7	7643	288866	0.11%	0.069%
15	15.801	2204	2223	2240	BB 8	11833	496517	0.19%	0.119%
16	16.644	2332	2370	2393	VV 2	4028366	254970933	100.00%	61.059%
17	16.825	2393	2402	2425	VV 6	6413	319747	0.13%	0.077%
18	17.218	2456	2471	2500	BV 2	23672	1031081	0.40%	0.247%
19	18.315	2645	2662	2684	BB 4	13297	516065	0.20%	0.124%
20	20.405	3011	3028	3044	BB 3	4507	163430	0.06%	0.039%
21	21.180	3149	3163	3172	VV 6	4139	154744	0.06%	0.037%
22	22.041	3297	3314	3332	BB 6	23649	1042417	0.41%	0.250%
23	22.588	3391	3409	3422	BB 5	7203	275424	0.11%	0.066%
24	26.216	4024	4043	4049	BV 6	6290	240587	0.09%	0.058%
25	26.259	4049	4051	4065	VV 4	5467	164086	0.06%	0.039%
26	27.802	4310	4320	4329	VV 4	6593	216970	0.09%	0.052%
27	27.897	4329	4337	4352	VB 7	9370	388456	0.15%	0.093%
28	30.478	4767	4788	4797	BV 5	7015	196971	0.08%	0.047%
29	31.437	4939	4956	4968	BB 4	53758	1641293	0.64%	0.393%
30	31.792	5003	5018	5028	BV 4	9478	237432	0.09%	0.057%
31	32.043	5043	5062	5078	BV 2	527522	15725641	6.17%	3.766%
32	32.522	5124	5145	5174	BV 2	506779	14241677	5.59%	3.411%
33	32.837	5179	5200	5202	BV 4	3362	67231	0.03%	0.016%
34	32.926	5202	5216	5240	VV 3	621311	19199200	7.53%	4.598%
35	33.493	5302	5315	5324	VV 4	16515	475934	0.19%	0.114%
36	33.571	5324	5328	5335	VV 5	4559	112568	0.04%	0.027%
37	33.656	5335	5343	5359	VB 3	5180	150877	0.06%	0.036%
38	34.014	5388	5406	5419	VV	239549	6981993	2.74%	1.672%
39	34.698	5502	5526	5543	BV 7	56884	2484338	0.97%	0.595%
40	34.861	5543	5554	5563	VV 3	81457	2340099	0.92%	0.560%

41	35.007	5563	5579	5600	VV 5	273736	9378873	3.68%	2.246%
42	35.173	5600	5609	5613	VV 7	9193	240738	0.09%	0.058%
43	35.273	5613	5626	5633	VV 4	238120	7157091	2.81%	1.714%
44	35.346	5633	5639	5648	VV	135058	3646666	1.43%	0.873%
45	35.432	5648	5654	5670	VV 4	16481	463655	0.18%	0.111%
46	35.603	5670	5684	5686	VV 5	8578	224410	0.09%	0.054%
47	35.671	5686	5695	5706	VV 4	57204	1625539	0.64%	0.389%
48	35.814	5706	5721	5731	VV 4	18158	533633	0.21%	0.128%
49	35.908	5731	5737	5747	VV 4	5266	140438	0.06%	0.034%
50	36.082	5755	5767	5787	VV 3	221891	6135043	2.41%	1.469%
51	36.316	5787	5808	5824	PV 3	38927	1035396	0.41%	0.248%
52	36.603	5844	5859	5872	PB 6	6312	185608	0.07%	0.044%
53	36.775	5875	5888	5898	BV 4	32918	823848	0.32%	0.197%
54	37.137	5934	5952	5965	BV 2	44665	1037857	0.41%	0.249%
55	37.597	6015	6032	6042	PV 3	85467	2003787	0.79%	0.480%
56	37.673	6042	6045	6054	VV 5	4265	103925	0.04%	0.025%
57	38.094	6109	6119	6125	VV 3	19539	421175	0.17%	0.101%
58	38.158	6125	6130	6137	VV 4	23874	480360	0.19%	0.115%
59	38.354	6159	6165	6167	VV 5	6533	115815	0.05%	0.028%
60	38.396	6167	6172	6180	VV 3	24951	527114	0.21%	0.126%
61	38.576	6190	6203	6213	VV 2	132472	4044618	1.59%	0.969%
62	38.656	6213	6217	6226	VV 9	18798	492758	0.19%	0.118%
63	38.783	6226	6239	6247	VV 2	159621	3089629	1.21%	0.740%
64	38.835	6247	6248	6253	VV 5	11607	179998	0.07%	0.043%
65	38.886	6253	6257	6262	VV 5	16463	347799	0.14%	0.083%
66	38.946	6262	6268	6271	VV 4	10474	188315	0.07%	0.045%
67	38.999	6271	6277	6290	VV 5	33924	806500	0.32%	0.193%
68	39.439	6349	6354	6360	VV 3	16943	278092	0.11%	0.067%
69	39.513	6360	6367	6370	VV 5	8148	176175	0.07%	0.042%
70	39.552	6370	6374	6377	VV 6	11436	198289	0.08%	0.047%
71	39.592	6377	6381	6392	VV 6	13691	377067	0.15%	0.090%
72	39.832	6417	6423	6428	VV 4	9093	151637	0.06%	0.036%
73	40.056	6451	6462	6466	PV 6	6106	146299	0.06%	0.035%
74	40.383	6513	6519	6522	PV 4	3956	57298	0.02%	0.014%
75	40.654	6552	6566	6571	VV	6718	106738	0.04%	0.026%
76	40.753	6577	6584	6586	PV 3	3758	50700	0.02%	0.012%
77	40.802	6586	6592	6596	VV 3	29153	463651	0.18%	0.111%
78	40.846	6596	6600	6607	VV 2	35698	586957	0.23%	0.141%
79	40.990	6620	6625	6629	VV 4	8550	141685	0.06%	0.034%
80	41.171	6651	6657	6664	PV 5	6382	108181	0.04%	0.026%
81	42.246	6836	6845	6849	VV 3	64688	1051303	0.41%	0.252%
82	42.293	6849	6853	6869	VV 2	41542	1052587	0.41%	0.252%
83	43.098	6988	6994	7000	PV 7	1932	45832	0.02%	0.011%
84	43.165	7000	7005	7011	VV 7	1920	26344	0.01%	0.006%

Sum of corrected areas: 417582657