

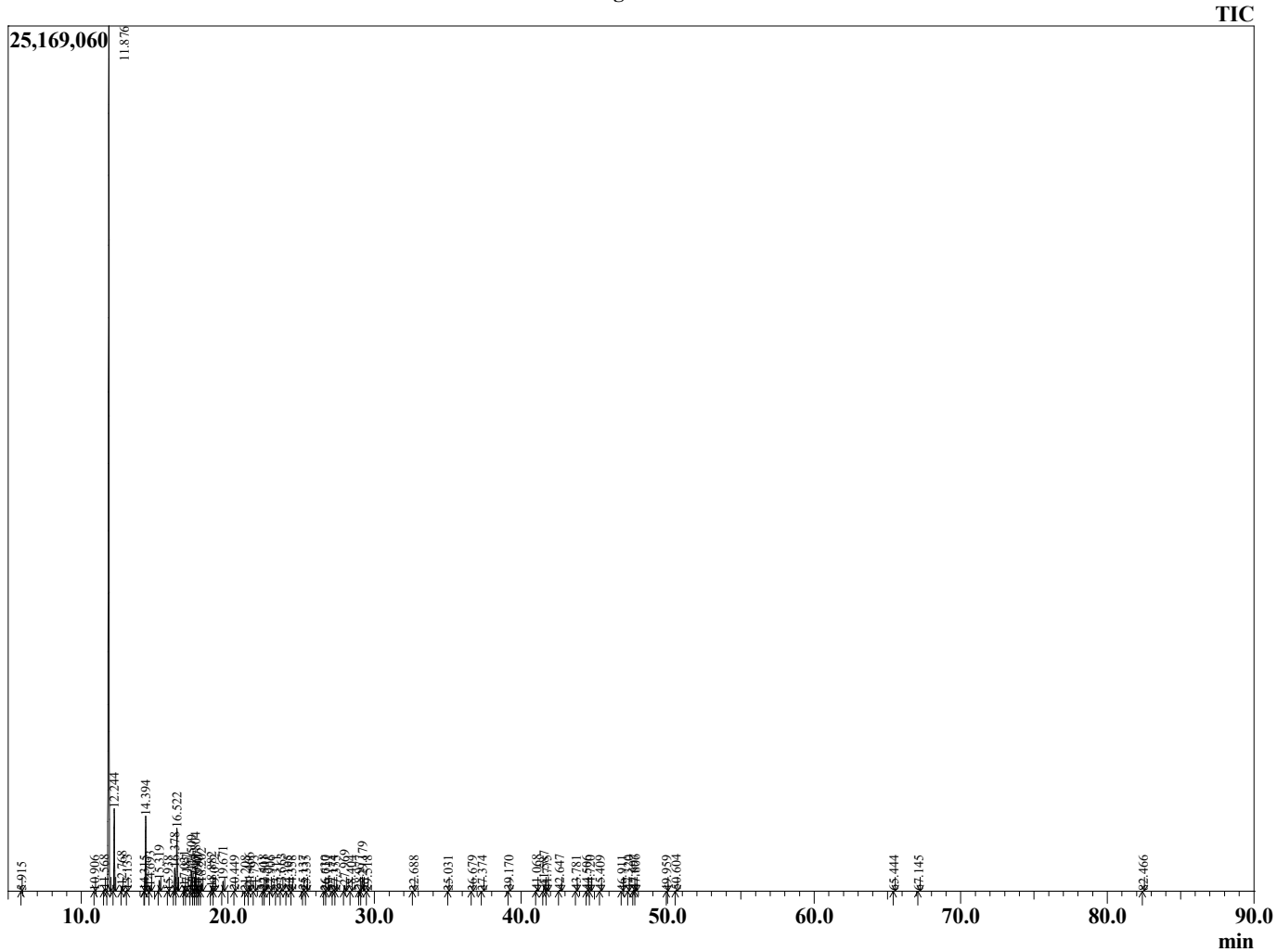
Sample Information

Analyzed by : JS
 Analyzed : 02/27/2023 1:07:25 AM
 Sample Type : Essential Oil
 Sample Name : Frankincense Boswellia Serrata
 Injection Volume : 0.10 µL
 Lot Number : 12731
 Instrument ID : GC-4

Peak Report TIC

R.Time	Name	Area%
3.856	2,4-Hexadiene isomer	0.01
5.915	Toluene	0.01
10.906	Carene isomer	0.02
11.568	Hashishene	0.11
11.876	alpha-Thujene	70.55
12.244	alpha-Pinene	5.47
12.768	Thuja-2,4(10)diene	0.36
13.133	Camphene	0.07
14.315	meta-Cymene	0.01
14.394	Sabinene	5.35
14.693	beta-Pinene	0.35
15.319	Myrcene	0.83
15.938	delta-2-Carene	0.01
16.378	alpha-Phellandrene	1.83
16.522	delta-3-Carene	4.80
17.031	alpha-Terpinene	0.39
17.187	ortho-Cymene	0.07
17.509	para-Cymene	1.63
17.634	Unidentified	0.14
17.804	Limonene	1.80
17.907	beta-Phellandrene	0.42
17.980	1,8-Cineole	0.02
18.202	cis-beta-Ocimene	0.60
18.882	trans-beta-Ocimene	0.30
19.072	Unidentified	0.04
19.671	gamma-Terpinene	0.79
20.449	trans-4-Thujanol	0.03
21.208	Isoterpinolene	0.01
21.466	Terpinolene	0.29
21.793	para-Cymenene	0.02
22.418	Linalool	0.07
22.501	trans-Sabinene hydrate	0.02
22.906	alpha-Thujone	0.01
23.311	Unidentified	0.02
23.663	beta-Thujone	0.15
24.105	cis-para-Menth-2-en-1-ol	0.03
24.358	allo-Ocimene	0.04
25.137	trans-Sabinol	0.02
25.335	Unidentified	0.01
26.630	Unidentified	0.01
26.717	para-Mentha-1,5-dien-8-ol	0.02
27.174	Unidentified	0.04
27.355	Unidentified	0.01
27.969	Terpinen-4-ol	0.55
28.404	para-Cymen-8-ol	0.01
28.977	alpha-Terpineol	0.03
29.179	Estragole	1.29
29.518	alpha-Phellandrene epoxide	0.01
32.688	Linalyl acetate	0.02
35.031	Bornyl acetate	0.01
36.679	Unidentified	0.01
37.374	Unidentified	0.02
39.170	alpha-Terpinyl acetate	0.03
41.068	alpha-Copaene	0.10
41.587	beta-Bourbonene	0.50
41.775	alpha-Bourbonene	0.04
42.647	Unidentified	0.11
43.781	beta-Ylangene	0.03
44.506	beta-Copaene	0.04
44.720	trans-alpha-Bergamotene	0.03
45.409	Isogermaacrene D	0.02
46.911	Unidentified	0.01

Chromatogram 98401-41



This report is provided as a courtesy to our customers for their evaluation only.

R.Time	Name	Area%
47.320	trans-Cadina-1(6),4-diene	0.02
47.697	Germacrene D	0.10
47.806	gamma-Himachelene	0.09
49.959	delta-Cadinene	0.01
50.604	Kessane	0.09
65.444	Phellandrene dimer	0.02
67.145	Unidentified	0.01
82.466	Serratol	0.01
		100.00