

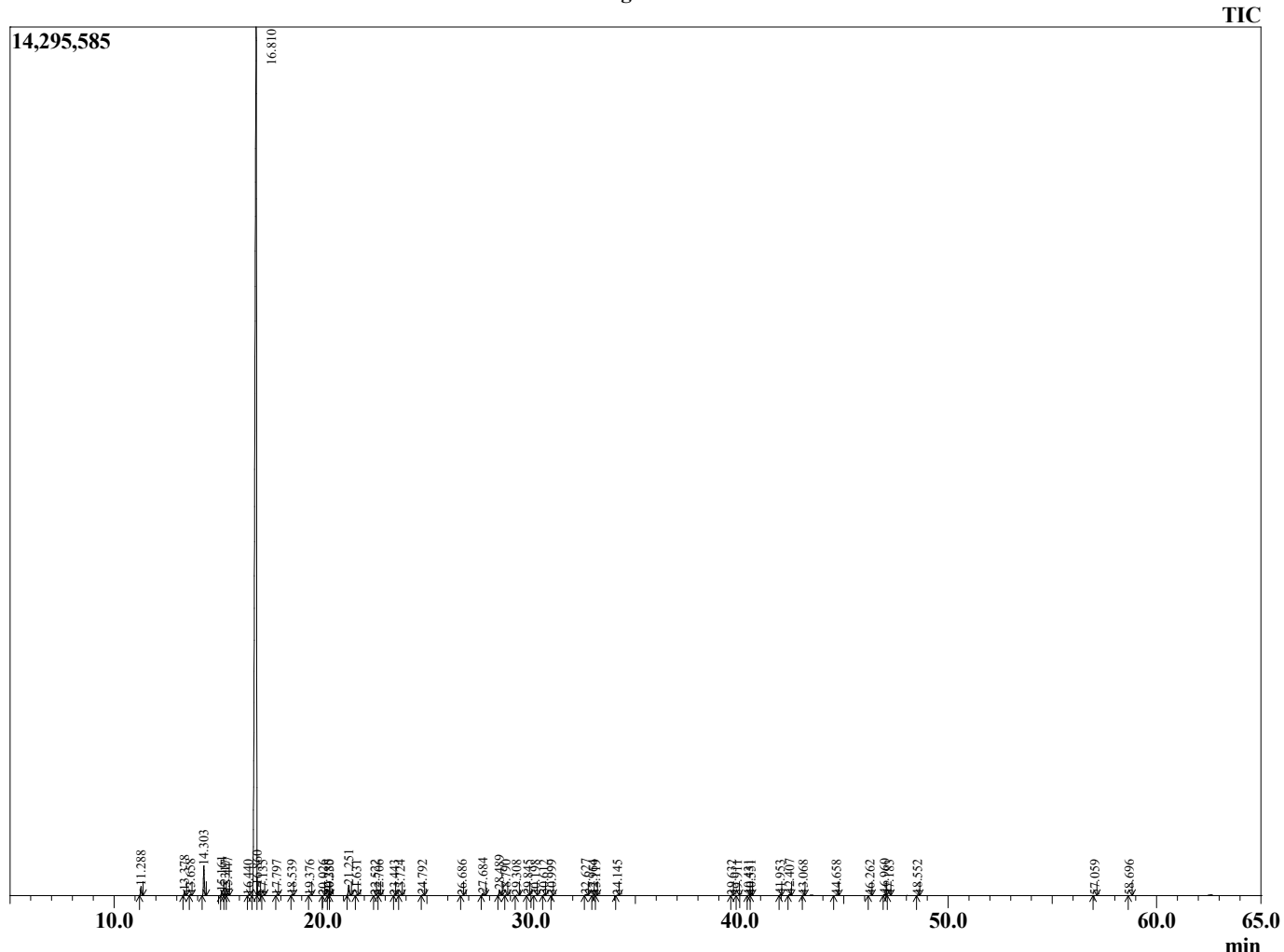
Sample Information

Analyzed by : KS
 Analyzed : 9/28/2023 4:56:58 PM
 Sample Type : Essential Oil
 Sample Name : Blood Orange
 Injection Volume : 0.10 µL
 Lot Number : 12602
 Instrument ID : GC-2

Peak Report TIC

R.Time	Name	Area%
11.288	alpha-Pinene	0.54
13.378	Sabinene	0.30
13.658	beta-Pinene	0.07
14.303	Myrcene	1.86
15.161	Octanal	0.28
15.317	alpha-Phellandrene	0.05
15.447	delta-Carene	0.18
16.440	para-Cymene	0.02
16.810	Limonene	93.98
16.860	beta-Phellandrene	0.29
17.135	cis-beta-Ocimene	0.01
17.797	trans-beta-Ocimene	0.02
18.539	gamma-Terpinene	0.05
19.376	Octanol	0.03
20.026	Isoterpinene	0.01
20.285	Terpinolene	0.04
20.330	Unidentified	0.01
21.251	Linalool	0.77
21.631	Nonanal	0.03
22.522	alpha-Fenchol	0.02
22.706	trans-para-Mentha-2,8-dienol	0.02
23.443	cis-Limonene oxide	0.02
23.724	trans-Limonene oxide	0.04
24.792	Citronellal	0.04
26.686	Terpinen-4-ol	0.01
27.684	alpha-Terpineol	0.18
28.489	Decanal	0.39
28.790	Octyl acetate	0.03
29.308	trans-Carveol	0.02
29.845	Citronellol	0.04
30.198	cis-Carveol	0.01
30.612	Neral	0.04
30.999	Carvone	0.02
32.627	Geranial	0.08
32.964	Decanol	0.02
33.119	Perillaldehyde	0.01
34.145	Carvacrol	0.02
39.632	alpha-Copaene	0.04
39.911	Geranyl acetate	0.01
40.431	beta-Cubebene	0.03
40.551	beta-Elementene	0.02
41.953	Dodecanal	0.03
42.407	beta-Caryophyllene	0.09
43.068	beta-Copaene	0.02
44.658	alpha-Humulene	0.04
46.262	Germacrene D	0.02
46.960	Valencene	0.11
47.183	Unidentified	0.01
48.552	delta-Cadinene	0.04
57.059	Unidentified	0.02
58.696	beta-Sinensal	0.01
		100.00

Chromatogram 98401-64



This report is provided as a courtesy to our customers for their evaluation only. Any publishing, copying, use, dissemination, or distribution of this report, including online, without the express written permission of Shay and Company is strictly prohibited. To inquire about licensing analytical reporting services, please contact orders@shayandcompany.com.