

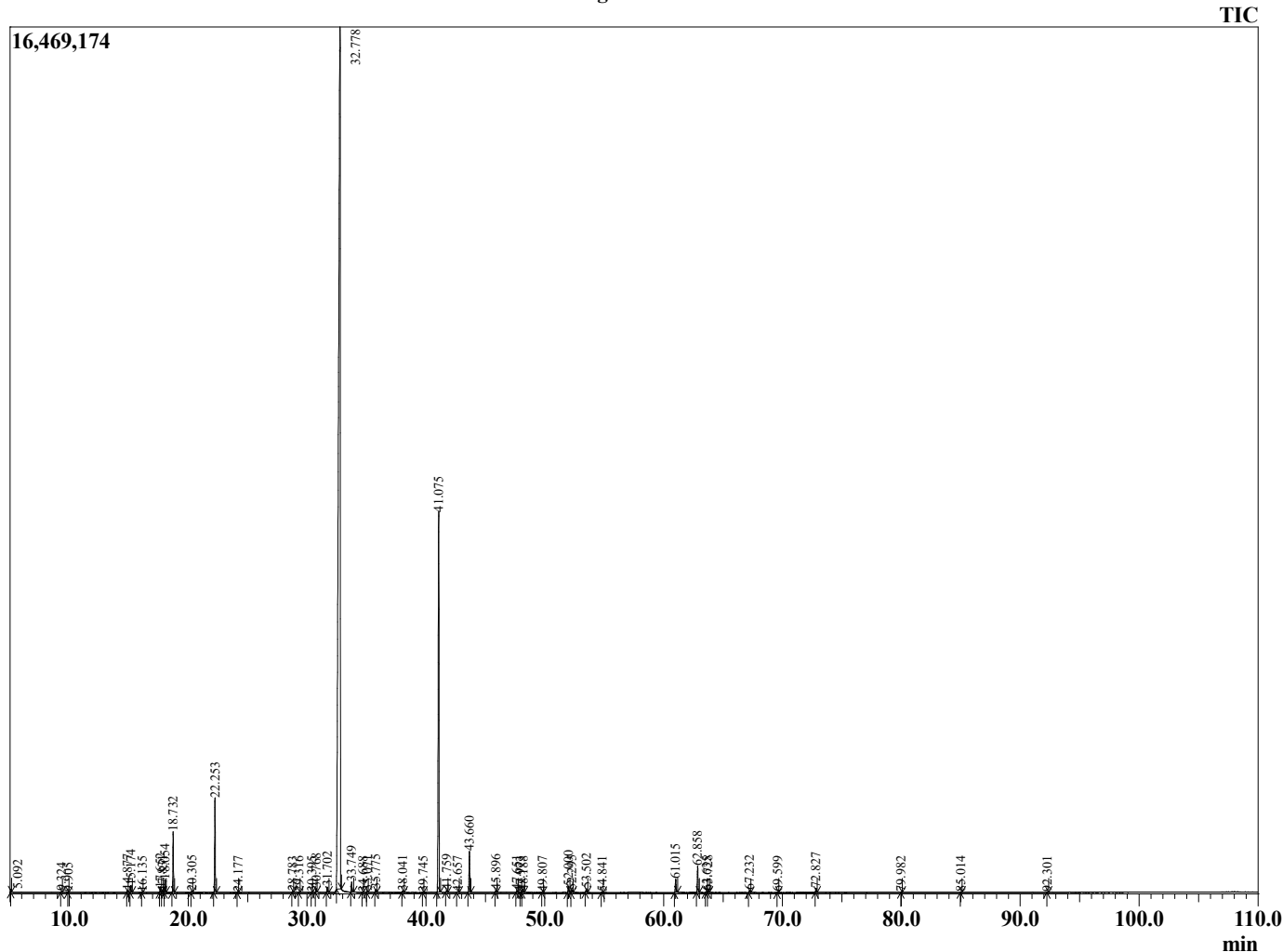
Sample Information

Analyzed by : AG  
 Analyzed : 5/6/2024 4:23:12 PM  
 Sample Type : Essential Oil  
 Sample Name : Palmarosa  
 Injection Volume : 0.10  
 Lot Number : 12695  
 Instrument ID : GC-4

Peak Report TIC

R.Time	Name	Area%
2.941	Ethanol	0.03
3.577	2-Methyl 3-Buten-2-ol	0.01
3.993	3-Methylbutanal	0.01
4.106	Unidentified	0.01
5.092	3-Methylbutanol	0.05
9.324	Isoamyl acetate	0.02
9.905	2-Heptanone	0.01
14.877	6-Methyl hept-5-en-2-one	0.06
15.174	Myrcene	0.20
16.135	cis-Dehydrolinalool oxide	0.01
17.652	Limonene	0.11
17.831	1,8-Cineole	0.03
18.054	cis-beta-Ocimene	0.36
18.732	trans-beta-Ocimene	1.71
20.305	1-Octanol	0.04
22.253	Linalool	2.88
24.177	allo-Ocimene	0.02
28.783	alpha-Terpineol	0.02
29.316	Unidentified	0.01
30.395	Coumarin	0.01
30.768	Nerol	0.12
31.702	Neral	0.18
32.778	Geraniol	74.62
33.749	Geranial	0.33
34.688	trans-Carvone oxide	0.01
35.071	Unidentified	0.03
35.775	Geranyl formate	0.09
38.041	Unidentified	0.05
39.745	Unidentified	0.01
41.075	Geranyl acetate	14.84
41.759	beta-Elementene	0.09
42.657	Unidentified	0.03
43.660	beta-Caryophyllene	1.47
45.896	alpha-Humulene	0.09
47.651	Selina-4,11-diene	0.07
47.973	beta-Selinene	0.02
48.188	Valencene	0.04
49.807	alpha-Panasinsen	0.03
52.000	Geranyl butyrate	0.22
52.295	trans-Nerolidol	0.07
53.502	Caryophyllene oxide	0.15
54.841	Geranyl 2-methylbutyrate	0.03
61.015	(2E,6E)-Farnesol	0.49
62.858	Geraniol hexanoate	0.93
63.635	Unidentified	0.07
63.728	Unidentified	0.05
67.232	Farnesyl acetate isomer	0.08
69.599	Unidentified	0.01
72.827	Geranyl octanoate	0.14
79.982	Thiogeraniol isomer	0.01
85.014	Thiogeraniol isomer	0.02
92.301	Unidentified	0.02
		100.00

Chromatogram 98401-45



This report is provided as a courtesy to our customers for their evaluation only. Any publishing, copying, use, dissemination, or distribution of this report, including online, without the express written permission of Shay and Company is strictly prohibited. To inquire about licensing analytical reporting services, please contact orders@shayandcompany.com