



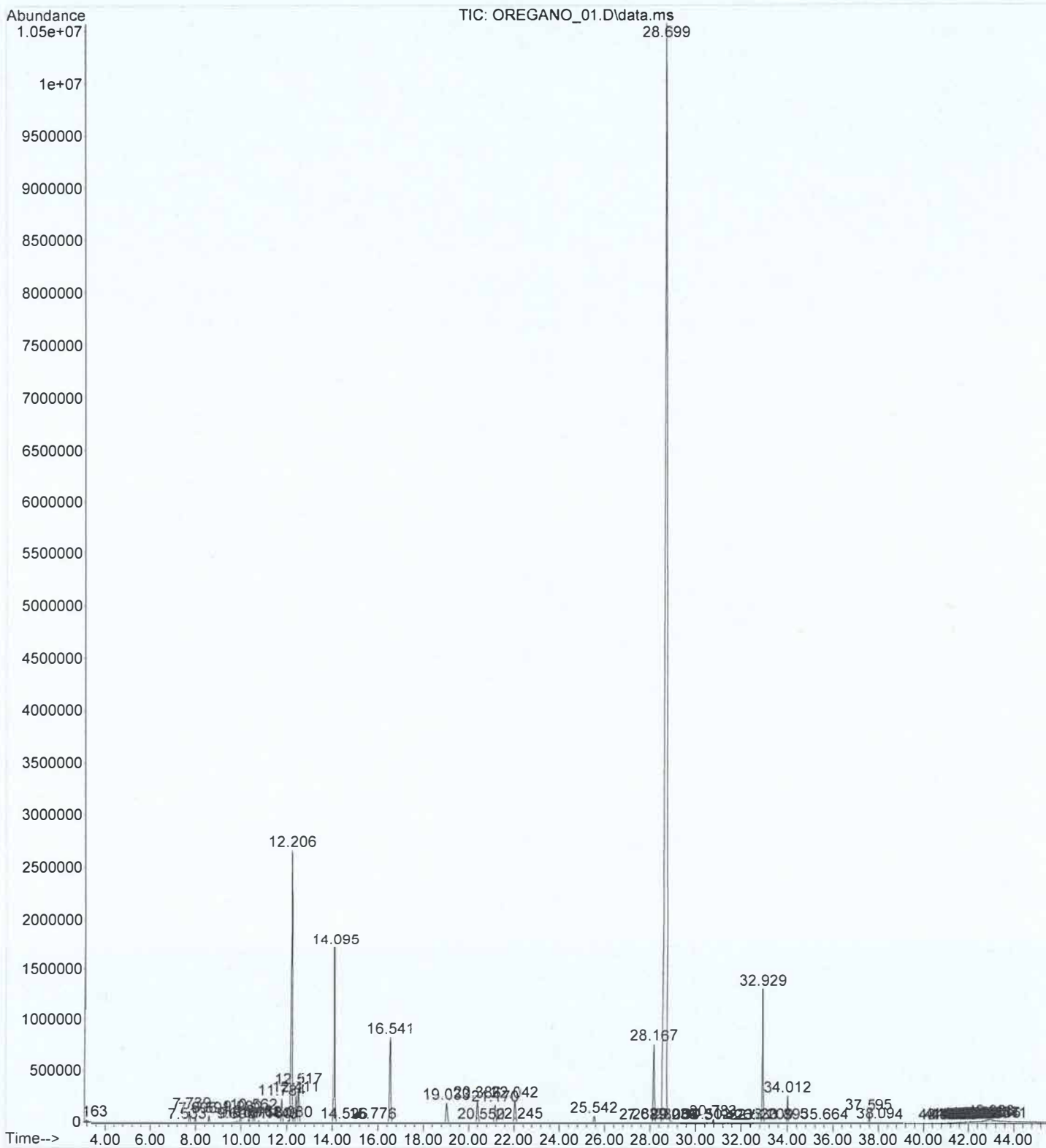
OREGANO OIL

CHEMICAL COMPOSITION (GC-MS)

LOT NO. 13164

| PEAK RT | COMPOUND | CONTENT (%) | SPECIFICATION |
|---------|-----------------|-------------|---------------|
| 12.206 | PARA CYMENE | 9.12 | 2 – 9% |
| 14.095 | GAMMA TERPINENE | 6.30 | 1 – 7% |
| 28.167 | THYMOL | 2.78 | 1 – 8% |
| 28.699 | CARVACROL | 64.83 | 60 – 75% |

File : C:\msdchem\1\data\2025\04-09-25\OREGANO_01.D
 Operator : SS
 Acquired : 9 Apr 2025 13:50 using AcqMethod METHOD_7.M
 Instrument : GCMS
 Sample Name: OREGANO
 Misc Info : OIL 13164
 Vial Number: 1



Area Percent Report

Data Path : C:\msdchem\1\data\2025\04-09-25\
Data File : OREGANO_01.D
Acq On : 9 Apr 2025 13:50
Operator : SS
Sample : OREGANO OIL
Misc : 13164
ALS Vial : 1 Sample Multiplier: 1

Integration Parameters: autoint1.e
Integrator: ChemStation

Method : C:\msdchem\1\methods\METHOD_7.M
Title : Eoil Qualitative

Signal : TIC: OREGANO_01.D\data.ms

| peak # | R.T. min | first scan | max scan | last scan | PK TY | peak height | corr. area | corr. % max. | % of total |
|--------|----------|------------|----------|-----------|-------|-------------|------------|--------------|------------|
| 1 | 3.163 | 3 | 14 | 33 | BV 8 | 14902 | 770363 | 0.11% | 0.072% |
| 2 | 7.533 | 770 | 778 | 787 | BB 4 | 4326 | 115894 | 0.02% | 0.011% |
| 3 | 7.739 | 802 | 814 | 827 | BB | 105965 | 2902824 | 0.42% | 0.271% |
| 4 | 7.996 | 847 | 859 | 872 | BB 2 | 58671 | 1719905 | 0.25% | 0.160% |
| 5 | 8.591 | 947 | 963 | 976 | BB 4 | 60880 | 1849152 | 0.27% | 0.173% |
| 6 | 9.695 | 1146 | 1156 | 1168 | BV 6 | 6492 | 227412 | 0.03% | 0.021% |
| 7 | 9.810 | 1168 | 1176 | 1189 | VV 6 | 12893 | 424182 | 0.06% | 0.040% |
| 8 | 9.980 | 1189 | 1206 | 1227 | PV | 72459 | 2284334 | 0.33% | 0.213% |
| 9 | 10.346 | 1260 | 1270 | 1294 | BV 3 | 31716 | 1089357 | 0.16% | 0.102% |
| 10 | 10.562 | 1294 | 1307 | 1322 | PV 2 | 91576 | 2983450 | 0.43% | 0.278% |
| 11 | 10.766 | 1328 | 1343 | 1358 | PB 2 | 15559 | 500142 | 0.07% | 0.047% |
| 12 | 11.160 | 1395 | 1412 | 1422 | BB 4 | 8715 | 346762 | 0.05% | 0.032% |
| 13 | 11.448 | 1450 | 1462 | 1473 | BB 5 | 6233 | 192209 | 0.03% | 0.018% |
| 14 | 11.784 | 1505 | 1521 | 1539 | BB 3 | 227482 | 7980545 | 1.15% | 0.745% |
| 15 | 12.080 | 1559 | 1573 | 1578 | VV 2 | 21440 | 685974 | 0.10% | 0.064% |
| 16 | 12.206 | 1578 | 1595 | 1613 | VV | 2648108 | 97724647 | 14.07% | 9.119% |
| 17 | 12.411 | 1613 | 1630 | 1640 | VV 2 | 260602 | 9428075 | 1.36% | 0.880% |
| 18 | 12.517 | 1640 | 1649 | 1670 | VB 3 | 339366 | 13034414 | 1.88% | 1.216% |
| 19 | 14.095 | 1905 | 1925 | 1945 | BB | 1712962 | 67484487 | 9.71% | 6.297% |
| 20 | 14.526 | 1989 | 2000 | 2017 | BB 5 | 5919 | 196070 | 0.03% | 0.018% |
| 21 | 15.776 | 2208 | 2219 | 2237 | BB 7 | 4833 | 215468 | 0.03% | 0.020% |
| 22 | 16.541 | 2332 | 2352 | 2382 | BV 2 | 825025 | 33615879 | 4.84% | 3.137% |
| 23 | 19.033 | 2773 | 2788 | 2827 | BV 4 | 192356 | 9288152 | 1.34% | 0.867% |
| 24 | 20.386 | 3006 | 3024 | 3046 | BV 2 | 211284 | 10003507 | 1.44% | 0.934% |
| 25 | 20.550 | 3046 | 3053 | 3064 | VV 10 | 4624 | 211015 | 0.03% | 0.020% |
| 26 | 21.170 | 3125 | 3161 | 3197 | PV 4 | 175830 | 8154099 | 1.17% | 0.761% |
| 27 | 22.042 | 3296 | 3314 | 3337 | BV 3 | 212331 | 10605040 | 1.53% | 0.990% |
| 28 | 22.245 | 3337 | 3349 | 3363 | VV 5 | 3540 | 157291 | 0.02% | 0.015% |
| 29 | 25.542 | 3907 | 3925 | 3943 | BB 2 | 67303 | 2889032 | 0.42% | 0.270% |
| 30 | 27.689 | 4290 | 4301 | 4318 | BV 7 | 4411 | 151001 | 0.02% | 0.014% |
| 31 | 28.167 | 4364 | 4384 | 4403 | BV | 761241 | 29797301 | 4.29% | 2.781% |
| 32 | 28.282 | 4403 | 4404 | 4419 | VV 4 | 6405 | 181010 | 0.03% | 0.017% |
| 33 | 28.699 | 4433 | 4477 | 4534 | PV | 10458796 | 694704418 | 100.00% | 64.828% |
| 34 | 29.030 | 4534 | 4535 | 4539 | VV 3 | 4488 | 66632 | 0.01% | 0.006% |
| 35 | 29.059 | 4539 | 4540 | 4542 | VV 2 | 3676 | 37498 | 0.01% | 0.003% |
| 36 | 29.086 | 4542 | 4545 | 4551 | VV 6 | 2617 | 45330 | 0.01% | 0.004% |
| 37 | 30.502 | 4771 | 4792 | 4812 | PV 5 | 12379 | 387360 | 0.06% | 0.036% |
| 38 | 30.783 | 4829 | 4841 | 4856 | PV 3 | 42212 | 1291632 | 0.19% | 0.121% |
| 39 | 31.426 | 4935 | 4954 | 4967 | BV 6 | 6055 | 219077 | 0.03% | 0.020% |
| 40 | 32.520 | 5134 | 5145 | 5160 | PV 4 | 8416 | 212814 | 0.03% | 0.020% |

| | | | | | | | | | |
|----|--------|------|------|------|------|---------|----------|-------|--------|
| 41 | 32.929 | 5201 | 5216 | 5238 | BV 2 | 1288290 | 39291522 | 5.66% | 3.667% |
| 42 | 33.209 | 5253 | 5265 | 5279 | PV 5 | 8094 | 232497 | 0.03% | 0.022% |
| 43 | 33.895 | 5374 | 5385 | 5392 | PV 4 | 7309 | 173439 | 0.02% | 0.016% |
| 44 | 34.012 | 5392 | 5406 | 5420 | VV 3 | 263573 | 7742928 | 1.11% | 0.723% |
| 45 | 35.664 | 5687 | 5694 | 5703 | BV 4 | 5932 | 126027 | 0.02% | 0.012% |
| 46 | 37.595 | 6016 | 6032 | 6041 | BV 3 | 99240 | 2546900 | 0.37% | 0.238% |
| 47 | 38.094 | 6112 | 6119 | 6127 | BV 4 | 17119 | 310534 | 0.04% | 0.029% |
| 48 | 40.823 | 6588 | 6596 | 6601 | PV 4 | 5087 | 75003 | 0.01% | 0.007% |
| 49 | 41.094 | 6632 | 6643 | 6648 | VV 5 | 10776 | 150327 | 0.02% | 0.014% |
| 50 | 41.282 | 6671 | 6676 | 6680 | PV 7 | 3797 | 64366 | 0.01% | 0.006% |
| 51 | 41.378 | 6683 | 6693 | 6695 | VV 7 | 2371 | 53214 | 0.01% | 0.005% |
| 52 | 41.398 | 6695 | 6696 | 6701 | VV 5 | 2600 | 29627 | 0.00% | 0.003% |
| 53 | 41.584 | 6722 | 6729 | 6732 | VV 9 | 5076 | 94077 | 0.01% | 0.009% |
| 54 | 41.746 | 6744 | 6757 | 6763 | VV 9 | 3064 | 129750 | 0.02% | 0.012% |
| 55 | 41.801 | 6763 | 6767 | 6770 | VV 6 | 3179 | 55145 | 0.01% | 0.005% |
| 56 | 41.888 | 6770 | 6782 | 6793 | VV 6 | 10446 | 280883 | 0.04% | 0.026% |
| 57 | 41.966 | 6793 | 6796 | 6799 | VV 5 | 4108 | 59104 | 0.01% | 0.006% |
| 58 | 42.022 | 6799 | 6805 | 6807 | VV 6 | 3248 | 71436 | 0.01% | 0.007% |
| 59 | 42.074 | 6807 | 6815 | 6818 | VV 8 | 5474 | 132874 | 0.02% | 0.012% |
| 60 | 42.111 | 6818 | 6821 | 6827 | VV 8 | 5140 | 100119 | 0.01% | 0.009% |
| 61 | 42.154 | 6827 | 6829 | 6832 | VV 4 | 4573 | 55383 | 0.01% | 0.005% |
| 62 | 42.250 | 6838 | 6845 | 6847 | VV 7 | 3755 | 92744 | 0.01% | 0.009% |
| 63 | 42.279 | 6847 | 6850 | 6855 | VV 7 | 5271 | 108062 | 0.02% | 0.010% |
| 64 | 42.358 | 6862 | 6864 | 6866 | VV 3 | 4154 | 36198 | 0.01% | 0.003% |
| 65 | 42.388 | 6866 | 6869 | 6871 | VV 4 | 4311 | 54892 | 0.01% | 0.005% |
| 66 | 42.485 | 6871 | 6886 | 6890 | VV 4 | 4527 | 235824 | 0.03% | 0.022% |
| 67 | 42.541 | 6890 | 6896 | 6899 | VV 7 | 4840 | 121097 | 0.02% | 0.011% |
| 68 | 42.671 | 6899 | 6919 | 6922 | VV 7 | 9114 | 471741 | 0.07% | 0.044% |
| 69 | 42.988 | 6922 | 6974 | 7006 | VV 7 | 22420 | 4291127 | 0.62% | 0.400% |
| 70 | 43.187 | 7006 | 7009 | 7016 | VV 9 | 4938 | 125508 | 0.02% | 0.012% |
| 71 | 43.245 | 7016 | 7019 | 7021 | VV 4 | 2280 | 32970 | 0.00% | 0.003% |
| 72 | 43.266 | 7021 | 7023 | 7025 | VV 3 | 2633 | 20202 | 0.00% | 0.002% |
| 73 | 43.541 | 7064 | 7071 | 7083 | PV 3 | 3232 | 69971 | 0.01% | 0.007% |

Sum of corrected areas: 1071609249