



**Shay & Company**  
NATURAL INGREDIENT SUPPLIER

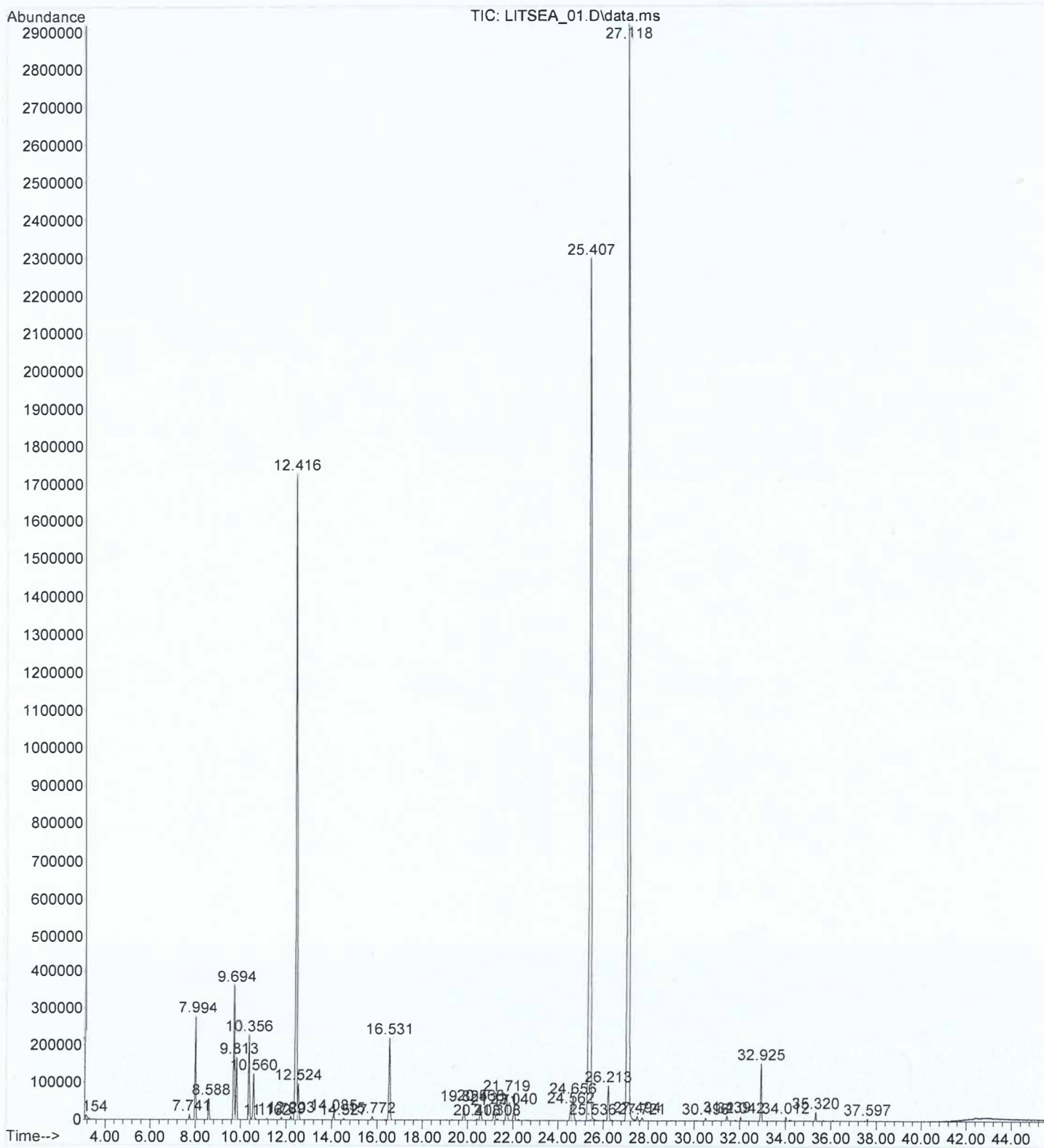
**LITSEA CUBEBA OIL**

**CHEMICAL COMPOSITION (GC-MS)**

**LOT NO. 12943**

<b>PEAK RT</b>	<b>COMPOUND</b>	<b>CONTENT (%)</b>	<b>SPECIFICATION</b>
7.994	ALPHA PINENE	1.88	MAX 2.0 %
12.416	LIMONENE	15.28	9 – 15 %
10356	METHYL HEPTENENE	1.76	0.5 – 3.0 %
19.824	CITRONELLAL	0.40	MAX 3.0 %
25.407	CITRAL	66.19	63 – 78 %
27.118			
24.656	CITRONELLOL	0.76	0.5 – 1.5 %
24.562	NEROL	0.35	0.2 – 1.2 %
26.213	GERANIOL	0.89	0.5 – 1.5 %

File :C:\msdchem\1\data\2024\12-29-24\LITSEA\_01.D  
Operator : SS  
Acquired : 29 Dec 2024 18:47 using AcqMethod METHOD\_7.M  
Instrument : GCMS  
Sample Name: LITSEA CUBEBA  
Misc Info : 12943  
Vial Number: 1



## Area Percent Report

Data Path : C:\msdchem\1\data\2024\12-29-24\  
 Data File : LITSEA\_01.D  
 Acq On : 29 Dec 2024 18:47  
 Operator : SS  
 Sample : LITSEA CUBEBA  
 Misc : 12943  
 ALS Vial : 1 Sample Multiplier: 1

Integration Parameters: autoint1.e  
 Integrator: ChemStation

Method : C:\msdchem\1\methods\METHOD\_7.M  
 Title : Boil Qualitative

Signal : TIC: LITSEA\_01.D\data.ms

peak #	R.T. min	first scan	max scan	last scan	PK TY	peak height	corr. area	corr. % max.	% of total
1	3.154	3	13	40	BV 10	10259	579455	0.37%	0.136%
2	7.741	805	814	824	BB	14005	350913	0.23%	0.082%
3	7.994	846	859	874	BB	275613	8025896	5.18%	1.883%
4	8.588	951	962	975	BB 4	56145	1714652	1.11%	0.402%
5	9.694	1141	1156	1167	BV 2	361310	11443002	7.39%	2.685%
6	9.813	1167	1176	1192	VB	166225	5611194	3.62%	1.316%
7	10.356	1261	1271	1290	BV 2	227420	7507885	4.85%	1.761%
8	10.560	1290	1307	1321	VV	122820	4193164	2.71%	0.984%
9	11.162	1401	1412	1422	BB 3	3416	121341	0.08%	0.028%
10	11.789	1510	1522	1532	BB 4	7055	224451	0.14%	0.053%
11	12.203	1582	1594	1607	BV 2	10251	326811	0.21%	0.077%
12	12.416	1607	1631	1644	PV 2	1722993	65134244	42.04%	15.282%
13	12.524	1644	1650	1670	VB 4	96488	3526169	2.28%	0.827%
14	14.085	1912	1923	1936	BB 4	16350	607676	0.39%	0.143%
15	14.527	1992	2000	2012	BB 6	4664	138312	0.09%	0.032%
16	15.772	2206	2218	2235	BB 4	9645	368065	0.24%	0.086%
17	16.531	2335	2351	2378	PV 3	218655	8609106	5.56%	2.020%
18	19.824	2913	2926	2945	BB 4	41018	1698217	1.10%	0.398%
19	20.408	3017	3028	3041	BV 4	4183	158105	0.10%	0.037%
20	20.568	3041	3056	3074	VV 5	43132	1763597	1.14%	0.414%
21	21.171	3146	3162	3178	BV 6	31096	1398963	0.90%	0.328%
22	21.308	3178	3185	3200	VB 7	4228	177073	0.11%	0.042%
23	21.719	3242	3257	3279	BV 6	68751	2907470	1.88%	0.682%
24	22.040	3297	3313	3334	BV 5	34568	1579967	1.02%	0.371%
25	24.562	3736	3754	3760	BV 8	36081	1505401	0.97%	0.353%
26	24.656	3760	3771	3801	VV 6	61894	3249640	2.10%	0.762%
27	25.407	3870	3902	3923	BV 2	2293963	127230631	82.13%	29.851%
28	25.536	3923	3924	3927	VV 3	1938	16353	0.01%	0.004%
29	26.213	4027	4043	4065	BV 3	92150	3796778	2.45%	0.891%
30	27.118	4170	4201	4235	BV	2911912	154917491	100.00%	36.346%
31	27.494	4256	4267	4282	VV 6	12416	476584	0.31%	0.112%
32	27.721	4295	4306	4325	VV 8	8303	341712	0.22%	0.080%
33	30.496	4782	4791	4805	BB 4	8287	243500	0.16%	0.057%
34	31.439	4943	4956	4968	BB 9	13378	437330	0.28%	0.103%
35	32.042	5052	5061	5071	BB 6	11043	300785	0.19%	0.071%
36	32.925	5203	5216	5230	BV 3	152528	4499619	2.90%	1.056%
37	34.012	5396	5406	5416	BB 4	10530	283141	0.18%	0.066%
38	35.320	5622	5634	5644	BB 4	23613	646431	0.42%	0.152%
39	37.597	6021	6032	6038	BB 4	6155	114931	0.07%	0.027%