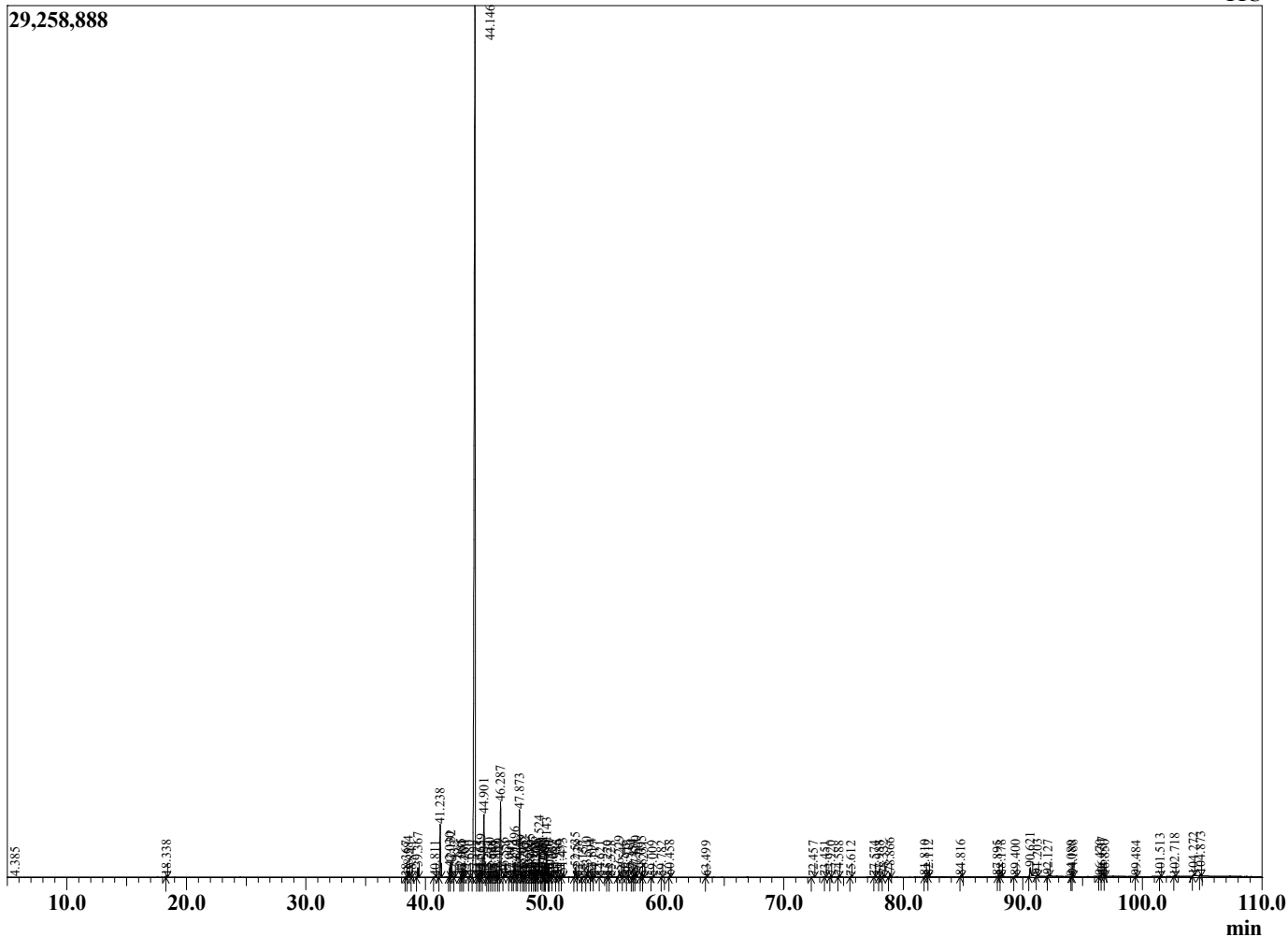


Sample Information

Analyzed by : AG
 Analyzed : 4/17/2024 12:22:19 PM
 Sample Type : Essential Oil
 Sample Name : Copaiba Balsam
 Injection Volume : 0.10
 Lot Number : 12659
 Instrument ID : GC-3

R.Time
 4.179
 4.385
 18.338
 38.367
 38.584
 38.841
 39.367
 40.811
 41.238
 42.030
 42.132
 42.432
 42.985
 43.091
 43.260
 43.680
 44.146
 44.377
 44.565
 44.659
 44.901
 45.222
 45.360
 45.528
 45.769
 45.883
 46.129
 46.287
 46.556
 47.009
 47.313
 47.496
 47.670
 47.873
 48.049
 48.235
 48.362
 48.563
 48.765
 48.956
 49.081
 49.221
 49.308
 49.524
 49.698
 49.831
 49.960
 50.006
 50.143
 50.330
 50.477
 50.652
 50.985
 51.239
 51.473
 52.535
 52.738
 53.157
 53.510
 53.894
 54.117
 54.621
 55.220
 55.528
 56.229
 56.546
 56.916
 57.354
 57.451
 57.600
 58.095
 58.251
 59.009
 59.782
 60.458
 63.499
 72.457
 73.451
 73.920
 74.588
 75.612
 77.574

Chromatogram 98401-52



This report is provided as a courtesy to our customers for their evaluation only. Any publishing, copying, use, dissemination, or distribution of this report, including on-line, without the express written permission of Shay and Company is strictly prohibited. To inquire about licensing analytical reporting services, please contact orders@shayandcompany.com.

R.Time
77.988
78.332
78.866
81.810
82.112
84.816
87.895
88.178
89.400
90.621
91.203
92.127
94.080
94.188
96.470
96.637
96.850
99.484
101.513
102.718
104.272
104.873