

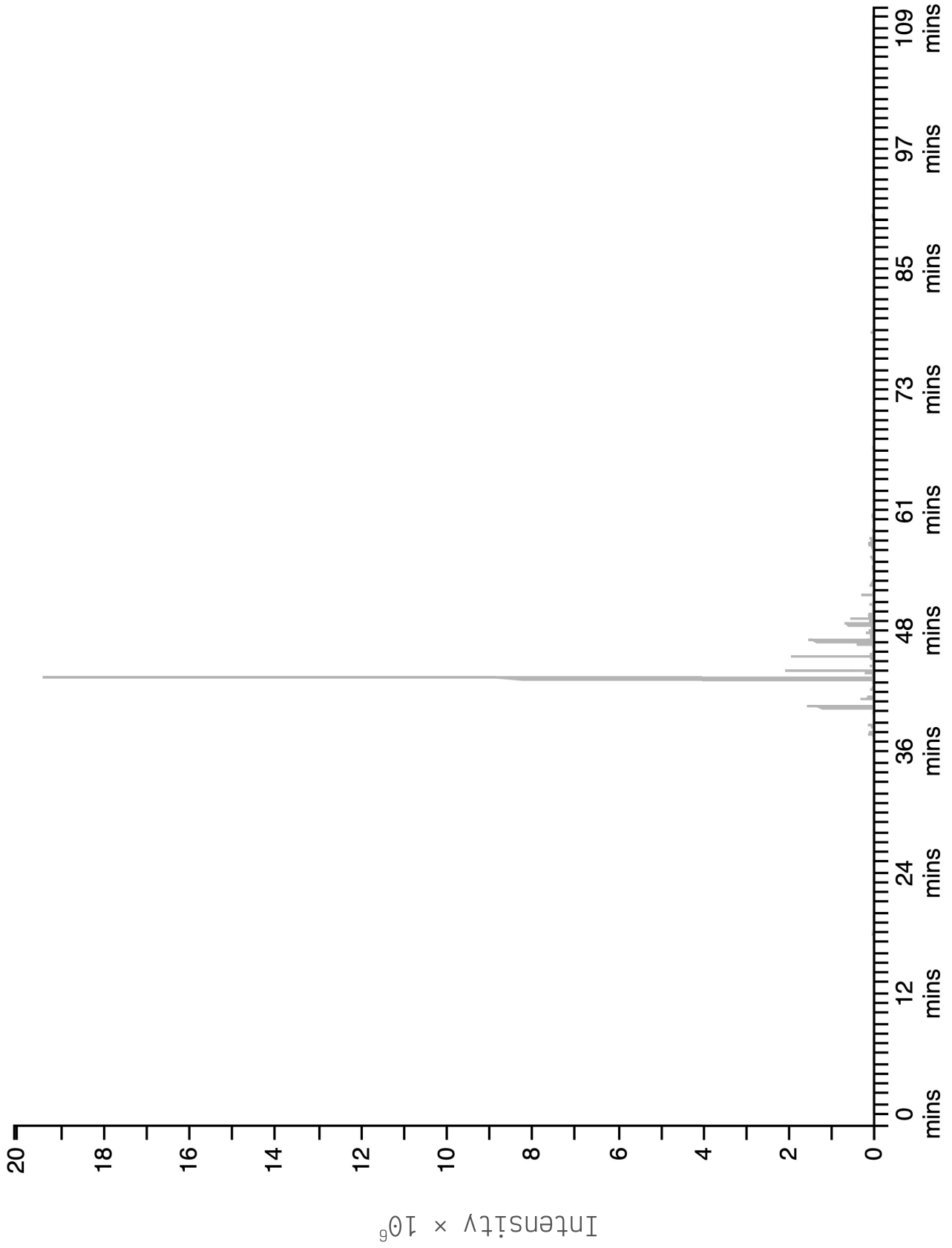
Ret. Time	Component	Ret. Idx.	Conc. %
17.277	para-Menth-1-ene	1023	0.01%
18.041	cis-beta-Ocimene	1035	0.08%
24.163	allo-Ocimene	1127	0.01%
37.972	Elemene isomer	1331	0.03%
38.196	delta-Elemene	1334	0.31%
38.969	alpha-Cubebene	1346	0.32%
40.412	alpha-Ylangene	1368	0.05%
40.842	alpha-Copaene	1375	3.7%
41.628	beta-Cubebene	1387	0.27%
41.736	beta-Elemene	1388	0.74%
42.038	Unidentified	1393	0.01%
42.582	Cyperene	1401	0.22%
42.688	cis-beta-Caryophyllene	1403	0.09%
42.854	alpha-Gurjunene	1406	0.02%
43.292	cis-alpha-Bergamotene	1413	0.08%
43.755	trans-beta-Caryophyllene	1420	68.62%
43.993	Unidentified	1424	0.06%
44.170	Unidentified	1427	0.05%
44.259	gamma-Elemene	1428	0.54%
44.504	trans-alpha-Bergamotene	1432	4.87%
44.814	Aromadendrene	1437	0.03%
44.968	cis-beta-Farnesene	1440	0.21%
45.120	Unidentified	1442	0.04%
45.367	epi-beta-Santalene	1446	0.07%
45.481	trans-Murrola-3,5-diene	1448	0.03%
45.615	Unidentified	1450	0.01%
45.741	trans-beta-Farnesene	1452	0.15%
45.886	alpha-Humulene	1454	4.8%
46.012	Sesquisabinene	1456	0.01%
46.148	Alloaromadendrene	1458	0.2%
46.290	cis-Muuroala-4(14),5-diene	1461	0.01%
46.604	Unidentified	1466	0.04%
46.907	trans-Cadina-1(6),4-diene	1471	0.07%
47.093	gamma-Muurolene	1474	1.01%
47.267	gamma-Curcumene	1476	0.07%
47.370	alpha-Amorphene	1478	0.06%
47.470	Germacrene D	1480	3.65%
47.646	trans-beta-Bergamotene	1482	0.44%
47.834	delta-Selinene	1485	0.03%
47.952	beta-Selinene	1487	0.22%

Ret. Time	Component	Ret. Idx.	Conc. %
48.095	Viridiflorene	1490	0.06%
48.165	trans-Murrola-4(14),5-diene	1491	0.1%
48.351	Bicyclgermacrene	1494	0.54%
48.549	alpha-Muurolene	1497	0.28%
48.687	alpha-Bisabolene	1499	0.17%
48.809	delta-Amorphene	1501	0.05%
48.916	Unidentified	1503	0.07%
49.126	beta-Bisabolene	1507	1.65%
49.301	cis-gamma-Bisabolene	1509	0.23%
49.423	gamma-Cadinene	1512	0.28%
49.540	Cadinene isomer	1514	0.03%
49.734	delta-Cadinene	1517	1.37%
49.960	cis-Calamenene	1521	0.03%
50.076	beta-Sesquiphellandrene	1523	0.36%
50.242	trans-gamma-Bisabolene	1525	0.05%
50.570	trans-Cadina-1,4-diene	1531	0.06%
50.827	alpha-Cadinene	1535	0.09%
51.072	transalpha-Bisabolene	1539	0.27%
51.239	Unidentified	1542	0.02%
52.116	Germacrene B	1557	0.7%
52.748	Unidentified	1568	0.03%
53.100	Caryophyllene alcohol	1574	0.26%
53.474	Caryophyllene oxide	1580	0.1%
53.699	Globulol	1584	0.02%
54.203	Viridiflorol	1592	0.03%
54.800	Ledol	1603	0.04%
55.720	Unidentified	1619	0.05%
55.810	Humulane-1,6-dien-3-ol	1621	0.22%
56.129	1-Epicubenol	1626	0.05%
56.521	Unidentified	1633	0.07%
56.936	tau-Cadinol	1641	0.08%
57.036	epi-alpha-Cadinol	1642	0.16%
57.185	delta-Cadinol	1645	0.3%
57.360	Unidentified	1648	0.01%
57.676	alpha-Cadinol	1654	0.28%
57.835	Unidentified	1657	0.04%
58.505	Unidentified	1668	0.02%
58.602	Unidentified	1670	0.03%
59.369	epi-alpha-Bisabolol	1684	0.02%
59.492	alpha-Bisabolol	1686	0.02%

Ret. Time	Component	Ret. Idx.	Conc. %
60.033	Juniper camphor	1696	0.1%
74.133	Kolavelool	1971	0.05%
74.372	Unidentified	1975	0.02%
77.113	Unidentified	2033	0.01%
77.873	Manool	2050	0.04%
78.406	Unidentified	2061	0.18%
84.343	Unidentified	2193	0.01%
87.654	Unidentified	2270	0.03%
88.924	Unidentified	2300	0.01%
90.086	Copalol	2329	0.05%
90.720	Unidentified	2344	0.04%
96.091	Unidentified	2479	0.01%

Total Identified Compounds **99.16 %**

TIC
19,392,978



*