

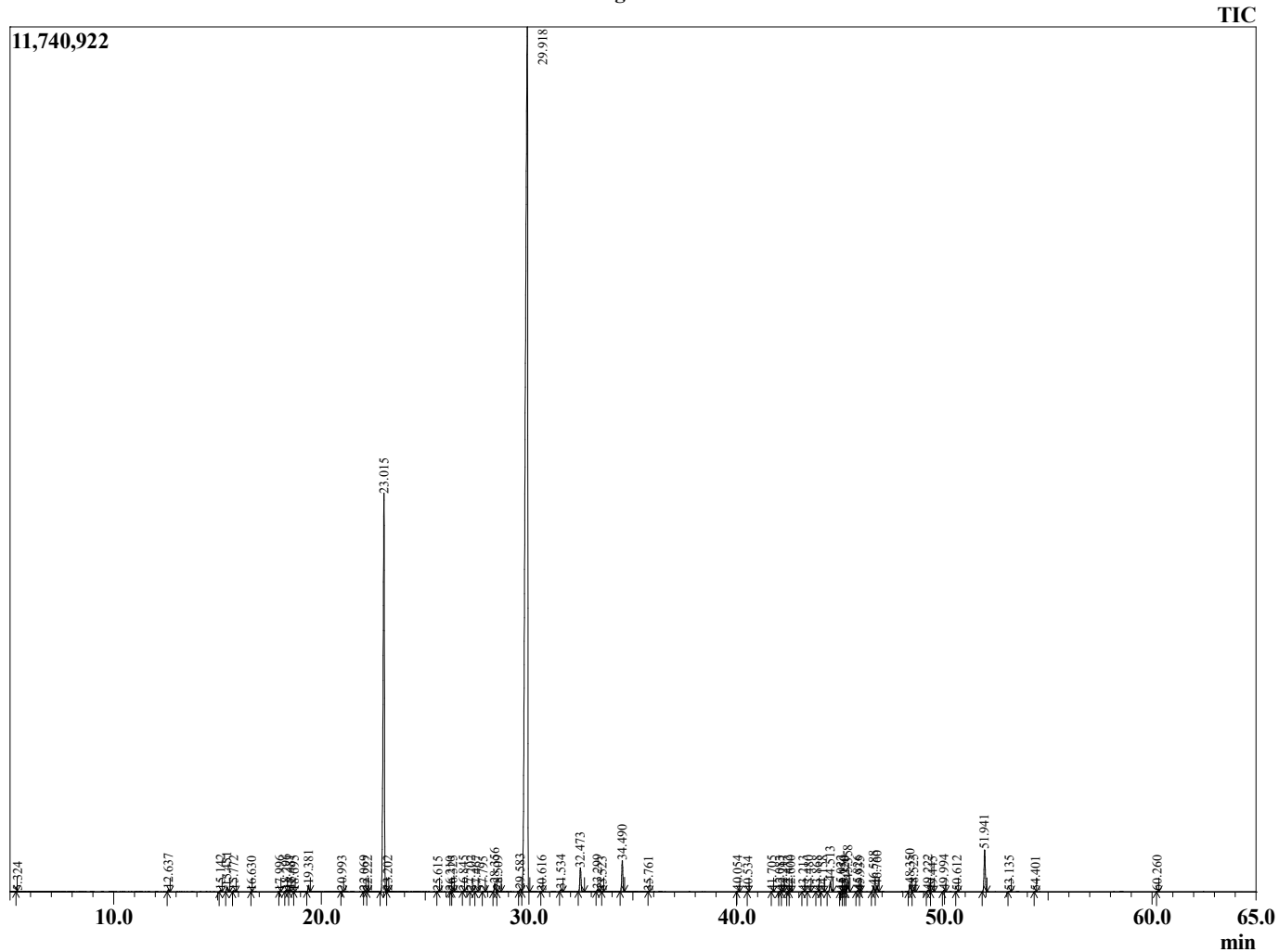
Sample Information

Analyzed by : T.W  
 Analyzed : 3/3/2023 9:11:49 PM  
 Sample Type : Essential Oil  
 Sample Name : Basil, Sweet  
 Injection Volume : 0.10 µL  
 Lot Number : 12759  
 Instrument ID : GC-3

Peak Report TIC

R.Time	Name	Area%
4.144	3-Methylbutanal	0.02
4.260	2-Methylbutanal	0.01
5.324	1-Pentanol	0.00
12.637	alpha-Pinene	0.08
15.142	beta-Pinene	0.05
15.451	6-Methyl hept-5-en-2-one	0.18
15.772	Myrcene	0.05
16.630	Octanal	0.00
17.996	para-Cymene	0.01
18.296	Limonene	0.04
18.481	1,8-cineole	0.06
18.695	cis-beta-Ocimene	0.01
19.381	trans-beta-Ocimene	0.24
20.993	cis-Linalool oxide (furanoid)	0.02
22.069	trans-Linalool oxide (furanoid)	0.02
22.222	Fenchone	0.01
23.015	Linalool	18.92
23.202	Unidentified	0.01
25.615	Epiphotoictral A	0.01
26.210	Camphor	0.01
26.325	trans-Chrysanthemal	0.03
26.845	Menthone	0.02
27.202	Isoneral	0.02
27.467	Isomenthone	0.02
27.795	Unidentified	0.01
28.356	Menthol	0.35
28.509	Isogeranial	0.06
29.583	alpha-Terpineol	0.13
29.918	Estragole	72.54
30.616	Octyl acetate	0.01
31.534	Nerol	0.08
32.473	Neral	1.00
33.299	Geraniol	0.10
33.523	Unidentified	0.01
34.490	Geranial	1.29
35.761	(E)-Anethole	0.01
40.054	Eugenol	0.04
40.534	Neryl acetate	0.01
41.705	alpha-Copaene	0.03
42.083	Unidentified	0.03
42.217	Hex-(3Z)-enyl hex-(3Z)-enoate	0.05
42.472	7-epi-Sesquithujene	0.02
42.600	beta-Elemene	0.02
43.213	Methyleugenol	0.03
43.480	Unidentified	0.02
43.868	Isolongifolol	0.03
44.158	Unidentified	0.04
44.513	beta-Caryophyllene	0.50
45.022	Unidentified	0.04
45.150	beta-Copaene	0.02
45.220	Unidentified	0.01
45.358	trans-alpha-Bergamotene	0.51
45.826	Sesquisabinene	0.06
45.935	Unidentified	0.01
46.588	trans-beta-Farnesene	0.26
46.760	alpha-Humulene	0.27
48.350	Germaacrene D	0.36
48.525	trans-beta-Bergamotene	0.08
49.222	beta-Acoradiene	0.10
49.445	Unidentified	0.02
49.994	beta-Bisabolene	0.07
50.612	delta-Cadinene	0.02

Chromatogram 98401-58



This report is provided as a courtesy to our customers for their evaluation only. Any publishing, copying, use, dissemination, or distribution of this report, including on-line, without the express written permission of Shay and Company is strictly prohibited. To inquire about licensing analytical reporting services, please contact orders@shayandcompany.com

R.Time	Name	Area%
51.941	(E)-alpha-Bisabolene	1.88
53.135	(E)-Nerolidol	0.02
54.401	Caryophyllene oxide	0.01
60.260	Unidentified	0.01
		100.00