



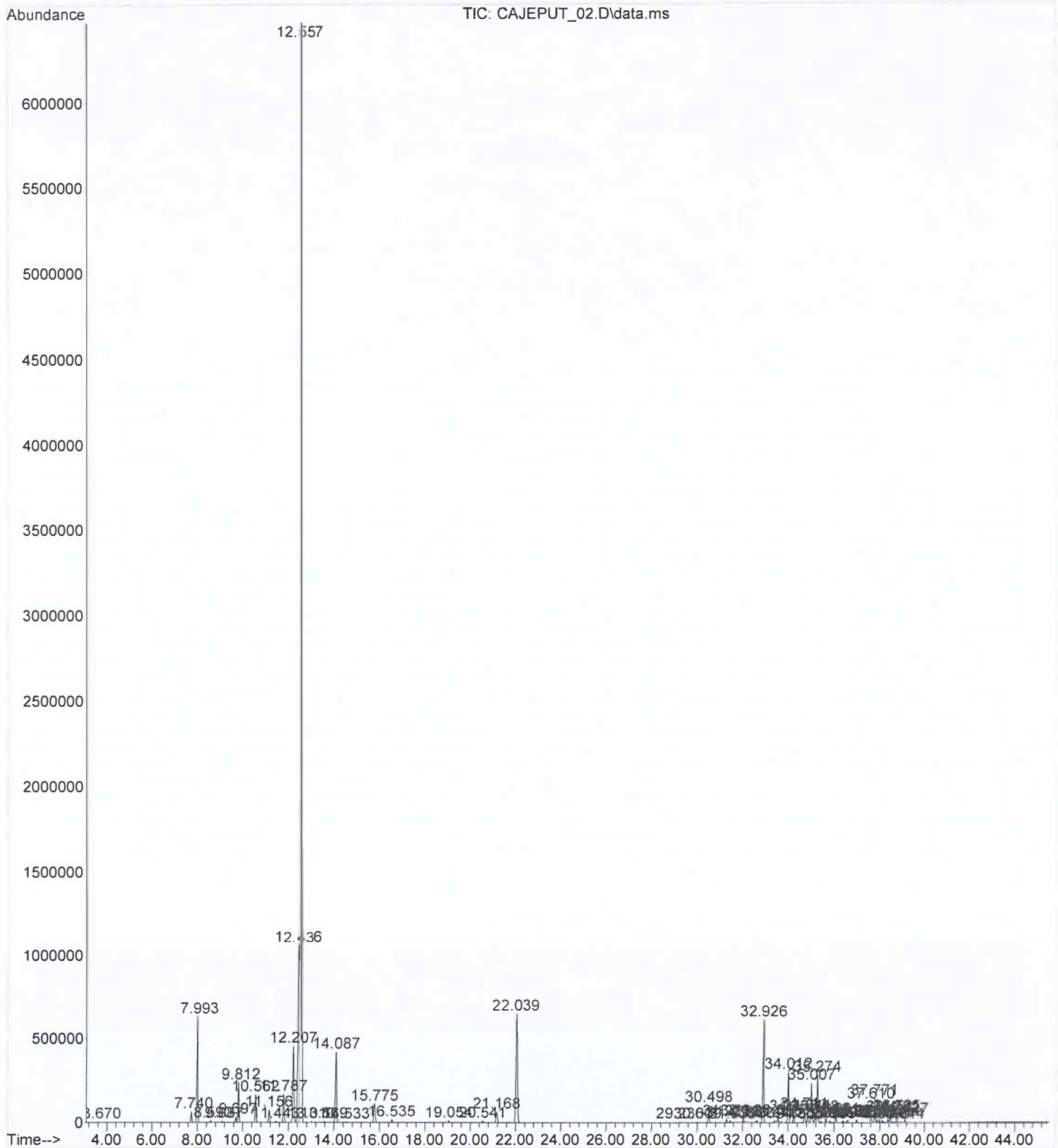
CAJEPUT OIL

CHEMICAL COMPOSITION (GC-MS)

LOT NO. 12943

PEAK RT	COMPOUND	CONTENT (%)	SPECIFICATION
7.99	ALPHA PINENE	3.49	
12.20	PARA CYMENE	3.43	
12.43	D-LIMONENE	7.95	
12.55	1,8 CINEOLE	55.85	55% MIN
16.53	LINALOOL	0.13	
22.04	ALPHA TERPINEOL	5.62	
32.92	CARYOPHYLLENE	3.52	

File : C:\msdchem\1\data\2024\12-29-24\CAJEPUT_02.D
Operator : SS
Acquired : 29 Dec 2024 19:39 using AcqMethod METHOD_7.M
Instrument : GCMS
Sample Name: CAJEPUT
Misc Info : 12943
Vial Number: 2



Area Percent Report

Data Path : C:\msdchem\1\data\2024\12-29-24\
 Data File : CAJEPUT_02.D
 Acq On : 29 Dec 2024 19:39
 Operator : SS
 Sample : CAJEPUT
 Misc : 12943
 ALS Vial : 2 Sample Multiplier: 1

Integration Parameters: autoint1.e
 Integrator: ChemStation

Method : C:\msdchem\1\methods\METHOD_7.M
 Title : Eoil Qualitative

Signal : TIC: CAJEPUT_02.D\data.ms

peak #	R.T. min	first scan	max scan	last scan	PK TY	peak height	corr. area	corr. % max.	% of total
1	3.670	95	103	115	BV 3	4546	91040	0.03%	0.017%
2	7.740	803	814	827	VB 3	64911	1773610	0.61%	0.339%
3	7.993	845	858	874	BB	626894	18222363	6.25%	3.488%
4	8.590	953	963	973	VB 4	10037	279021	0.10%	0.053%
5	9.087	1041	1050	1063	BB 3	6710	207686	0.07%	0.040%
6	9.697	1145	1156	1165	BV	33473	1000570	0.34%	0.192%
7	9.812	1165	1176	1193	VB 2	236654	8036759	2.75%	1.538%
8	10.562	1293	1307	1323	BB 2	165052	5339097	1.83%	1.022%
9	11.156	1394	1411	1426	BB	74614	2636527	0.90%	0.505%
10	11.443	1451	1461	1474	BB 3	6781	224423	0.08%	0.043%
11	11.787	1505	1521	1538	BB 3	168626	6033499	2.07%	1.155%
12	12.207	1576	1595	1614	BV 3	453433	17911783	6.14%	3.428%
13	12.436	1614	1635	1639	VV 3	1063673	41523587	14.23%	7.948%
14	12.557	1639	1656	1677	VV	6463465	291720213	100.00%	55.835%
15	13.010	1708	1735	1746	PB 4	5330	177224	0.06%	0.034%
16	13.569	1820	1833	1843	BV 5	6460	213855	0.07%	0.041%
17	14.087	1907	1923	1942	BB 2	418087	16154817	5.54%	3.092%
18	14.533	1993	2001	2014	BB 3	3500	115361	0.04%	0.022%
19	15.775	2203	2218	2239	BB 2	111869	4633944	1.59%	0.887%
20	16.535	2338	2351	2367	BV 4	17334	654271	0.22%	0.125%
21	19.054	2778	2791	2808	BV 7	9694	385981	0.13%	0.074%
22	20.541	3039	3051	3065	PV 6	8341	329218	0.11%	0.063%
23	21.168	3146	3161	3178	BV 6	64709	2790015	0.96%	0.534%
24	22.039	3292	3313	3340	BV 3	643997	29388709	10.07%	5.625%
25	29.236	4557	4571	4579	BV 6	4239	127803	0.04%	0.024%
26	30.009	4696	4706	4714	BB 4	3948	104440	0.04%	0.020%
27	30.498	4779	4791	4806	BB 2	101711	3063222	1.05%	0.586%
28	31.271	4916	4927	4943	BV 5	20487	610201	0.21%	0.117%
29	31.438	4943	4956	4965	PV 6	12404	336220	0.12%	0.064%
30	31.538	4965	4973	4986	VV 5	3886	108617	0.04%	0.021%
31	32.044	5052	5062	5071	BV 6	21566	604454	0.21%	0.116%
32	32.612	5152	5161	5171	BB 4	11794	312485	0.11%	0.060%
33	32.926	5200	5216	5233	BV	607371	18367185	6.30%	3.515%
34	33.422	5293	5302	5311	VV 7	13829	380694	0.13%	0.073%
35	33.555	5311	5326	5343	PV 6	24326	870486	0.30%	0.167%
36	33.712	5343	5353	5362	VB 7	7612	210503	0.07%	0.040%
37	34.012	5388	5406	5424	VV	293746	9015759	3.09%	1.726%
38	34.238	5432	5445	5457	BV 6	47929	1407029	0.48%	0.269%
39	34.506	5482	5492	5499	BV 2	3472	69618	0.02%	0.013%
40	34.711	5514	5528	5541	VV 8	65097	2328073	0.80%	0.446%

41	34.841	5541	5550	5565	VV	4	51946	1462752	0.50%	0.280%
42	35.007	5565	5580	5599	PV	2	231839	7128956	2.44%	1.364%
43	35.168	5599	5608	5615	VV	4	45975	1306423	0.45%	0.250%
44	35.274	5615	5626	5647	VV	3	278453	8486884	2.91%	1.624%
45	35.432	5647	5654	5663	VV	5	8000	215311	0.07%	0.041%
46	35.633	5675	5689	5699	PB	4	28486	777846	0.27%	0.149%
47	35.814	5712	5721	5729	BV	4	12320	313917	0.11%	0.060%
48	35.905	5729	5736	5747	VV	6	4197	113981	0.04%	0.022%
49	36.081	5757	5767	5784	VB	5	33244	1053112	0.36%	0.202%
50	36.394	5813	5822	5829	PV	5	12543	317847	0.11%	0.061%
51	36.569	5843	5852	5856	BV	6	13369	363101	0.12%	0.069%
52	36.601	5856	5858	5870	VV	3	12067	237296	0.08%	0.045%
53	36.979	5916	5924	5933	BV	4	17816	463132	0.16%	0.089%
54	37.610	6021	6034	6053	BV	3	121679	3007405	1.03%	0.576%
55	37.771	6053	6063	6076	VV	3	141629	3340913	1.15%	0.639%
56	37.880	6076	6082	6092	VV	3	19316	439326	0.15%	0.084%
57	37.985	6092	6100	6112	VV	3	22099	494045	0.17%	0.095%
58	38.091	6112	6118	6125	VV	3	17669	335583	0.12%	0.064%
59	38.157	6125	6130	6140	VV	6	9654	211745	0.07%	0.041%
60	38.308	6152	6156	6160	VV	4	5782	93465	0.03%	0.018%
61	38.355	6160	6165	6169	VV	4	22613	412072	0.14%	0.079%
62	38.454	6169	6182	6189	VV	4	47142	1236514	0.42%	0.237%
63	38.577	6197	6203	6212	VV	4	7985	215602	0.07%	0.041%
64	38.722	6221	6229	6232	PV	5	41374	734058	0.25%	0.140%
65	38.765	6232	6236	6252	VV	6	51449	1377624	0.47%	0.264%
66	38.944	6261	6267	6272	BV	3	4739	67436	0.02%	0.013%
67	39.127	6290	6300	6309	BB	2	33994	504154	0.17%	0.096%

Sum of corrected areas: 522470858

METHOD_7.M Tue Dec 31 14:05:02 2024