

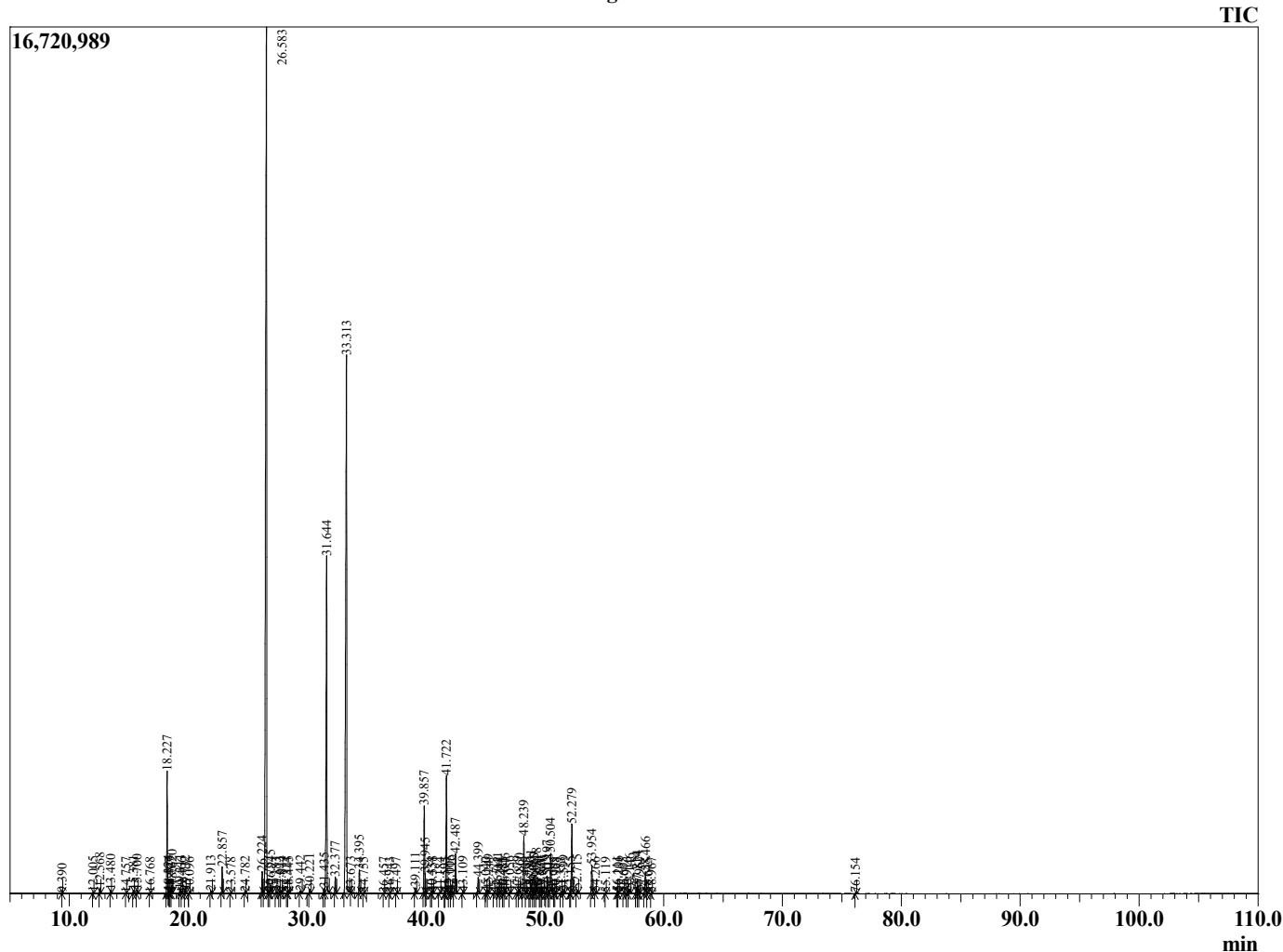
Sample Information

Analyzed by : TW  
 Analyzed : 5/19/2023 8:55:45 PM  
 Sample Type : Essential Oil  
 Sample Name : Citronella  
 Injection Volume : 0.10 µL  
 Lot Number : 12695  
 Instrument ID : GC-3

Peak Report TIC

R.Time	Name	Area%
9.390	1-Isopropyl-3-methylcyclopentane	0.01
12.005	Tricyclene	0.02
12.568	alpha-Pinene	0.11
13.480	Camphene	0.07
14.757	Sabinene	0.01
15.381	6-Methyl hept-5-en-2-one	0.06
15.700	Myrcene	0.08
16.768	alpha-Phellandrene	0.01
18.227	Limonene	2.98
18.324	beta-Phellandrene	0.01
18.407	Unidentified	0.01
18.529	Unidentified	0.02
18.620	cis-beta-Ocimene	0.19
19.311	trans-beta-Ocimene	0.09
19.466	Unidentified	0.01
19.732	2,6-Dimethyl-5-heptenal (Melonal)	0.06
20.096	gamma-Terpinene	0.01
21.913	Terpinolene	0.06
22.857	Linalool	0.68
23.578	cis-Rose oxide	0.01
24.782	Unidentified	0.04
26.224	Isopulegol	0.61
26.583	Citronellal	38.56
26.757	Menthone	0.05
26.945	Neoisopulegol	0.28
27.383	Isomenthone	0.01
27.673	Isoisopulegol	0.04
27.844	Borneol	0.03
28.314	Unidentified	0.01
28.445	Terpinen-4-ol	0.04
29.442	alpha-Terpineol	0.08
30.221	Decanal	0.12
31.435	Nerol	0.14
31.644	Citronellol	11.40
32.377	Neral	0.45
33.313	Geraniol	23.47
33.673	Unidentified	0.01
34.395	Geranial	0.65
34.755	Unidentified	0.01
36.457	Geranyl formate	0.01
36.943	Citronellic acid	0.02
37.497	Unidentified	0.02
39.111	Citriodiol isomer	0.16
39.857	Citronellyl acetate	2.67
39.945	Eugenol	0.46
40.434	Neryl acetate	0.02
40.558	Citriodiol isomer	0.05
41.184	Cyclosativene	0.04
41.595	alpha-Copaene	0.02
41.722	Geranyl acetate	3.57
42.005	beta-Elemene isomer	0.08
42.116	beta-Bourbonene	0.07
42.487	beta-Elemene	1.26
43.109	Methyleugenol	0.05
44.399	beta-Caryophyllene	0.53
45.040	beta-Copaene	0.03
45.249	trans-alpha-Bergamotene	0.10
45.723	cis-beta-Farnesene	0.01
46.041	trans-Isoeugenol	0.15
46.244	trans-Murrola-3,5-diene	0.03
46.481	trans-beta-Farnesene	0.02
46.646	alpha-Humulene	0.12

Chromatogram 98401-39



This report is provided as a courtesy to our customers for their evaluation only. Any publishing, copying, use, dissemination, or distribution of this report, including online, without the express written permission of Shay and Company is strictly prohibited. To inquire about licensing analytical reporting services, please contact orders@shayandcompany.com.

R.Time	Name	Area%
47.056	cis-Muurolo-4(14),5-diene	0.04
47.679	10-beta-H-Cadina-1(6),4-diene	0.04
47.860	trans-Cadina-1(6),4-diene	0.12
48.239	Germacrene D	1.79
48.409	Unidentified	0.01
48.730	Unidentified	0.02
48.831	(Z,Z)-alpha-Farnesene	0.31
49.060	(E)-Methyl isoeugenol	0.19
49.125	Unidentified	0.11
49.318	alpha-Muuroloene	0.33
49.570	Unidentified	0.01
49.661	(E,E)-alpha-Farnesene	0.02
49.840	Unidentified	0.05
50.197	gamma-Cadinene	0.56
50.318	Cubebol	0.10
50.504	delta-Cadinene	1.30
50.785	Zonarene	0.01
50.908	Citronellyl butyrate	0.02
51.353	trans-Cadina-1,4-diene	0.02
51.599	alpha-Cadinene	0.08
52.155	Elemicin	0.03
52.279	Elemol	2.24
52.715	Geranyl butyrate	0.11
53.954	Germacren D-4-ol	0.88
54.266	Caryophyllene oxide	0.02
55.119	Unidentified	0.01
56.111	Unidentified	0.04
56.206	1,10-di-Epicubenol	0.04
56.605	10-epi-gamma-Eudesmol	0.01
56.916	1-Epicubenol	0.03
57.146	gamma-Eudesmol	0.16
57.714	tau-Cadinol	0.20
57.824	epi-alpha-Cadinol	0.25
57.967	delta-Cadinol	0.06
58.466	alpha-Cadinol	0.80
58.645	Unidentified	0.01
58.967	Intermedeol	0.02
76.154	Unidentified	0.02
		100.00