

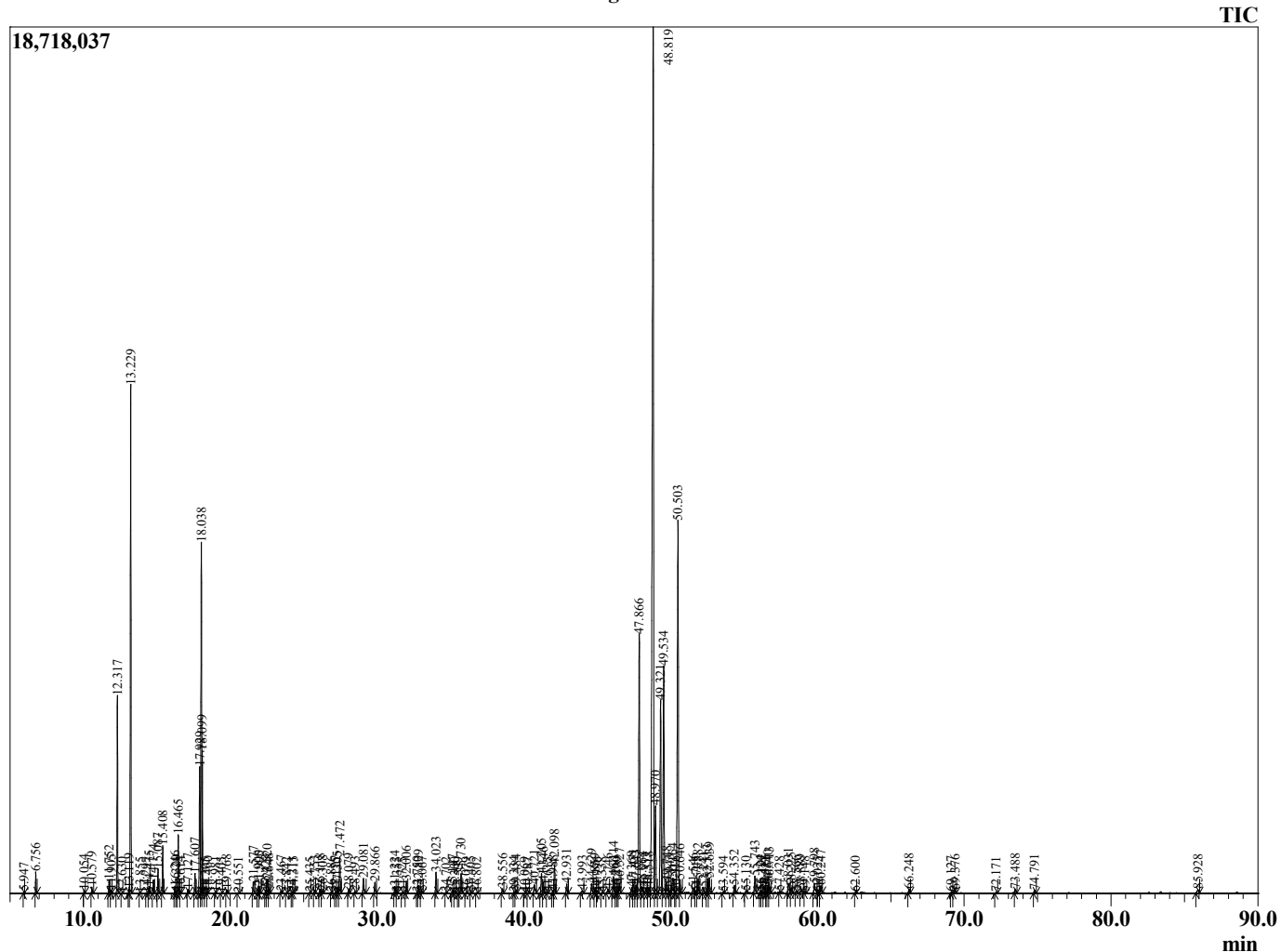
Sample Information

Analyzed by : KS  
 Analyzed : 5/17/2024 12:20:24 PM  
 Sample Type : Essential Oil  
 Sample Name : Ginger Root Essential Oil  
 Injection Volume : 0.10 µL  
 Lot Number : 12602  
 Instrument ID : GC-3

Peak Report TIC

R.Time	Name	Area%
4.048	3-Methylbutanal	0.01
4.156	2-Methylbutanal	0.01
5.947	Toluene	0.02
6.756	Hexanal	0.25
10.054	2-Heptanone	0.05
10.579	2-Heptanol	0.09
11.752	Tricyclene	0.19
11.905	alpha-Thujene	0.05
12.317	alpha-Pinene	3.11
12.630	beta-Fenchene	0.01
13.119	alpha-Fenchene	0.07
13.229	Camphene	8.76
13.855	Verbenene	0.01
14.297	Hexanoic acid	0.01
14.475	Sabinene	0.11
14.774	beta-Pinene	0.23
15.087	6-Methyl hept-5-en-2-one	0.41
15.408	Myrcene	0.82
16.246	Octanal	0.13
16.320	Pseudolimonene	0.03
16.465	alpha-Phellandrene	1.02
16.614	delta-3-Carene	0.03
17.127	alpha-Terpinene	0.07
17.607	para-Cymene	0.36
17.929	Limonene	2.70
18.038	beta-Phellandrene	7.35
18.099	1,8-Cineole	1.90
18.305	cis-beta-Ocimene	0.01
18.460	2-Heptyl acetate	0.02
18.981	trans-beta-Ocimene	0.02
19.405	Bergamot	0.01
19.768	gamma-Terpinene	0.06
20.551	trans-Sabinene hydrate	0.01
21.577	Terpinolene	0.22
21.900	2-Nonanone	0.13
21.995	Rosefuran	0.13
22.423	Unidentified	0.06
22.520	Linalool	0.28
22.648	2-Nonanol	0.09
23.467	4,8-Dimethyl nona-1,3,7-triene	0.05
23.842	endo-Fenchol	0.01
24.211	cis-para-Menth-2-en-1-ol	0.02
24.315	trans-Pinene hydrate	0.02
25.435	trans-para-Menth-2-en-1-ol	0.02
25.753	Camphor	0.05
26.118	Citronellal	0.08
26.308	Camphene hydrate	0.05
26.886	Isoborneol	0.02
27.175	trans-beta-Terpineol	0.01
27.305	Rose furan oxide	0.11
27.472	Borneol	0.74
28.079	Terpinen-4-ol	0.09
28.493	Cryptone	0.03
29.081	alpha-Terpineol	0.35
29.866	Decanal	0.23
31.224	Citronellol	0.14
31.355	Bornyl formate	0.02
31.725	Unidentified	0.02
32.006	Neral	0.24
32.750	Unidentified	0.02
32.829	Geraniol	0.17
33.067	Piperitone	0.04

Chromatogram 98401-27



This report is provided as a courtesy to our customers for their evaluation only. Any publishing, copying, use, dissemination, or distribution of this report, including online, without the express written permission of Shay and Company is strictly prohibited. To inquire about licensing analytical reporting services, please contact orders@shayandcompany.com

R.Time	Name	Area%
34.023	Geranial	0.43
34.702	Phellandral	0.02
35.147	Bornyl acetate	0.07
35.300	Isobornyl acetate	0.01
35.539	Thymol	0.01
35.730	2-Undecanone	0.42
36.079	Unidentified	0.01
36.405	2-Undecanol	0.03
36.802	4-Vinyl guaiaacol	0.01
38.556	delta-Elemene	0.10
39.334	alpha-Cubebene	0.02
39.484	Citronellyl acetate	0.06
40.069	Neryl acetate	0.01
40.287	Unidentified	0.01
40.721	Cyclosativene + Isoledene	0.26
41.205	alpha-Copaene	0.45
41.346	Geranyl acetate	0.25
41.615	Elemene isomer	0.02
41.988	beta-Cubebene	0.06
42.098	beta-Elemene	0.66
42.931	alpha-Funebrene	0.21
43.993	beta-Ylangene + beta-Caryophyllene	0.08
44.629	gamma-Elemene	0.23
44.859	trans-alpha-Bergamotene	0.09
44.996	Unidentified	0.01
45.338	cis-beta-Farnesene	0.02
45.746	Unidentified + Unidentified	0.11
46.114	trans-beta-Farnesene	0.45
46.260	alpha-Humulene	0.02
46.379	Unidentified	0.01
46.527	Alloaromadendrene	0.23
47.368	Selina-4,11-diene	0.16
47.471	trans-Cadina-1(6),4-diene	0.26
47.643	gamma-Curcumene	0.23
47.866	Ar-Curcumene	6.54
48.064	Aristolochene	0.22
48.333	beta-Selinene	0.14
48.518	cis,cis-alpha-Farnesene + Valencene	0.18
48.819	alpha-Zingiberene	28.96
48.970	trans-Muurola-4(14),5-diene	2.12
49.321	trans,trans-alpha-Farnesene	4.56
49.534	beta-Bisabolene	5.54
49.748	gamma-Cadinene	0.34
49.943	Cubebol	0.07
50.164	delta-Cadinene + (-)-alpha-Panasinsen	0.54
50.316	cis-Calamenene	0.02
50.503	beta-Sesquiphellandrene	9.72
50.646	trans-gamma-Bisabolene	0.29
51.546	Unidentified	0.13
51.745	Unidentified	0.03
51.882	Elemol	0.34
52.241	cis-Sesquisabinene hydrate	0.14
52.513	Germacrene B	0.34
52.639	trans-Nerolidol	0.37
53.594	ar-Tumerol	0.03
54.352	trans-Sesquisabinene hydrate	0.18
55.130	Unidentified	0.03
55.743	Zingiberenol analogue	0.39
56.124	Unidentified	0.04
56.192	10-epi-gamma-Eudesmol	0.07
56.417	Unidentified	0.05
56.521	Unidentified	0.03
56.640	Unidentified	0.19

R.Time	Name	Area%
56.713	Zingiberenol analogue	0.28
57.428	epi-alpha-Cadinol	0.03
58.031	alpha-Eudesmol	0.32
58.225	Unidentified	0.13
58.566	Unidentified	0.03
58.889	beta-Bisabolol	0.07
59.148	Unidentified	0.03
59.798	Unidentified + Unidentified	0.32
60.025	Unidentified	0.03
60.247	(2Z,6Z)-Farnesol	0.20
62.600	Unidentified	0.02
66.248	Unidentified	0.09
69.127	Unidentified	0.03
69.376	Unidentified	0.10
72.171	meta-Camphorene	0.03
73.488	Geranyl-para-cymene	0.09
74.791	Geranyl-alpha-terpinene	0.07
85.928	Thunbergol	0.12
		100.00