

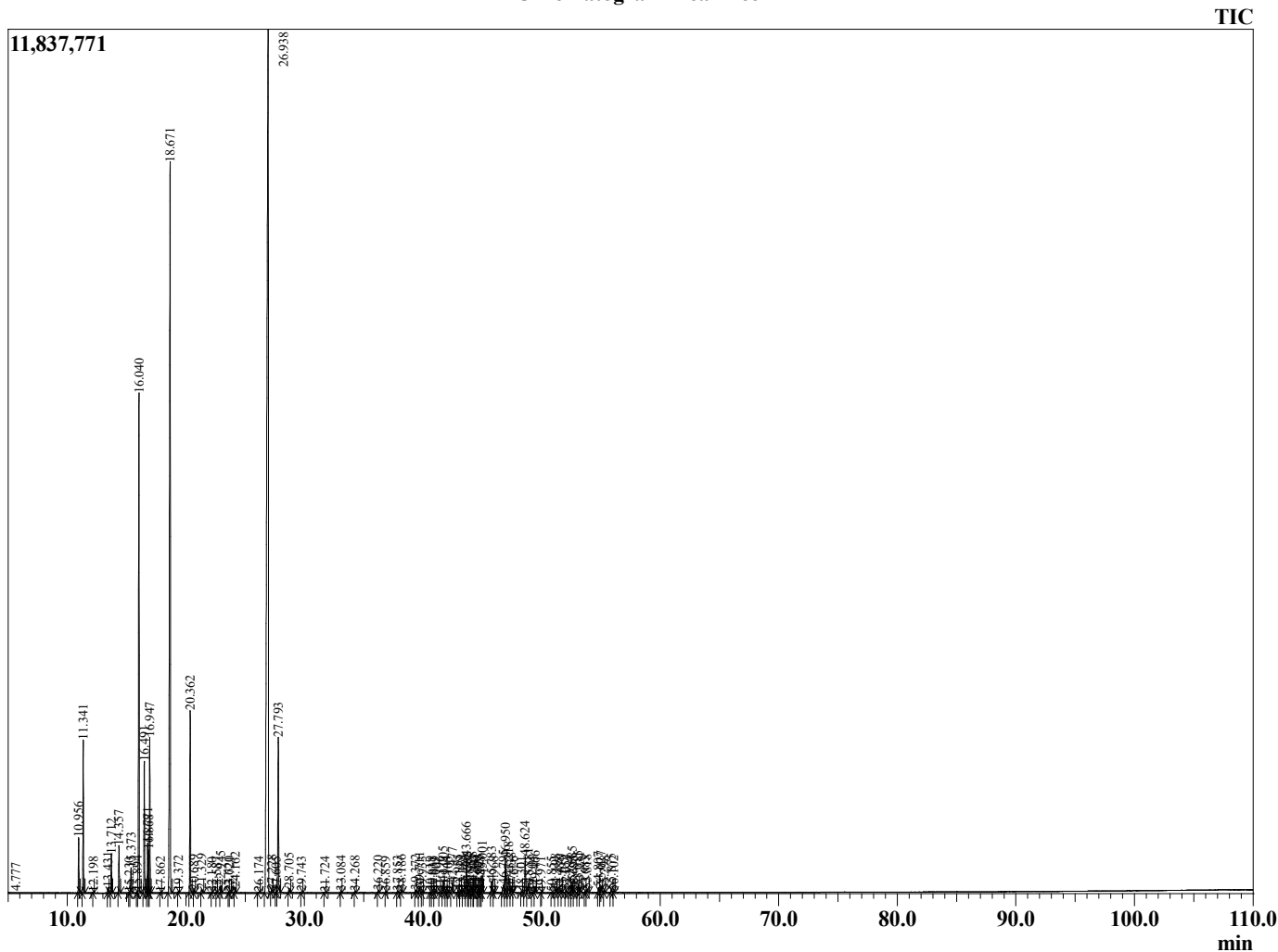
Sample Information

Analyzed by : AG
 Analyzed : 8/11/2023 2:24:12 PM
 Sample Type : Essential Oil
 Sample Name : Tea Tree
 Injection Volume : 0.10
 Lot Number : 12659
 Instrument ID : GC-2

Peak Report TIC

R.Time	Name	Area%
3.751	2-Methylbutanal	0.01
4.777	Isobutyric acid	0.01
10.956	alpha-Phellandrene	0.91
11.341	alpha-Pinene	2.55
12.198	Camphene	0.01
13.431	Sabinene	0.10
13.712	beta-Pinene	0.70
14.357	Myrcene	0.85
15.230	para-Mentha-1(7),8-diene	0.01
15.373	alpha-Phellandrene	0.47
15.894	1,4-Cineole	0.03
16.040	alpha-Terpinene	10.31
16.491	para-Cymene	2.49
16.771	Limonene	0.96
16.868	beta-Phellandrene	0.73
16.947	1,8-Cineole	3.01
17.862	trans-beta-Ocimene	0.01
18.671	gamma-Terpinene	19.80
19.372	trans-Sabinene hydrate	0.03
20.362	Terpinolene	3.77
20.689	Dehydro-para-cymene	0.06
21.329	Linalool	0.11
22.180	1,3,8-p-Menthatriene	0.01
22.587	Fenchol	0.01
22.945	cis-para-Menth-2-en-1-ol	0.15
23.620	Unidentified	0.01
23.721	Terpin-3-en-1-ol	0.02
24.162	Menthenol analog	0.12
26.174	Unidentified	0.02
26.938	Terpinen-4-ol	40.88
27.228	para-Cymen-8-ol	0.05
27.605	Unidentified	0.02
27.793	alpha-Terpineol	3.60
28.705	cis-Piperitol	0.10
29.743	Unidentified	0.02
31.724	Piperitone	0.02
33.084	cis-Ascidol glycol	0.04
34.268	trans-Ascidol glycol	0.04
36.220	Unidentified	0.05
36.859	delta-Elemene	0.02
37.853	alpha-Cubebene	0.04
38.186	3-Allyl-6-methoxyphenol	0.06
39.372	Isoledene	0.06
39.711	alpha-Copaene	0.14
39.933	Guaia-6,9-diene	0.02
40.619	beta-Elemene	0.02
40.831	Unidentified	0.02
41.009	Unidentified	0.03
41.396	Unidentified	0.02
41.705	alpha-Gurjunene	0.26
41.944	beta-Maaliene	0.03
42.105	gamma-Gurjunene	0.02
42.477	beta-Caryophyllene	0.26
42.955	gamma-Maaliene	0.06
43.148	Calarene	0.02
43.384	alpha-Maaliene	0.06
43.666	Alloaromadendrene	0.91
43.765	Unidentified	0.09
43.887	beta-Selinene	0.04
44.128	alpha-Guaiene	0.13
44.240	Unidentified	0.02
44.337	Cadina-3,5-diene	0.09

Chromatogram Tea Tree



This report is provided as a courtesy to our customers for their evaluation only.

R.Time	Name	Area%
44.600	Valerna-4,7(11)-diene	0.03
44.725	alpha-Humulene	0.07
44.868	Unidentified	0.02
45.001	Alloaromodendrene	0.42
45.783	Cadina-1(6),4-diene	0.29
45.968	gamma-Muurolene	0.03
46.795	beta-Selinene	0.31
46.950	Viridiflorene	0.89
47.218	Bicyclogermacrene	0.43
47.438	alpha-Muurolene	0.12
47.626	Unidentified	0.01
48.301	gamma-Muurolene	0.02
48.624	delta-Cadinene	0.88
48.881	Zonarene	0.31
49.204	Selina-4(15),7(11)-diene	0.01
49.466	trans-Cadina-1,4-diene	0.15
49.971	alpha-Calacorene	0.01
50.855	Intermedeol	0.01
51.198	Viridiflorol	0.09
51.488	Unidentified	0.01
51.670	Unidentified	0.04
52.054	Unidentified	0.07
52.384	Unidentified	0.02
52.585	Unidentified	0.29
52.695	Unidentified	0.02
53.085	Viridiflorol	0.17
53.231	Cubeban-11-ol	0.13
53.683	Ledol	0.04
53.818	Rosifoliol	0.08
54.807	Eudesm-5-en-11-ol	0.13
55.027	Epicubenol	0.17
55.298	Unidentified	0.05
55.875	Epicubenol	0.10
56.102	alpha-Muurolol	0.03
		100.00