

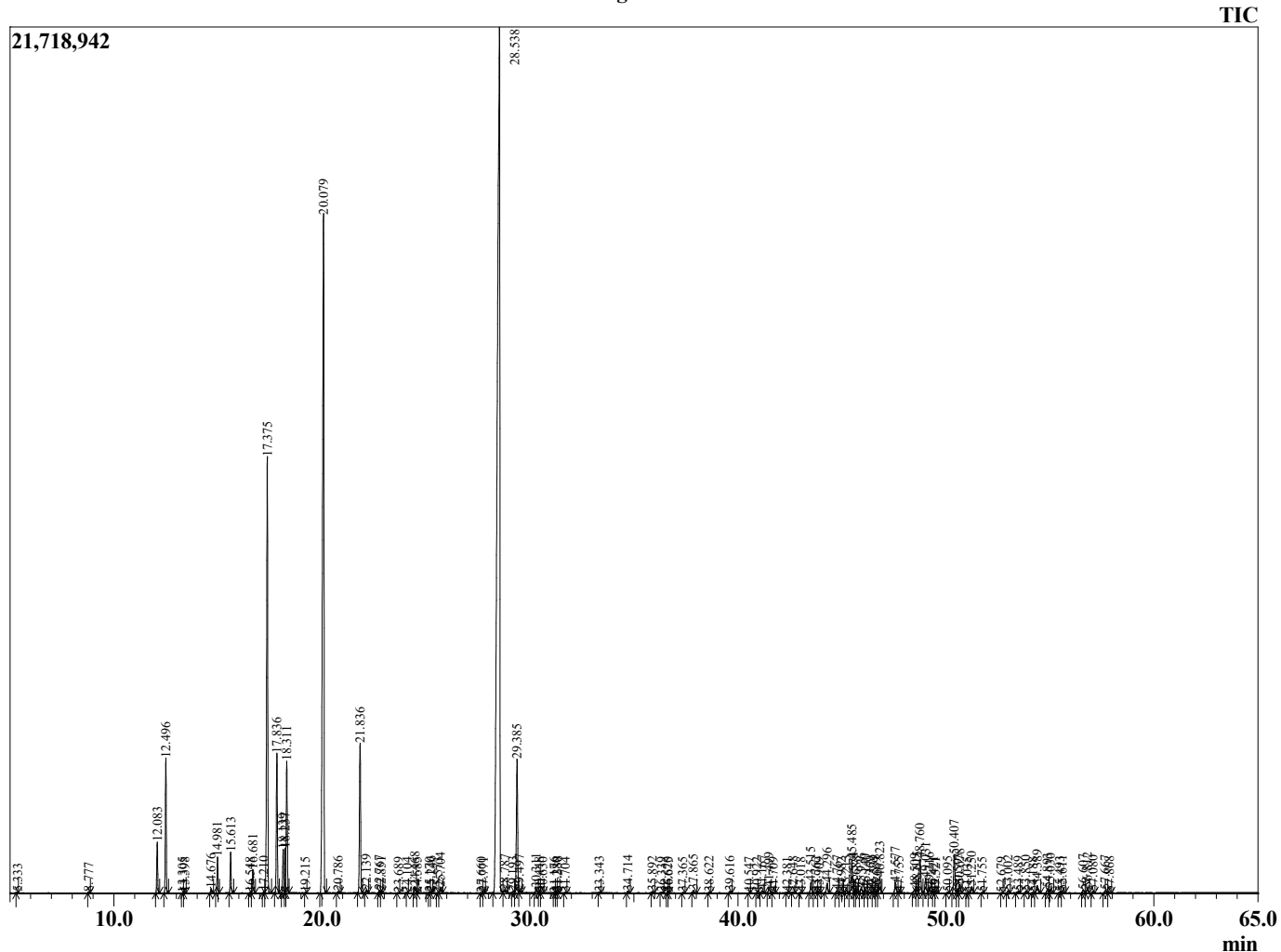
Sample Information

Analyzed by : KS  
 Analyzed : 9/27/2023 8:42:29 AM  
 Sample Type : Essential Oil  
 Sample Name : Tea Tree  
 Injection Volume : 0.10 µL  
 Lot Number : 12750  
 Instrument ID : GC-3

Peak Report TIC

R.Time	Name	Area%
4.107	3-Methylbutanal	0.00
4.211	2-Methylbutanal	0.01
5.333	Unidentified	0.01
8.777	Hex-(3Z)-enol	0.02
12.083	alpha-Thujene	0.88
12.496	alpha-Pinene	2.39
13.305	alpha-Fenchene	0.00
13.398	Camphene	0.01
14.676	Sabinene	0.08
14.981	beta-Pinene	0.68
15.613	Myrcene	0.77
16.548	Unidentified	0.01
16.681	alpha-Phellandrene	0.47
17.210	1,4-Cineole	0.03
17.375	alpha-Terpinene	9.64
17.836	para-Cymene	2.80
18.139	Limonene	0.91
18.237	beta-Phellandrene	0.80
18.311	1,8-Cineole	2.75
19.215	trans-beta-Ocimene	0.01
20.079	gamma-Terpinene	19.32
20.786	trans-Sabinene hydrate	0.03
21.836	Terpinolene	3.35
22.139	para-Cymenene	0.06
22.767	Linalool	0.06
22.851	cis-Sabinene hydrate	0.03
23.689	Unidentified	0.01
24.104	alpha-Fenchol	0.00
24.468	cis-para-Menth-2-en-1-ol	0.14
24.585	Unidentified	0.01
25.170	Unidentified	0.01
25.246	Terpin-3-en-1-ol	0.02
25.573	Unidentified	0.01
25.704	trans-para-Menth-2-en-1-ol	0.12
27.660	Unidentified	0.01
27.771	Borneol	0.01
28.538	Terpinen-4-ol	43.40
28.787	para-Cymen-8-ol	0.06
29.193	Unidentified	0.03
29.385	alpha-Terpineol	3.23
29.497	cis-Piperitol	0.05
30.311	trans-Piperitol	0.10
30.448	Unidentified	0.01
30.630	Unidentified	0.01
31.176	Unidentified	0.01
31.280	Unidentified	0.01
31.338	Unidentified	0.01
31.704	Unidentified	0.01
33.343	Piperitone	0.02
34.714	cis-Ascaridole glycol	0.04
35.892	trans-Ascaridole glycol	0.03
36.339	Carvacrol isomer	0.01
36.620	Unidentified	0.01
36.675	Unidentified	0.00
37.365	Unidentified	0.01
37.865	Unidentified	0.06
38.622	delta-Elementene	0.02
39.616	alpha-Cubebene	0.04
40.547	Unidentified	0.00
40.922	Unidentified	0.01
41.167	Isoledene	0.06
41.499	alpha-Copaene	0.13

Chromatogram 98401-13



This report is provided as a courtesy to our customers for their evaluation only. Any publishing, copying, use, dissemination, or distribution of this report, including on-line, without the express written permission of Shay and Company is strictly prohibited. To inquire about licensing analytical reporting services, please contact orders@shayandcompany.com

R.Time	Name	Area%
41.709	Unidentified	0.02
42.381	beta-Elemene	0.01
42.648	Unidentified	0.02
43.018	Methyleugenol	0.01
43.515	alpha-Gurjunene	0.27
43.762	beta-Maaliene	0.02
43.909	Unidentified	0.01
44.296	beta-Caryophyllene	0.27
44.767	gamma-Maaliene	0.06
44.982	beta-Gurjunene (calarene)	0.02
45.213	alpha-Maaliene	0.06
45.485	Aromadendrene	0.90
45.574	Unidentified	0.09
45.688	Unidentified	0.04
45.936	alpha-Guaiene	0.13
46.140	trans-Murrola-3,5-diene	0.09
46.369	6,9-Guaiadiene	0.03
46.539	alpha-Humulene	0.06
46.669	Unidentified	0.01
46.823	Alloaromodendrene	0.43
47.577	10-beta-H-Cadina-1(6),40diene	0.29
47.755	trans-Cadina-1(6),4-diene	0.02
48.509	delta-Selinene	0.12
48.615	beta-Selinene	0.17
48.760	Viridiflorene	0.92
49.031	Bicyclogermacrene	0.43
49.216	alpha-Murolene	0.13
49.421	Unidentified	0.02
49.521	Unidentified	0.02
50.095	gamma-Cadinene	0.02
50.407	delta-Cadinene	0.97
50.593	trans-Calamenene	0.10
50.678	Zonarene	0.23
51.035	Unidentified	0.01
51.250	trans-Cadina-1,4-diene	0.16
51.755	alpha-Calacorene	0.01
52.679	Unidentified	0.01
53.002	Unidentified	0.06
53.489	Palustrol	0.05
53.850	Spathulenol	0.05
54.188	Unidentified	0.01
54.389	Globulol	0.22
54.893	Viridiflorol	0.12
55.030	Cubeban-11-ol	0.09
55.493	Ledol	0.03
55.611	Rosifoliol	0.04
56.607	Eudesm-5-en-11-ol	0.08
56.812	1,10-di-epi-Cubenol	0.12
57.080	Unidentified	0.04
57.667	tau-Cadinol	0.07
57.868	delta-Cadinol	0.02
		100.00