

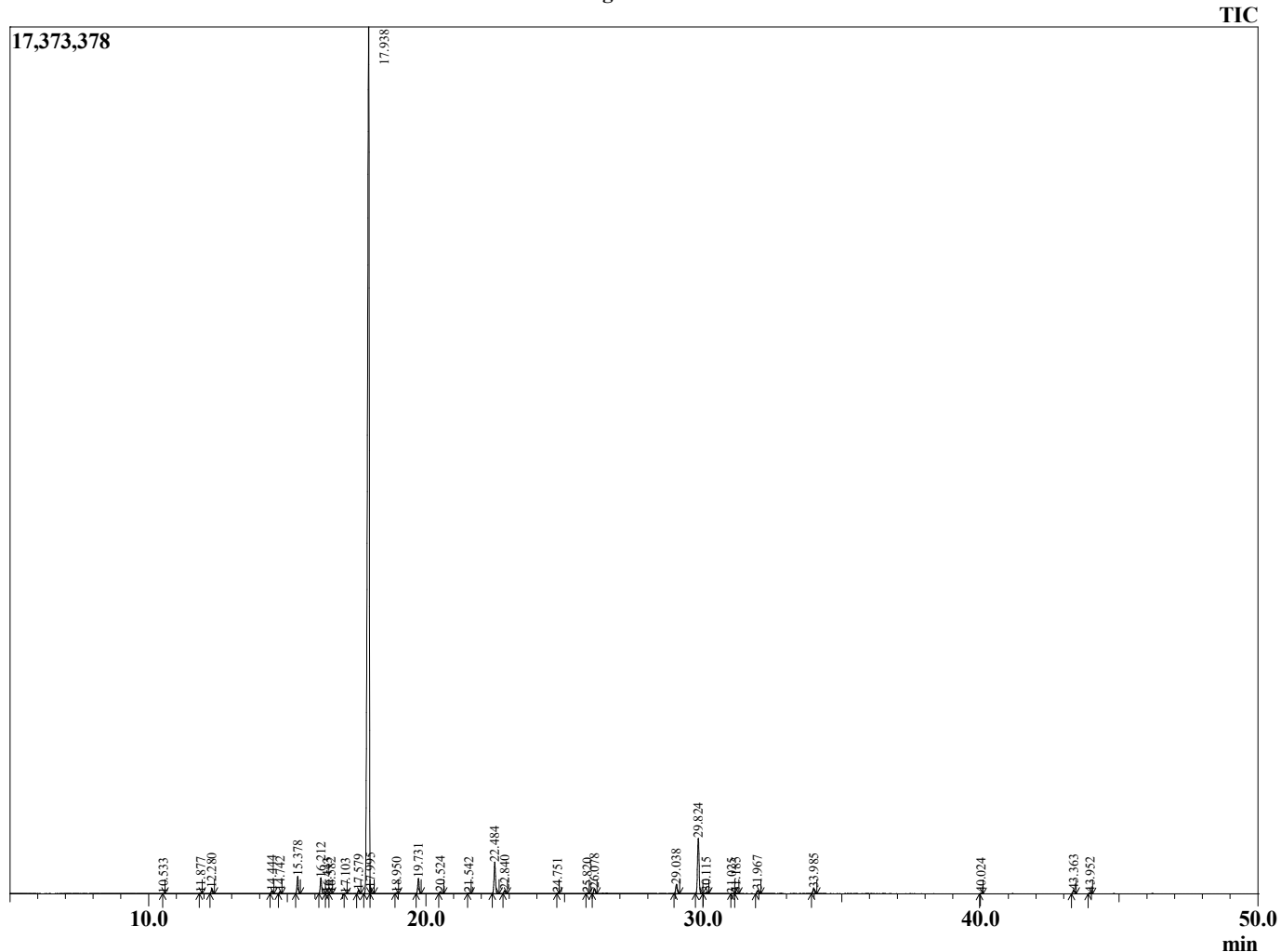
Sample Information

Analyzed by : JS
 Analyzed : 5/29/2024 4:37:14 PM
 Sample Type : Essential Oil
 Sample Name : Sweet Orange 10x
 Injection Volume : 0.10 µL
 Lot Number : 12659
 Instrument ID : GC-3

Peak Report TIC

R.Time	Name	Area%
10.533	Nonane	0.01
11.877	alpha-Thujene	0.03
12.280	alpha-Pinene	0.32
14.444	Sabinene	0.17
14.742	beta-Pinene	0.15
15.378	Myrcene	1.22
16.212	Octanal	1.19
16.443	alpha-Phellandrene	0.03
16.582	delta-3-Carene	0.04
17.103	alpha-Terpinene	0.02
17.579	para-Cymene	0.28
17.938	Limonene	84.75
17.995	beta-Phellandrene	0.26
18.950	trans-beta-Ocimene	0.06
19.731	gamma-Terpinene	1.14
20.524	1-Octanol	0.15
21.542	Terpinolene	0.03
22.484	Linalool	2.50
22.840	Nonanal	0.24
24.751	cis-Limonene oxide	0.01
25.820	Isopulegol	0.03
26.078	Citronellal	0.41
29.038	alpha-Terpineol	0.82
29.824	Decanal	4.71
30.115	Octyl acetate	0.11
31.025	Nerol	0.02
31.185	Citronellol	0.07
31.967	Neral	0.29
33.985	Geranial	0.46
40.024	Neryl acetate	0.03
43.363	Dodecanal	0.32
43.952	beta-Caryophyllene	0.11
		100.00

Chromatogram 98401-12



This report is provided as a courtesy to our customers for their evaluation only. Any publishing, copying, use, dissemination, or distribution of this report, including on-line, without the express written permission of Shay and Company is strictly prohibited. To inquire about licensing analytical reporting services, please contact orders@shayandcompany.com.