



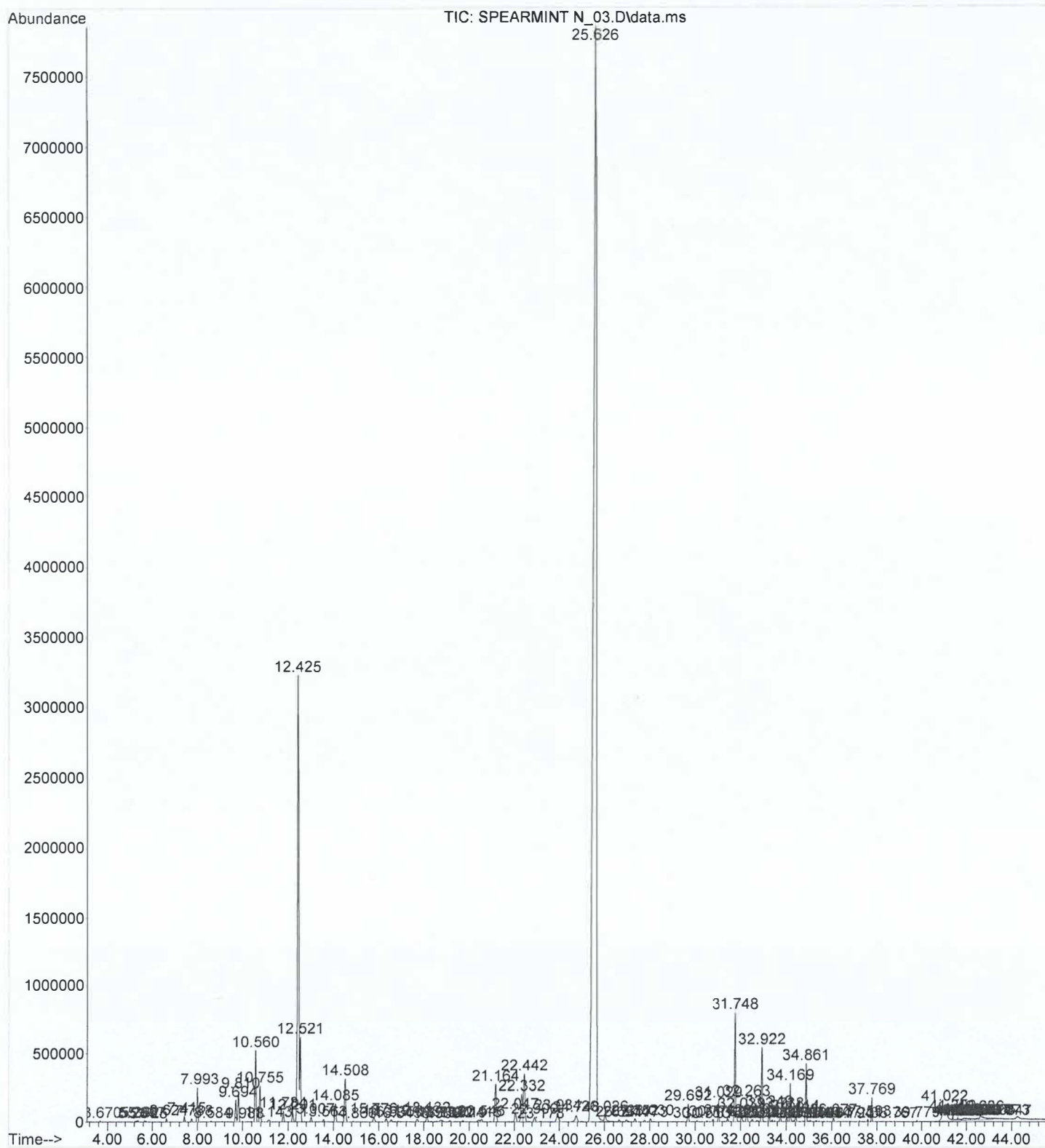
SPEARMINT ESSENTIAL OIL

CHEMICAL COMPOSITION (GC-MS)

LOT NO. 13065

PEAK RT	COMPOUND	CONTENT (%)	SPECIFICATION
7.993	ALPHA PINENE	0.60	
9.810	BETA PINENE	0.63	
10.755	3-OCTANOL	0.74	
12.425	LIMONENE	10.58	10 - 20 %
22.442	DIHYDROCARVONE	1.41	
31.748	B-BURBONENE	2.23	
32.263	CIS-JASMONE	0.41	
25.626	L-CARVONE	64.84	60 – 75 %
32.922	CARYOPHYLLENE	1.39	

File : C:\msdchem\1\data\2025\02-13-25\SPEARMINT N_03.D
Operator : SS
Acquired : 14 Feb 2025 00:00 using AcqMethod METHOD_7.M
Instrument : GCMS
Sample Name: SPEARMINT FARWEST NATIVE
Misc Info : RCB
Vial Number: 3



Area Percent Report

Data Path : C:\msdchem\1\data\2025\02-13-25\
 Data File : SPEARMINT N_03.D
 Acq On : 14 Feb 2025 00:00
 Operator : SS
 Sample : SPEARMINT FARWEST NATIVE
 Misc : LOT 13065
 ALS Vial : Sample Multiplier: 1

Integration Parameters: autoint1.e
 Integrator: ChemStation

Method : C:\msdchem\1\methods\METHOD_7.M
 Title : Eoil Qualitative

Signal : TIC: SPEARMINT N_03.D\data.ms

peak #	R.T. min	first scan	max scan	last scan	PK TY	peak height	corr. area	corr. % max.	% of total
1	3.670	96	103	112	PV 2	9176	148547	0.02%	0.012%
2	5.231	360	376	382	BV 4	5307	109709	0.01%	0.009%
3	5.299	382	388	394	VV 5	10089	199834	0.03%	0.017%
4	5.362	394	399	410	VV 2	10738	259093	0.03%	0.022%
5	5.657	442	450	458	BV 2	10211	236911	0.03%	0.020%
6	5.725	458	462	475	VV 2	4923	127047	0.02%	0.011%
7	6.624	603	619	638	VV 2	27134	717287	0.09%	0.060%
8	7.415	740	757	773	BV 3	44659	1213786	0.16%	0.101%
9	7.738	803	814	827	PV 3	24658	690337	0.09%	0.057%
10	7.993	838	858	873	PV 2	249743	7234940	0.93%	0.602%
11	8.584	943	962	972	VV 6	7546	228464	0.03%	0.019%
12	9.694	1136	1156	1166	VV	160390	5040792	0.65%	0.420%
13	9.810	1166	1176	1193	VV	224134	7524380	0.97%	0.626%
14	9.988	1193	1207	1226	PB 2	3771	110736	0.01%	0.009%
15	10.560	1286	1307	1327	PV	522044	17168986	2.20%	1.429%
16	10.755	1327	1341	1371	PV 2	264025	8884685	1.14%	0.740%
17	11.143	1382	1409	1428	PV 2	13808	844650	0.11%	0.070%
18	11.784	1496	1521	1537	BV 3	81570	2912654	0.37%	0.242%
19	12.201	1574	1594	1610	BV 2	66273	2470666	0.32%	0.206%
20	12.425	1610	1633	1643	VV	3224892	127044151	16.31%	10.575%
21	12.521	1643	1650	1670	VV 2	618383	21856951	2.81%	1.819%
22	13.007	1717	1735	1750	PB 2	37028	1272425	0.16%	0.106%
23	13.563	1807	1832	1846	BB 6	17288	625195	0.08%	0.052%
24	14.085	1909	1923	1940	VV 2	134064	5155560	0.66%	0.429%
25	14.508	1982	1997	2026	BV 3	316087	12665579	1.63%	1.054%
26	14.866	2044	2060	2072	BV 7	5097	198492	0.03%	0.017%
27	15.776	2205	2219	2240	VB 7	38129	1721761	0.22%	0.143%
28	16.319	2293	2314	2331	BV 6	25300	1045101	0.13%	0.087%
29	16.535	2331	2351	2377	PV 10	16151	743231	0.10%	0.062%
30	16.845	2394	2405	2417	PV 4	5305	211076	0.03%	0.018%
31	17.693	2531	2554	2576	BV 10	18811	957790	0.12%	0.080%
32	18.132	2598	2630	2648	BV 3	44444	1946818	0.25%	0.162%
33	18.568	2696	2707	2719	VV 6	4285	170203	0.02%	0.014%
34	18.737	2719	2736	2747	VV 9	12809	781562	0.10%	0.065%
35	18.809	2747	2749	2765	VV 7	9100	305971	0.04%	0.025%
36	19.142	2793	2807	2831	VV 7	8832	400516	0.05%	0.033%
37	19.719	2879	2908	2921	BV 6	8899	362662	0.05%	0.030%
38	20.415	3010	3029	3042	BV 8	12296	797097	0.10%	0.066%
39	20.546	3042	3052	3069	VV 5	19752	918104	0.12%	0.076%
40	21.164	3141	3160	3190	VV 2	276560	12950664	1.66%	1.078%

41	22.047	3298	3315	3337	VV	5	73657	3479595	0.45%	0.290%
42	22.332	3337	3364	3373	PV	3	202595	9773488	1.25%	0.814%
43	22.442	3373	3384	3406	VV	3	349299	16936078	2.17%	1.410%
44	22.900	3448	3464	3490	PV	7	35867	1725793	0.22%	0.144%
45	23.178	3494	3512	3529	BB	8	4496	232858	0.03%	0.019%
46	23.934	3619	3644	3676	PV	6	63049	4141830	0.53%	0.345%
47	24.748	3738	3787	3814	BV	10	49899	3449973	0.44%	0.287%
48	25.626	3868	3940	3996	PV		7853498	778860697	100.00%	64.833%
49	26.026	3996	4010	4049	VV	4	49940	2749203	0.35%	0.229%
50	26.651	4104	4119	4138	PV	6	14273	616306	0.08%	0.051%
51	26.974	4163	4176	4189	VV	2	15600	662759	0.09%	0.055%
52	27.352	4228	4242	4265	PV	7	25361	971327	0.12%	0.081%
53	27.773	4293	4315	4331	BV	6	13276	535137	0.07%	0.045%
54	28.030	4347	4360	4373	VV	3	24945	870295	0.11%	0.072%
55	29.692	4636	4651	4667	BV	2	131785	4181592	0.54%	0.348%
56	30.075	4704	4718	4730	BV	6	8290	271610	0.03%	0.023%
57	30.513	4764	4794	4809	BB	6	4944	161955	0.02%	0.013%
58	30.774	4819	4840	4861	BV	5	18576	576846	0.07%	0.048%
59	31.029	4861	4884	4902	PV	2	152246	4480664	0.58%	0.373%
60	31.428	4940	4954	4967	VV	6	26690	842272	0.11%	0.070%
61	31.748	4990	5010	5040	BV	2	786839	26748749	3.43%	2.227%
62	31.968	5040	5048	5051	VV	4	3454	79931	0.01%	0.007%
63	32.039	5051	5061	5088	VV	6	74263	2461344	0.32%	0.205%
64	32.263	5088	5100	5123	VV	2	164482	4914395	0.63%	0.409%
65	32.512	5123	5143	5159	VV	9	17348	712584	0.09%	0.059%
66	32.714	5166	5179	5185	VV	6	10262	327816	0.04%	0.027%
67	32.790	5185	5192	5201	VV	5	6290	176844	0.02%	0.015%
68	32.922	5201	5215	5229	VV	2	537936	16717884	2.15%	1.392%
69	33.249	5251	5272	5285	BV	2	88561	2489596	0.32%	0.207%
70	33.380	5285	5295	5304	VV	6	12798	352610	0.05%	0.029%
71	33.479	5304	5313	5326	VB	7	6462	169192	0.02%	0.014%
72	33.738	5347	5358	5371	VV	2	74556	2112387	0.27%	0.176%
73	34.013	5390	5406	5420	PV	3	33204	1062550	0.14%	0.088%
74	34.169	5420	5433	5453	VV		278646	7323268	0.94%	0.610%
75	34.335	5453	5462	5467	VV	8	9112	272180	0.03%	0.023%
76	34.414	5467	5476	5494	VV	4	56948	1744185	0.22%	0.145%
77	34.738	5521	5532	5540	BV	4	4681	128115	0.02%	0.011%
78	34.861	5540	5554	5569	PV		424052	11969908	1.54%	0.996%
79	34.974	5569	5574	5580	VV	7	4763	150756	0.02%	0.013%
80	35.054	5580	5588	5597	VV	2	10917	333444	0.04%	0.028%
81	35.315	5616	5633	5647	VV	10	7961	352921	0.05%	0.029%
82	35.424	5647	5652	5669	VV	6	3945	125077	0.02%	0.010%
83	35.814	5699	5720	5732	PV	3	3675	90691	0.01%	0.008%
84	36.077	5750	5767	5790	BB	4	30324	823065	0.11%	0.069%
85	36.794	5876	5892	5901	BV	3	3799	81569	0.01%	0.007%
86	37.231	5950	5968	5974	BV	4	5257	104449	0.01%	0.009%
87	37.593	6016	6032	6043	BV	4	18886	405077	0.05%	0.034%
88	37.769	6053	6062	6082	VV	2	176614	3816516	0.49%	0.318%
89	38.767	6223	6237	6244	PV	4	4954	78931	0.01%	0.007%
90	39.779	6409	6414	6425	VV	4	12415	199603	0.03%	0.017%
91	41.022	6578	6631	6689	PV	6	124621	16331392	2.10%	1.359%
92	41.390	6689	6695	6713	VV		51707	1385474	0.18%	0.115%
93	41.524	6713	6718	6721	VV	5	12417	319779	0.04%	0.027%
94	41.610	6721	6733	6737	VV	7	25463	726965	0.09%	0.061%
95	41.645	6737	6740	6745	VV	7	11932	311273	0.04%	0.026%
96	41.707	6745	6750	6760	VV	7	13385	551809	0.07%	0.046%

97	41.784	6760	6764	6767	VV 6	11133	228328	0.03%	0.019%
98	41.888	6767	6782	6784	VV 6	18342	898795	0.12%	0.075%
99	41.912	6784	6786	6795	VV 10	18969	625838	0.08%	0.052%
100	41.998	6795	6801	6816	VV 10	19156	1072148	0.14%	0.089%
101	42.130	6816	6824	6830	VV 10	17182	643885	0.08%	0.054%
102	42.178	6830	6833	6835	VV 4	13956	243905	0.03%	0.020%
103	42.259	6835	6847	6864	VV 4	14017	1127310	0.14%	0.094%
104	42.366	6864	6866	6870	VV 5	12684	272374	0.03%	0.023%
105	42.492	6881	6888	6895	VV 5	14438	581219	0.07%	0.048%
106	42.636	6895	6913	6956	VV 5	39261	4076081	0.52%	0.339%
107	42.897	6956	6958	6968	VV 5	14276	470373	0.06%	0.039%
108	42.974	6968	6972	6974	VV 5	11132	246613	0.03%	0.021%
109	43.019	6974	6980	6982	VV 6	11803	272511	0.03%	0.023%
110	43.135	6990	7000	7009	VV 6	11442	628263	0.08%	0.052%
111	43.773	7106	7112	7121	VV 6	3947	129775	0.02%	0.011%
112	43.847	7121	7124	7142	VB 6	3631	96156	0.01%	0.008%

Sum of corrected areas: 1201340596

METHOD_7.M Mon Feb 17 12:53:41 2025