



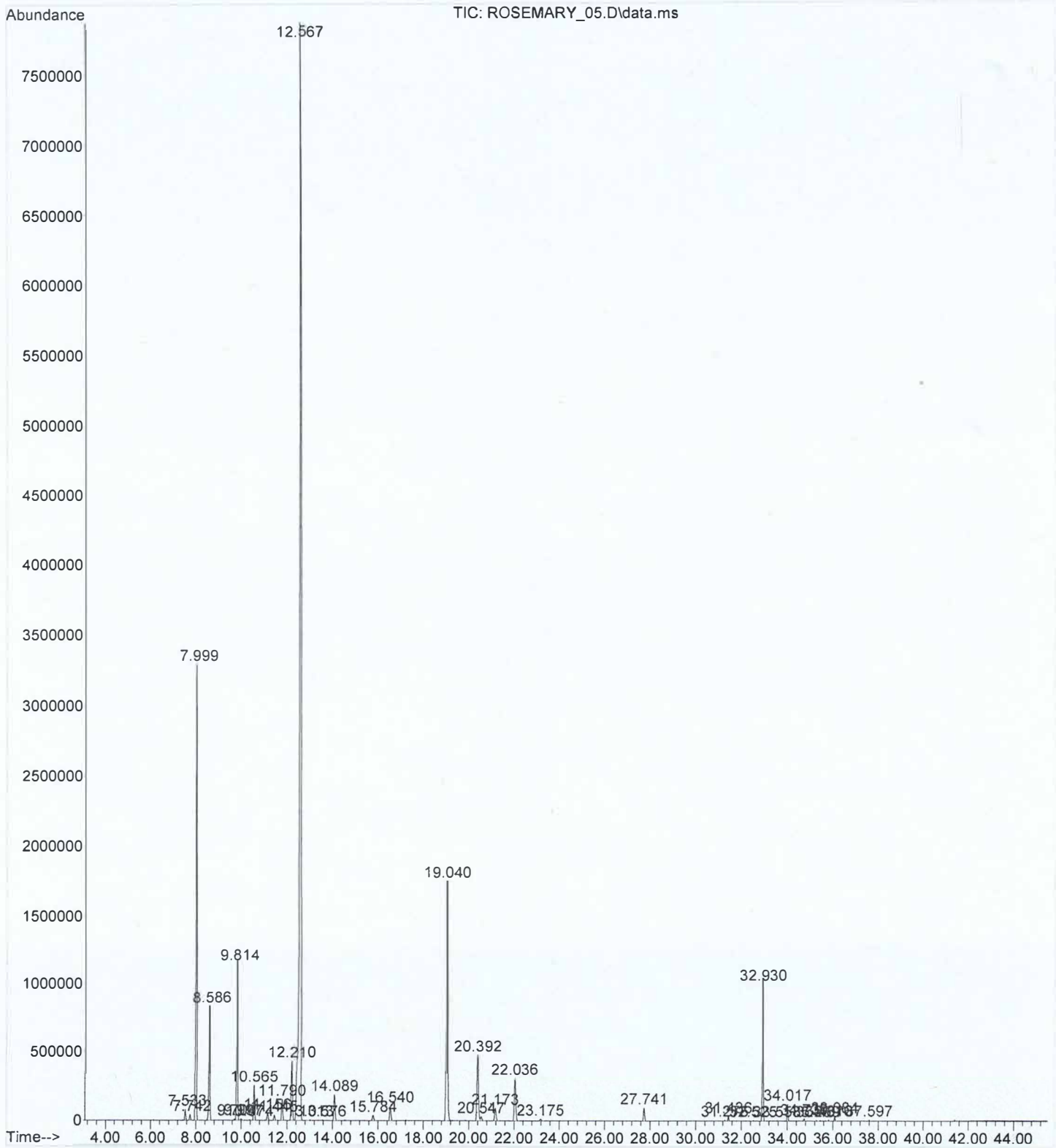
**ROSEMARY OIL**

**CHEMICAL COMPOSITION (GC-MS)**

**LOT NO. 12943**

<b>PEAK RT</b>	<b>COMPOUND</b>	<b>CONTENT (%)</b>	<b>SPECIFICATION</b>
7.999	ALPHA PINENE	12.82	9 – 14 %
8.586	CAMPHENE	3.46	2.5 – 6 %
9.814	BETA PINENE	5.03	4 -9 %
10.565	MYRCENE	1.08	1 - 2 %
12.210	PARA CYMENE	2.25	0.5 – 2.5 %
12.410	LIMONENE	2.20	1.5 – 4 %
12.567	1, 8 CINEOLE	48.20	38 – 55 %
19.04	CAMPHOR	10.70	5 – 15 %
20.39	BORNEOL	2.88	1 – 5 %
22.036	ALPHA TERPINEOL	1.80	1 – 2.5 %
27.741	BORNEYL ACETATE	0.45	0.1 – 1.6 %

File : C:\msdchem\1\data\2024\08-06-24\ROSEMARY\_05.D  
Operator : SS  
Acquired : 6 Aug 2024 15:50 using AcqMethod METHOD\_7.M  
Instrument : GCMS  
Sample Name: ROSEMARY OIL  
Misc Info : 12943  
Vial Number: 5



## Area Percent Report

Data Path : C:\msdchem\1\data\2024\08-06-24\  
Data File : ROSEMARY\_05.D  
Acq On : 6 Aug 2024 15:50  
Operator : SS  
Sample : ROSEMARY OIL  
Misc : 12943  
ALS Vial : 5 Sample Multiplier: 1

Integration Parameters: autoint1.e  
Integrator: ChemStation

Method : C:\msdchem\1\methods\METHOD\_7.M  
Title : Oil Qualitative

Signal : TIC: ROSEMARY\_05.D\data.ms

peak #	R.T. min	first scan	max scan	last scan	PK TY	peak height	corr. area	corr. % max.	% of total
1	7.533	767	778	792	PB 2	78098	2182196	0.57%	0.288%
2	7.742	802	815	827	BB 3	39831	1096271	0.29%	0.145%
3	7.999	845	860	882	BV	3272922	97260106	25.32%	12.824%
4	8.586	941	962	979	VV	829911	26281199	6.84%	3.465%
5	9.704	1146	1157	1163	BV 5	8653	248075	0.06%	0.033%
6	9.814	1163	1177	1197	VV	1142056	38171386	9.94%	5.033%
7	9.997	1197	1209	1222	PB 2	10888	342945	0.09%	0.045%
8	10.374	1265	1275	1284	BB 3	4060	125255	0.03%	0.017%
9	10.565	1293	1308	1324	BV 2	249718	8150058	2.12%	1.075%
10	11.156	1394	1411	1426	BB 2	50471	1926276	0.50%	0.254%
11	11.445	1448	1462	1478	BV 4	37732	1301241	0.34%	0.172%
12	11.790	1506	1522	1538	BB 4	148790	5340375	1.39%	0.704%
13	12.210	1577	1595	1615	BV 2	429411	17051440	4.44%	2.248%
14	12.567	1615	1658	1680	PV	7852249	384048177	100.00%	50.638%
15	13.013	1705	1736	1747	BV 6	4203	136300	0.04%	0.018%
16	13.576	1824	1834	1843	BV 5	4043	130896	0.03%	0.017%
17	14.089	1907	1924	1942	BV 3	183882	7052377	1.84%	0.930%
18	15.784	2204	2220	2239	BB 6	37712	1601654	0.42%	0.211%
19	16.540	2337	2352	2375	BV 4	102058	4041313	1.05%	0.533%
20	19.040	2768	2789	2823	BV	1745908	81171951	21.14%	10.703%
21	20.392	3007	3025	3043	BV 2	473813	21859364	5.69%	2.882%
22	20.547	3043	3052	3081	VV 7	28804	1357883	0.35%	0.179%
23	21.173	3142	3162	3185	BV 5	89134	4006358	1.04%	0.528%
24	22.036	3295	3313	3339	BV 4	300501	13633794	3.55%	1.798%
25	23.175	3499	3512	3537	BV 5	13135	592029	0.15%	0.078%
26	27.741	4295	4310	4327	BV 5	92865	3400923	0.89%	0.448%
27	31.275	4917	4927	4936	BV 3	5705	147563	0.04%	0.019%
28	31.436	4944	4955	4968	BB 4	30926	910195	0.24%	0.120%
29	32.525	5138	5146	5153	BB 4	3801	76944	0.02%	0.010%
30	32.930	5203	5217	5238	BV 2	983944	29441968	7.67%	3.882%
31	33.558	5314	5326	5337	BB 4	3629	72527	0.02%	0.010%
32	34.017	5394	5406	5419	PV 2	118301	3395699	0.88%	0.448%
33	34.739	5523	5533	5546	VV 5	16871	458367	0.12%	0.060%
34	35.269	5617	5625	5637	BV 5	4465	106331	0.03%	0.014%
35	35.437	5637	5655	5662	PB 3	4272	105605	0.03%	0.014%
36	35.816	5712	5721	5730	BB 4	9061	212213	0.06%	0.028%
37	36.084	5755	5768	5780	BB 3	31148	825693	0.21%	0.109%
38	37.597	6024	6032	6041	BB 5	8902	161032	0.04%	0.021%