

GC/MS Report

Item	Lot 12759
*ROSOFF1	
<i>Rosmarinus officinalis</i>	Analyst
Rosemary EO	KS
Date	
8/15/2024	

GC/MS Report
Components

Ret. Time	Component	Ret. Idx.	Conc. %	
4.514	2-Ethyl furan	701	0%	
5.844	Toluene	764	0%	
9.636	Cyclofenchene	881	0.06%	
10.580	2-Bornene	904	0.02%	
10.656	Bornylene	905	0.03%	
10.891	Unidentified	910	0.01%	
11.421	Hashishene	919	0.02%	
11.540	Tricyclene	922	1.44%	
11.689	alpha-Thujene	924	0.16%	
12.128	alpha-Pinene	932	23.1%	
12.411	beta-Fenchene	938	0.07%	
12.885	alpha-Fenchene	946	0.19%	
12.990	Camphene	948	7.93%	
13.174	Thuja-2,4(10)diene	952	0.03%	
14.226	Sabinene	971	0.03%	
14.529	beta-Pinene	977	3.82%	
14.725	Unidentified	980	0.01%	
14.836	Camphene isomer	982	0.02%	
14.907	3-Octanone	984	0.03%	
15.014	para-Menth-3-ene	986	0.01%	
15.153	Myrcene	988	2.82%	
15.592	3-Octanol	996	0.01%	
16.052	Pseudolimonene	1004	0.17%	
16.195	alpha-Phellandrene	1006	0.19%	
16.337	delta-3-Carene	1008	0.02%	
16.848	alpha-Terpinene	1016	0.32%	
17.011	ortho-Cymene	1019	0.01%	
17.336	para-Cymene	1024	2.08%	
17.642	Limonene	1028	3.77%	
17.851	1,8-Cineole	1032	20.14%	
18.026	cis-beta-Ocimene	1034	0.03%	
18.714	trans-beta-Ocimene	1045	0.01%	
19.475	gamma-Terpinene	1057	0.4%	
20.247	trans-Sabinene hydrate	1069	0.03%	
21.140	Camphenilone	1082	0%	
21.259	Terpinolene	1084	0.16%	
21.481	Fenchone	1088	0.01%	
21.588	para-Cymenene	1089	0.02%	
22.216	Linalool	1099	1.38%	
22.859	Unidentified	1108	0.01%	

GC/MS Report
Components

Ret. Time	Component	Ret. Idx.	Conc. %	
23.533	endo-Fenchol	1118	0.03%	
24.057	alpha-Campholenal	1126	0%	
24.313	Unidentified	1130	0.02%	
24.840	Nopinone	1137	0%	
25.011	trans-Pinocarveol	1140	0.02%	
25.512	Camphor	1147	19.18%	
25.982	trans-beta-Terpineol	1154	0.02%	
26.220	Isopulegol	1157	0.02%	
26.354	trans-Pinocamphone	1159	0.02%	
26.470	Pinocarvone	1161	0.02%	
26.546	Isoborneol	1162	0.03%	
27.035	delta-Terpineol	1169	0.14%	
27.146	Borneol	1171	2.27%	
27.421	Isopinocamphone	1175	0.01%	
27.604	cis-Carveol	1177	0.01%	
27.736	Terpinen-4-ol	1179	0.28%	
28.178	para-Cymen-8-ol	1186	0.02%	
28.500	Methyl salicylate	1191	0.02%	
28.757	alpha-Terpineol	1194	3.2%	
29.277	Bornyl formate isomer	1202	0.01%	
29.541	Verbenone	1206	1.06%	
30.366	Unidentified	1218	0.01%	
30.870	Citronellyl acetate	1225	0.01%	
31.000	Bornyl formate isomer	1227	0.01%	
32.491	Geraniol	1249	0.01%	
34.591	Thymol	1280	0%	
34.788	Bornyl acetate	1283	1.81%	
34.941	Isobornyl acetate	1285	0.02%	
35.709	Carvacrol	1296	0.01%	
37.357	Myrtenyl acetate	1321	0.01%	
38.316	Pulespenone	1336	0.01%	
39.206	Eugenol	1350	0.01%	
40.386	alpha-Ylangene	1368	0.03%	
40.804	alpha-Copaene	1374	0.02%	
42.389	Methyleugenol	1398	0%	
42.655	cis-beta-Caryophyllene	1402	0.01%	
43.602	beta-Caryophyllene	1418	2.66%	
44.128	Unidentified	1426	0.01%	
45.375	Geranylacetone	1446	0.01%	
45.471	Unidentified	1448	0.01%	

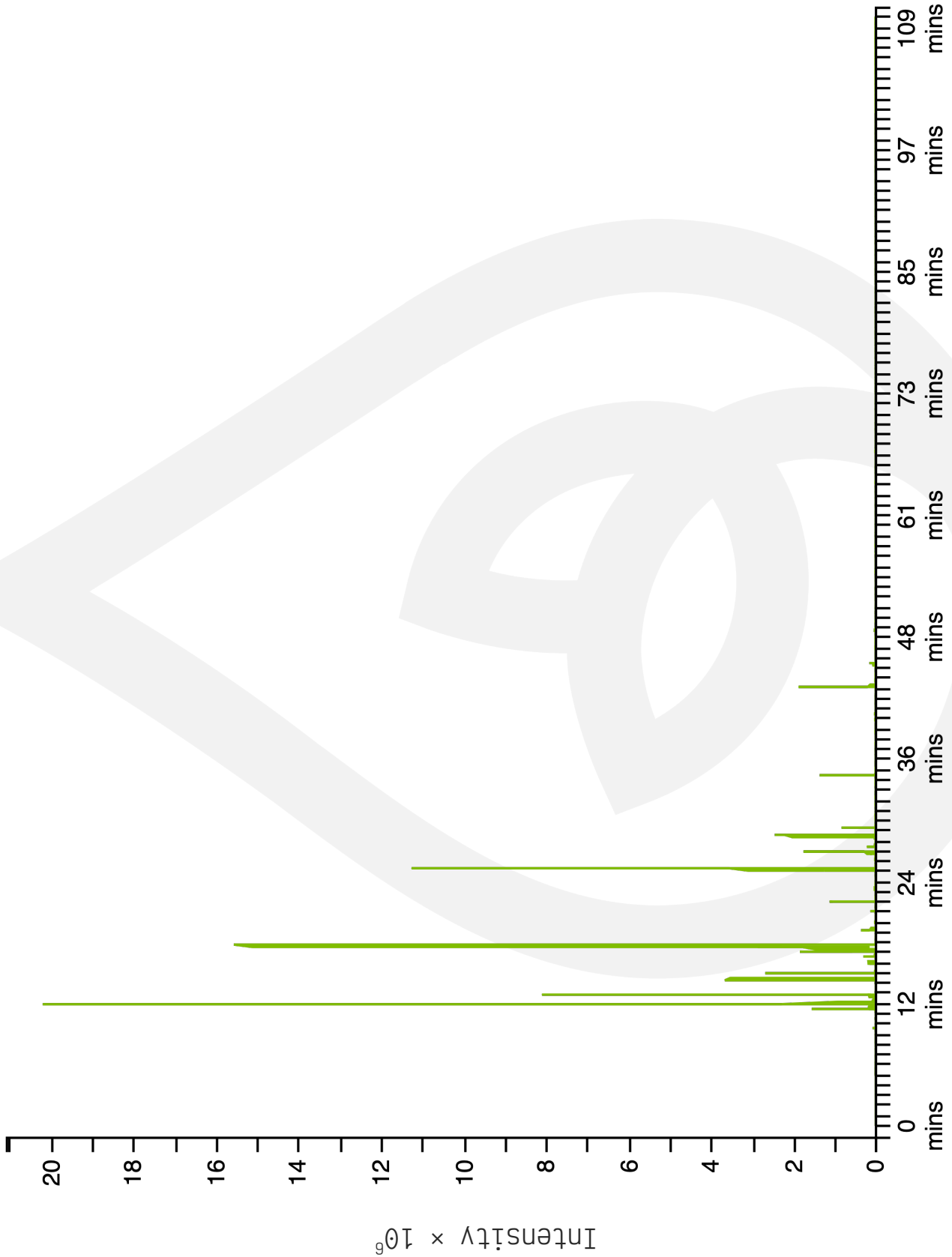
GC/MS Report
Components

Ret. Time	Component	Ret. Idx.	Conc. %
45.710	Unidentified	1451	0.01%
45.839	alpha-Humulene	1453	0.22%
47.060	gamma-Murolene	1473	0.01%
47.319	alpha-Amorphene	1477	0.01%
49.095	beta-Bisabolene	1506	0.03%
49.395	gamma-Cadinene	1511	0.01%
49.696	delta-Cadinene	1516	0.02%
51.053	alpha-Calacorene	1539	0.01%
53.447	Caryophyllene oxide	1580	0.03%
63.716	Benzyl benzoate	1764	0.01%
72.889	meta-Camphorene	1945	0.03%
74.618	para-Camphorene	1981	0.01%

Total Identified Compounds **99.91 %**

GC/MS Report: Chromatogram

TIC
20,187,895



*ROS0FF1 *Rosmarinus officinalis*

L0H0813S

8/15/2024

4