

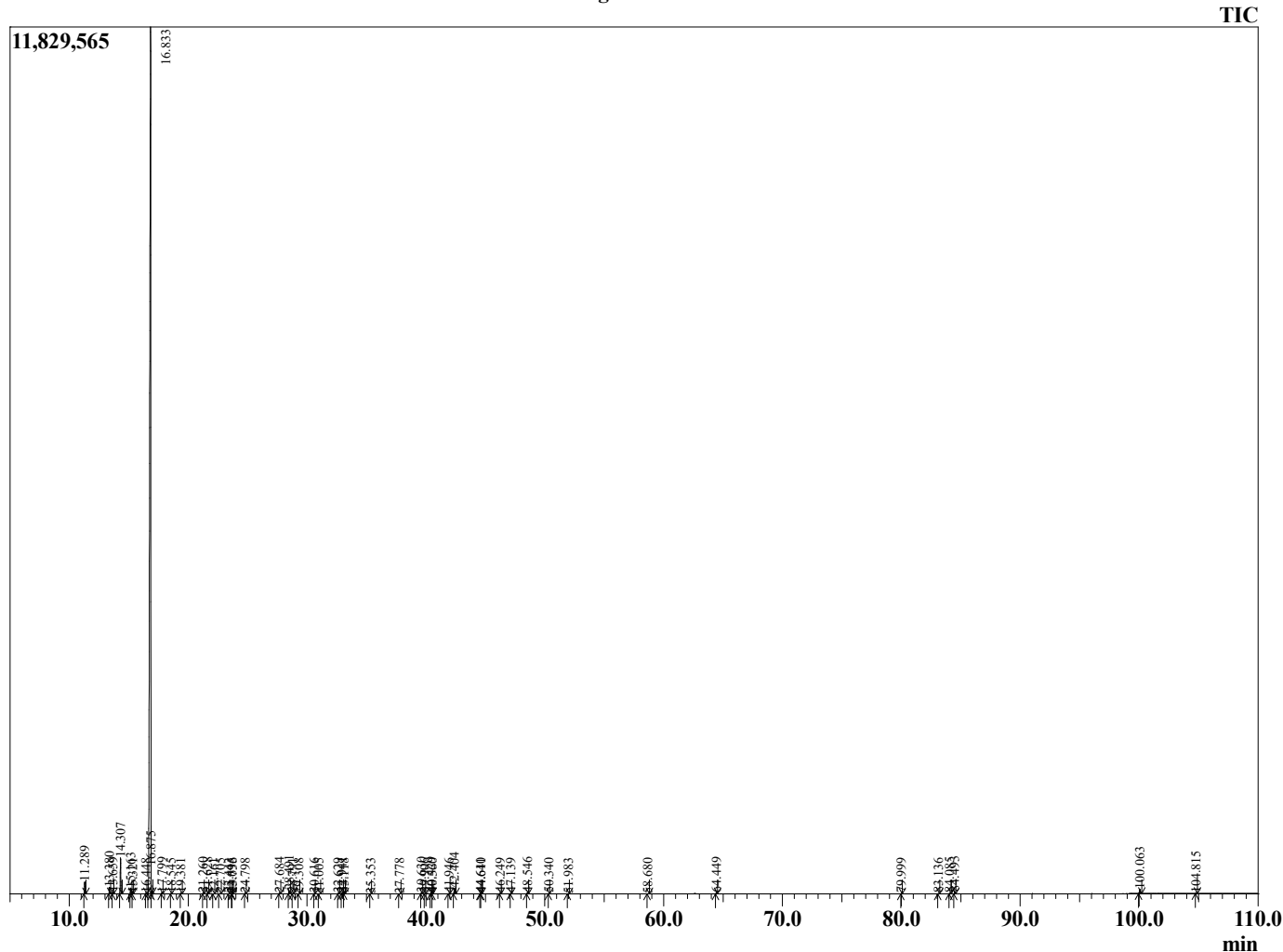
Sample Information

Analyzed by : KS
 Analyzed : 10/6/2023 1:02:05 PM
 Sample Type : Essential Oil
 Sample Name : Pink Grapefruit Essential Oil
 Injection Volume : 0.10 µL
 Lot Number : 98401-15
 Instrument ID : GC-2

Peak Report TIC

R.Time	Name	Area%
11.289	alpha-Pinene	0.62
13.380	Sabinene	0.37
13.659	beta-Pinene	0.09
14.307	Myrcene	2.04
15.163	Octanal	0.35
15.321	alpha-Phellandrene	0.04
16.448	para-Cymene	0.04
16.833	Limonene	93.56
16.875	beta-Phellandrene	0.44
17.799	trans-beta-Ocimene	0.07
18.545	gamma-Terpinene	0.02
19.381	1-Octanol	0.04
21.260	Linalool	0.07
21.628	Nonanal	0.06
22.161	trans-4,8-Dimethyl-nona-1,3,7-triene	0.01
22.705	trans-para-Mentha-2,8-dienol	0.02
23.443	cis-Limonene oxide	0.01
23.695	Unidentified	0.00
23.736	trans-Limonene oxide	0.02
24.798	Citronellal	0.03
27.684	alpha-Terpineol	0.07
28.491	Decanal	0.22
28.791	Octyl acetate	0.02
29.308	trans-Carveol	0.01
30.616	Neral	0.02
31.005	Carvone	0.01
32.629	Geranial	0.05
32.941	trans-Cinnamaldehyde	0.06
33.118	Perillaldehyde	0.01
35.353	Unidentified	0.01
37.778	Unidentified	0.01
39.630	alpha-Copaene	0.09
39.906	Geranyl acetate	0.01
40.429	beta-Cubebene	0.06
40.560	beta-Elemene	0.02
41.946	Unidentified	0.02
42.404	beta-Caryophyllene	0.45
44.610	trans-beta-Farnesene	0.02
44.641	alpha-Humulene	0.03
46.249	Germacrene D	0.05
47.139	Bicyclogermacrene	0.01
48.546	delta-Cadinene	0.08
50.340	alpha-Elemol	0.02
51.983	Unidentified	0.01
58.680	beta-Sinensal	0.01
64.449	Nootkatone	0.07
79.999	Ostole	0.02
83.136	Unidentified	0.01
84.085	Unidentified Furanocoumarin	0.08
84.493	Unidentified	0.15
100.063	Aurapten	0.37
104.815	Unidentified	0.03
		100.00

Chromatogram 98401-15



This report is provided as a courtesy to our customers for their evaluation only. Any publishing, copying, use, dissemination, or distribution of this report, including online, without the express written permission of Shay and Company is strictly prohibited. To inquire about licensing analytical reporting services, please contact orders@shayandcompany.com