



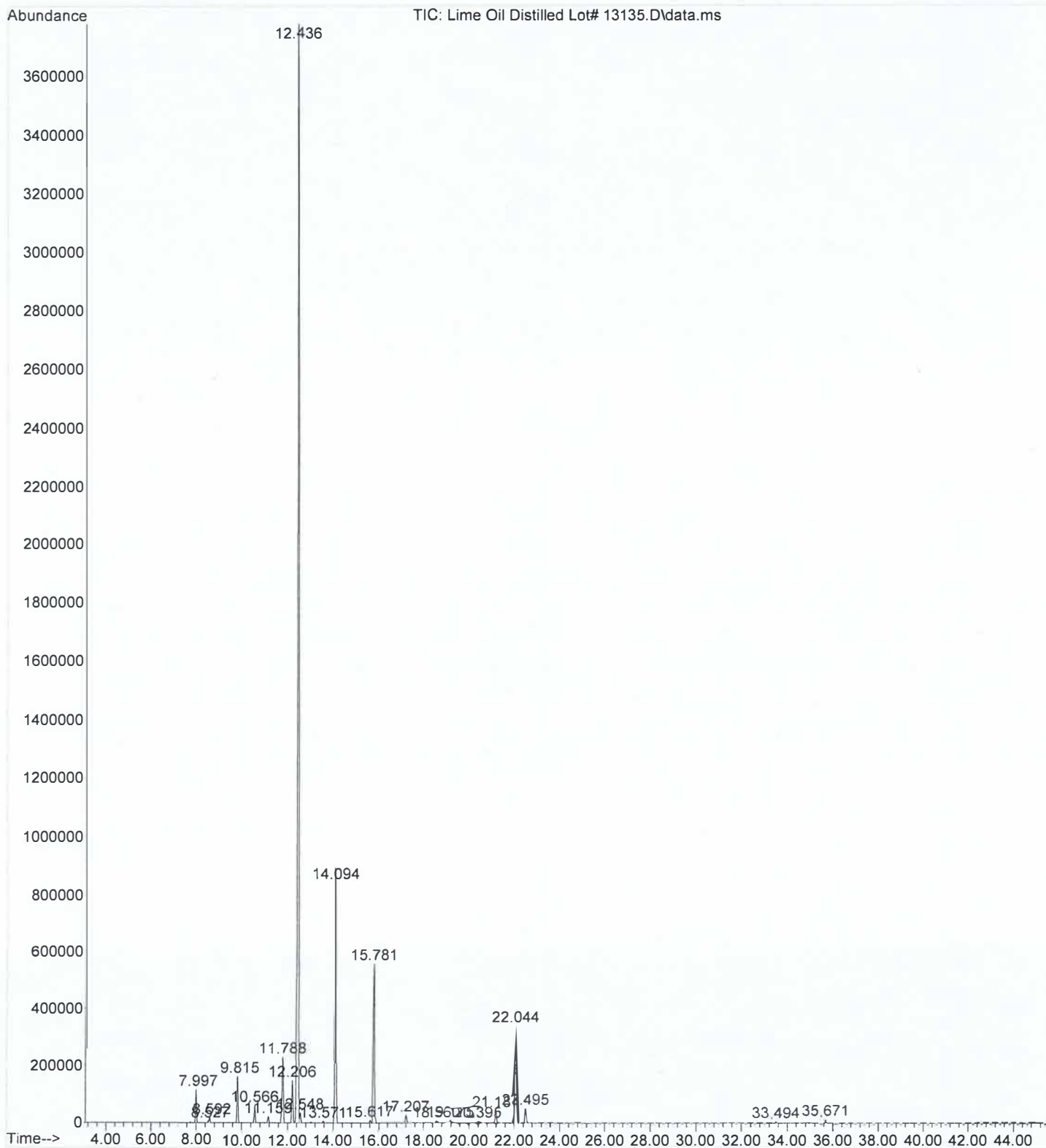
LIME OIL DISTILLED (MEXICO)

CHEMICAL COMPOSITION (GC-MS)

LOT NO. 13135

COMPOUND	CONTENT (%)	SPECIFICATION
ISO CINEOLE	3.76 (COLEUTED)	MAX 2.5 %
ALPHA TERPINENE		MAX 2.7%
GAMMA TERPINENE	21.80	9 – 13 %
ALPHA TERPINEOL	6.08	6 – 10 %
GAMMA TERPINEOL	0.91	0.7 – 1.7 %
LIMONENE	58.20	36 – 60 %

File :C:\msdchem\1\data\2024\05-13-24\Lime Oil Distilled Lot# 13135
... 6.D
Operator : DMW
Instrument : GCMS
Acquired : 13 May 2024 13:14 using AcqMethod METHOD_7.M
Sample Name: Lime Oil Distilled Lot# 13135
Misc Info :



Area Percent Report

Data Path : C:\msdchem\1\data\2024\05-13-24\
 Data File : Lime Oil Distilled Lot# 13135.D
 Acq On : 13 May 2024 13:14
 Operator : DMW
 Sample : Lime Oil Distilled Lot# 13135
 Misc :
 ALS Vial : 77 Sample Multiplier: 1

Integration Parameters: autoint1.e
 Integrator: ChemStation

Method : C:\msdchem\1\methods\METHOD_7.M
 Title : Eoil Qualitative

Signal : TIC: Lime Oil Distilled Lot# 13135.D\data.ms

peak #	R.T. min	first scan	max scan	last scan	PK TY	peak height	corr. area	corr. % max.	% of total
1	7.997	847	859	873	BB 2	114050	3245722	2.21%	1.284%
2	8.527	942	952	956	BV 6	6643	168245	0.11%	0.067%
3	8.592	956	963	975	VB 4	17901	558259	0.38%	0.221%
4	9.815	1163	1177	1193	PB 3	160475	5256004	3.57%	2.079%
5	10.566	1295	1308	1323	BV	59774	1892373	1.29%	0.749%
6	11.159	1398	1412	1426	BB 2	22047	766557	0.52%	0.303%
7	11.788	1501	1522	1539	BB 3	229852	9503227	6.46%	3.760%
8	12.206	1579	1595	1612	BV 2	146332	5365184	3.65%	2.123%
9	12.436	1612	1635	1648	VV	3770837	147131238	100.00%	58.207%
10	12.548	1648	1655	1677	VB 6	35339	1263825	0.86%	0.500%
11	13.571	1821	1833	1850	BB 5	6283	216165	0.15%	0.086%
12	14.094	1906	1925	1944	BB	837801	32352718	21.99%	12.799%
13	15.617	2179	2191	2202	BV 4	9994	374817	0.25%	0.148%
14	15.781	2202	2220	2240	VV 2	554579	22610434	15.37%	8.945%
15	17.207	2454	2469	2491	BV 5	28101	1135509	0.77%	0.449%
16	18.560	2695	2705	2720	BV 6	7330	271803	0.18%	0.108%
17	19.175	2801	2813	2828	BV 7	9332	379536	0.26%	0.150%
18	20.395	3013	3026	3041	BV 6	6465	271077	0.18%	0.107%
19	21.184	3147	3164	3184	BV 6	43760	1933218	1.31%	0.765%
20	22.044	3296	3314	3338	BV 3	339556	15359729	10.44%	6.077%
21	22.495	3377	3393	3428	BV 4	51466	2297171	1.56%	0.909%
22	33.494	5307	5315	5325	BB 5	5075	126479	0.09%	0.050%
23	35.671	5687	5696	5705	BB 3	12957	292104	0.20%	0.116%

Sum of corrected areas: 252771394