



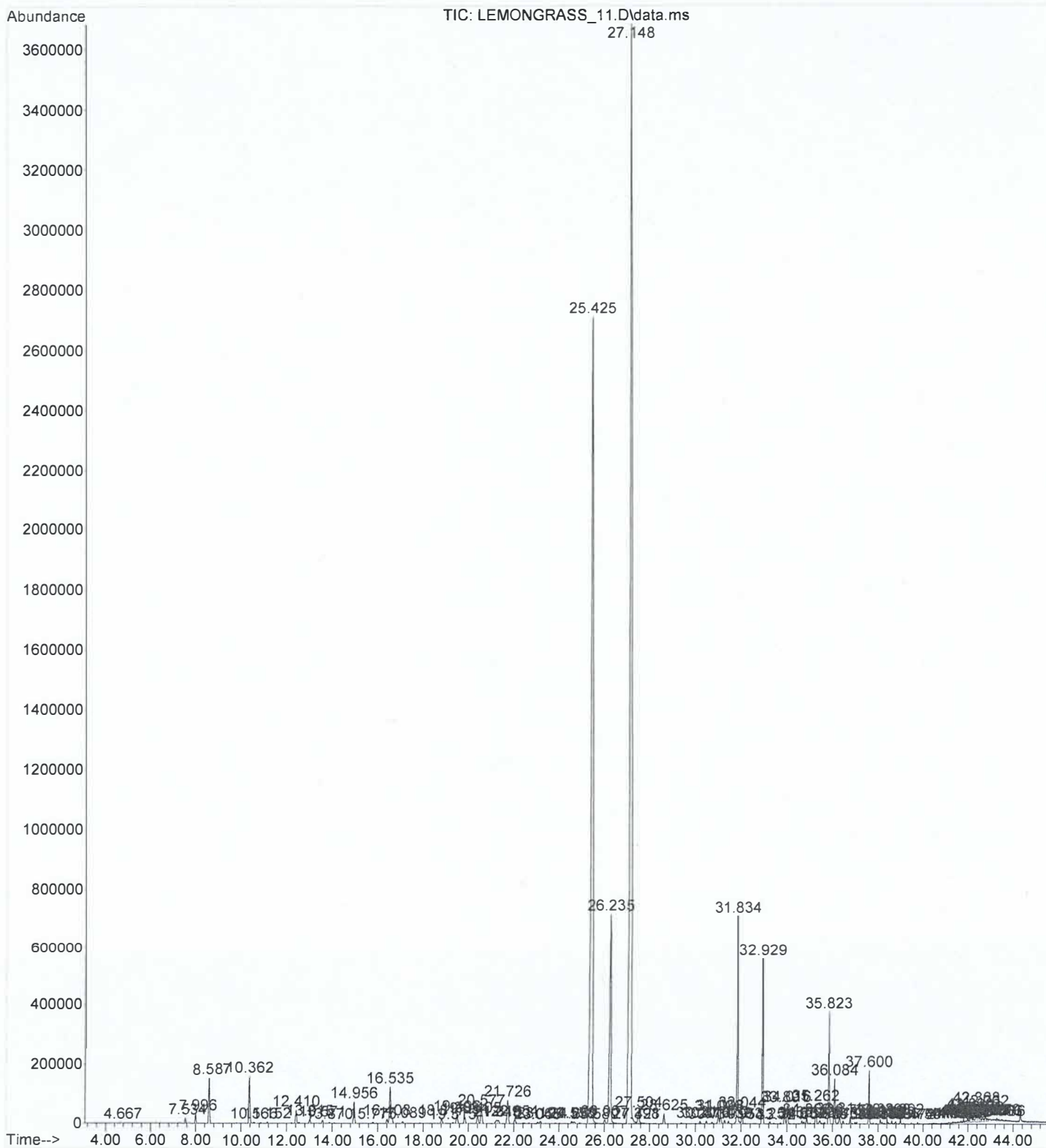
**LEMONGRASS OIL**

**CHEMICAL COMPOSITION (GC-MS)**

**LOT NO. 13115**

<b>PEAK RT</b>	<b>COMPOUND</b>	<b>CONTENT (%)</b>	<b>SPECIFICATION</b>
10.36	METHYL HEPTENONE	0.98	0.1 – 2 %
12.41	LIMONENE	0.30	0.4 – 3.5 %
25.42	NERAL	30.23	25 – 35 %
26.23	GERANIOL	6.00	1.5 – 7 %
27.14	GERANIAL	40.64	35 – 47 %
31.83	GERANYL ACETATE	3.84	0.5 – 6 %

File :C:\msdchem\1\data\2024\10-03-24\LEMONGRASS\_11.D  
Operator : SS  
Acquired : 3 Oct 2024 21:15 using AcqMethod METHOD\_7.M  
Instrument : GCMS  
Sample Name: LEMONGRASS OIL  
Misc Info : 13115  
Vial Number: 11



## Area Percent Report

Data Path : C:\msdchem\1\data\2024\10-03-24\  
Data File : LEMONGRASS\_11.D  
Acq On : 3 Oct 2024 21:15  
Operator : SS  
Sample : LEMONGRASS OIL  
Misc : 13115  
ALS Vial : 11 Sample Multiplier: 1

Integration Parameters: autoint1.e  
Integrator: ChemStation

Method : C:\msdchem\1\methods\METHOD\_7.M  
Title : Eoil Qualitative

Signal : TIC: LEMONGRASS\_11.D\data.ms

peak #	R.T. min	first scan	max scan	last scan	PK TY	peak height	corr. area	corr. % max.	% of total
1	4.667	271	277	283	BB	3369	50563	0.02%	0.010%
2	7.534	768	778	790	BB 3	18026	492601	0.23%	0.093%
3	7.996	849	859	870	BB 2	32457	924877	0.43%	0.175%
4	8.587	950	962	977	BB 3	149856	4599373	2.15%	0.872%
5	10.362	1261	1272	1291	BV 2	155713	5184706	2.42%	0.983%
6	10.566	1291	1308	1329	PB 6	4149	166619	0.08%	0.032%
7	11.152	1401	1410	1422	BB 7	4653	142175	0.07%	0.027%
8	12.410	1616	1630	1644	BV 4	44772	1599450	0.75%	0.303%
9	13.015	1723	1736	1748	BB 4	13992	502267	0.23%	0.095%
10	13.571	1821	1833	1845	BB 6	10876	383898	0.18%	0.073%
11	13.870	1875	1886	1898	BV 3	3358	114580	0.05%	0.022%
12	14.956	2057	2075	2097	BB 2	72434	2797645	1.31%	0.531%
13	15.775	2209	2218	2233	BV 6	4116	166492	0.08%	0.032%
14	16.408	2316	2329	2338	BV 4	15566	557335	0.26%	0.106%
15	16.535	2338	2351	2387	VV 5	119706	5689810	2.66%	1.079%
16	17.089	2434	2448	2460	BB 6	7181	260331	0.12%	0.049%
17	18.817	2736	2750	2768	BB 6	15675	632223	0.30%	0.120%
18	19.315	2824	2837	2853	BB 4	3522	127559	0.06%	0.024%
19	19.496	2853	2869	2889	BV 5	30122	1320177	0.62%	0.250%
20	19.834	2913	2928	2953	BB 8	22674	996880	0.47%	0.189%
21	20.405	3012	3028	3043	BV 4	25279	1122269	0.52%	0.213%
22	20.577	3043	3058	3091	VV 5	49713	2185605	1.02%	0.414%
23	21.249	3147	3175	3181	BV 8	12352	666260	0.31%	0.126%
24	21.315	3181	3187	3208	VB 7	11840	520360	0.24%	0.099%
25	21.726	3241	3258	3284	BV 4	78139	3445597	1.61%	0.653%
26	22.054	3301	3316	3335	BB 6	14037	658099	0.31%	0.125%
27	23.045	3481	3489	3490	BV 3	4535	74934	0.03%	0.014%
28	23.065	3490	3493	3502	VV 4	5425	127366	0.06%	0.024%
29	23.190	3502	3514	3527	VB 6	8242	352077	0.16%	0.067%
30	24.558	3741	3753	3755	BV 3	7631	163472	0.08%	0.031%
31	24.578	3755	3757	3764	VV 4	7917	186140	0.09%	0.035%
32	24.662	3764	3772	3792	VV 9	6551	311544	0.15%	0.059%
33	25.425	3871	3905	3931	BV 2	2701455	159428839	74.40%	30.233%
34	25.580	3931	3932	3941	VV 6	3262	60443	0.03%	0.011%
35	26.007	3994	4007	4023	BV 4	13579	547121	0.26%	0.104%
36	26.235	4023	4046	4076	PV 2	715229	31665267	14.78%	6.005%
37	27.148	4170	4206	4248	BV	3674460	214294191	100.00%	40.638%
38	27.398	4248	4250	4252	VV 3	4424	55061	0.03%	0.010%
39	27.421	4252	4254	4256	VV 3	3713	43672	0.02%	0.008%
40	27.504	4256	4268	4289	VV 4	41675	1671993	0.78%	0.317%

41	28.625	4449	4464	4479	PV 4	34798	1133402	0.53%	0.215%
42	30.201	4727	4740	4756	PV 2	9269	290579	0.14%	0.055%
43	30.476	4778	4788	4800	BB 4	9007	276120	0.13%	0.052%
44	30.719	4818	4830	4841	BV 6	4878	144534	0.07%	0.027%
45	31.005	4860	4880	4888	BV 10	32107	1099886	0.51%	0.209%
46	31.098	4888	4896	4913	VV 7	32144	1106531	0.52%	0.210%
47	31.270	4913	4926	4943	PV 6	12159	366053	0.17%	0.069%
48	31.439	4943	4956	4967	PV 4	9098	267878	0.13%	0.051%
49	31.834	5001	5025	5044	BV	708989	20254550	9.45%	3.841%
50	31.954	5044	5046	5050	VV 5	5057	95198	0.04%	0.018%
51	32.044	5050	5062	5075	VV 5	42760	1331026	0.62%	0.252%
52	32.929	5203	5216	5234	BV 2	555007	16890701	7.88%	3.203%
53	33.251	5265	5273	5280	VV 5	6793	174012	0.08%	0.033%
54	33.721	5335	5355	5365	PV 4	3703	99795	0.05%	0.019%
55	33.891	5365	5384	5397	PV 2	61224	1831887	0.85%	0.347%
56	34.016	5397	5406	5421	VV 2	62437	1888076	0.88%	0.358%
57	34.652	5507	5517	5525	BV 5	9765	261512	0.12%	0.050%
58	34.732	5525	5531	5543	VV 4	6576	180110	0.08%	0.034%
59	34.862	5543	5554	5565	VV 5	21055	628464	0.29%	0.119%
60	35.262	5614	5624	5634	VV 4	64979	1842822	0.86%	0.349%
61	35.433	5638	5654	5664	VV 6	11162	442114	0.21%	0.084%
62	35.639	5682	5690	5702	VV 4	4725	144016	0.07%	0.027%
63	35.823	5702	5722	5746	PV	375147	11820515	5.52%	2.242%
64	36.084	5752	5768	5785	PV 2	149913	4199423	1.96%	0.796%
65	36.311	5785	5807	5820	VV 6	24047	932649	0.44%	0.177%
66	36.464	5824	5834	5853	PV 6	9403	287150	0.13%	0.054%
67	36.770	5877	5888	5898	BV 5	18555	507408	0.24%	0.096%
68	36.982	5910	5925	5933	VV 6	5415	140116	0.07%	0.027%
69	37.061	5933	5938	5948	VV 5	5730	139069	0.06%	0.026%
70	37.600	6012	6033	6045	BV 3	175162	4075506	1.90%	0.773%
71	37.787	6060	6065	6072	VV 4	3942	75910	0.04%	0.014%
72	38.098	6111	6120	6125	PV 3	15104	313540	0.15%	0.059%
73	38.144	6125	6128	6131	VV 4	4377	70098	0.03%	0.013%
74	38.185	6131	6135	6144	VV 4	6331	126356	0.06%	0.024%
75	38.398	6165	6172	6178	VV 3	21102	346794	0.16%	0.066%
76	38.456	6178	6182	6189	VV 5	5138	103289	0.05%	0.020%
77	38.609	6198	6209	6215	PV 5	10578	235585	0.11%	0.045%
78	38.786	6234	6240	6257	VV 5	7853	214662	0.10%	0.041%
79	38.992	6270	6276	6283	VV 3	21340	363202	0.17%	0.069%
80	39.472	6356	6360	6365	VV 2	4649	60959	0.03%	0.012%
81	39.750	6402	6408	6412	PV 2	4802	66356	0.03%	0.013%
82	41.148	6651	6653	6657	VV 4	2657	30780	0.01%	0.006%
83	41.333	6680	6685	6690	BV 5	4515	69371	0.03%	0.013%
84	41.547	6720	6722	6727	VV 6	3659	62181	0.03%	0.012%
85	41.701	6744	6749	6756	VV 10	5564	116593	0.05%	0.022%
86	41.763	6756	6760	6764	VV 7	4686	70503	0.03%	0.013%
87	41.803	6764	6767	6776	VV 3	13647	254647	0.12%	0.048%
88	41.874	6776	6780	6783	VV 4	5643	90636	0.04%	0.017%
89	41.917	6783	6787	6792	VV 7	5633	117871	0.06%	0.022%
90	41.974	6792	6797	6801	VV 6	13793	254785	0.12%	0.048%
91	42.009	6801	6803	6806	VV 4	8988	119335	0.06%	0.023%
92	42.035	6806	6808	6813	VV 6	6768	164722	0.08%	0.031%
93	42.090	6813	6817	6820	VV	30546	430033	0.20%	0.082%
94	42.143	6820	6827	6838	VV	26621	876881	0.41%	0.166%
95	42.230	6838	6842	6848	VV 7	14708	368266	0.17%	0.070%
96	42.368	6855	6866	6874	VV 2	52139	1562966	0.73%	0.296%



97	42.451	6874	6880	6888	VV 2	21172	752070	0.35%	0.143%
98	42.526	6888	6893	6900	VV 8	20784	525299	0.25%	0.100%
99	42.646	6905	6914	6923	VV 8	10858	498035	0.23%	0.094%
100	42.708	6923	6925	6929	VV 5	9462	165488	0.08%	0.031%
101	42.762	6929	6935	6941	VV 2	41239	799964	0.37%	0.152%
102	42.805	6941	6942	6947	VV 5	10051	188800	0.09%	0.036%
103	42.871	6947	6954	6958	VV 10	9566	262229	0.12%	0.050%
104	43.270	7019	7024	7031	VV 10	9260	228417	0.11%	0.043%
105	43.366	7031	7040	7046	VV 10	5236	142254	0.07%	0.027%
106	43.486	7058	7061	7065	VV 6	4275	57825	0.03%	0.011%

Sum of corrected areas: 527327678

METHOD\_7.M Tue Mar 18 10:50:57 2025