



**LEMON OIL**

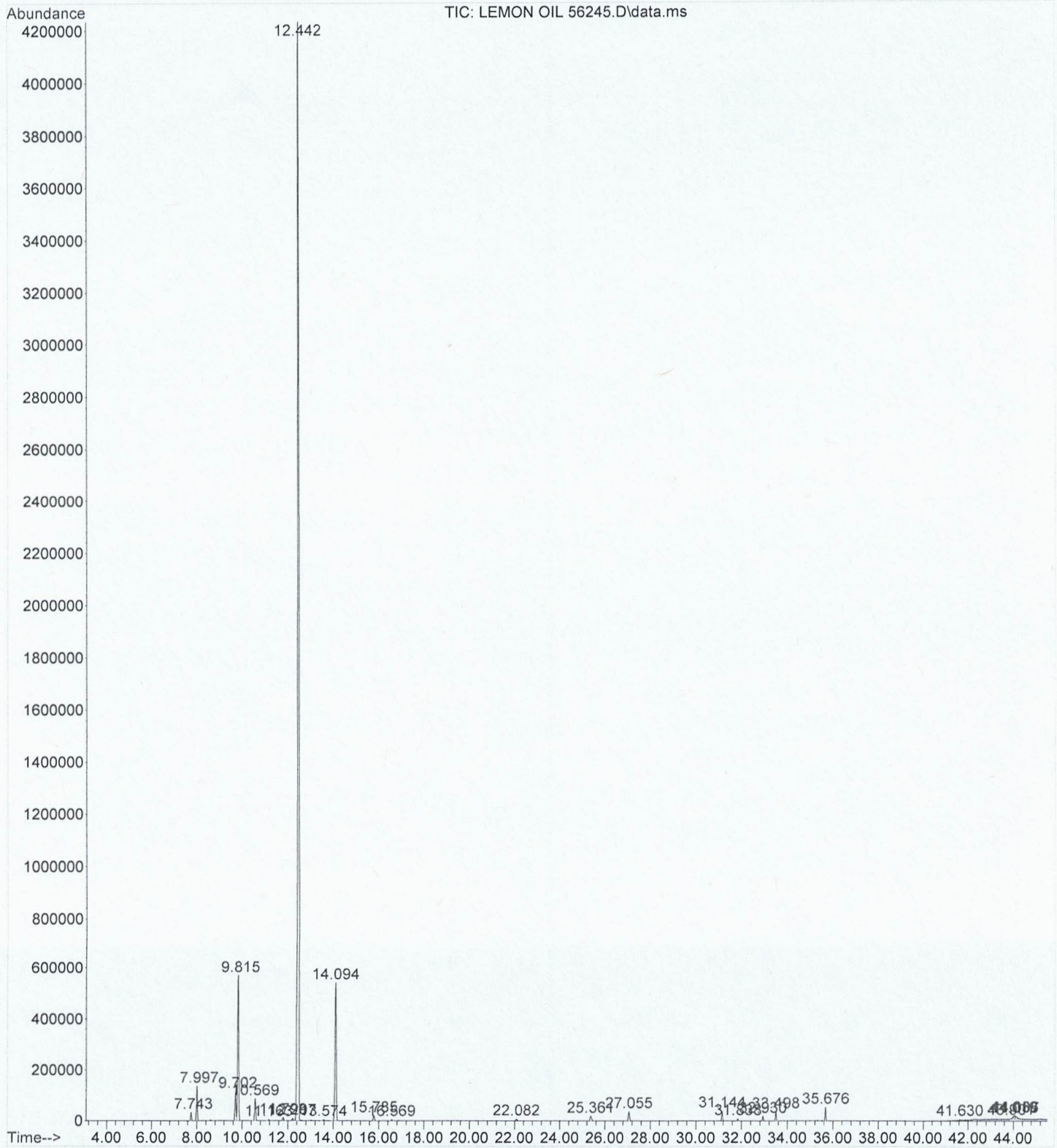
**CHEMICAL COMPOSITION (GC-MS)**

**LOT NO.13135**

<b>PEAK RT</b>	<b>COMPOUND</b>	<b>CONTENT (%)</b>	<b>SPECIFICATION</b>
7.99	ALPHA PINENE	1.73	MAX 2.5 %
9.81	BETA PINENE	8.35	2.5 – 15 %
10.57	MYRCENE	1.23	1 - 2.5 %
12.20	PARA CYMENE	0.14	MAX 0.5 %
12.44	LIMONENE	73.32	60 – 75 %
14.09	GAMMA TERPINENE	9.02	2.5 – 10 %
15.78	TERPINOLENE	0.35	≤ 1 %
25.36, 27.05	CITRAL	0.95	0.5 - 2.5 %

The composition of the oil meets the specifications of pure LEMON OIL

File :C:\msdchem\1\data\2024\04-11-24\LEMON OIL 56245.D  
Operator : DMW  
Acquired : 11 Apr 2024 15:06 using AcqMethod METHOD\_7.M  
Instrument : GCMS  
Sample Name: LEMON OIL  
Misc Info :  
Vial Number: 16



Area Percent Report

Data Path : C:\msdchem\1\data\2024\04-11-24\  
 Data File : LEMON OIL 56403.D  
 Acq On : 11 Apr 2024 15:06  
 Operator : DMW  
 Sample : LEMON OIL  
 Misc :  
 ALS Vial : 16 Sample Multiplier: 1

Integration Parameters: autoint1.e  
 Integrator: ChemStation

Method : C:\msdchem\1\methods\METHOD\_7.M  
 Title : Eoil Qualitative

Signal : TIC: LEMON OIL 56245.D\data.ms

peak #	R.T. min	first scan	max scan	last scan	PK TY	peak height	corr. area	corr. % max.	% of total
1	7.743	800	815	829	BB 2	32106	899587	0.53%	0.392%
2	7.997	845	859	874	BB	135728	3984848	2.36%	1.735%
3	9.702	1124	1157	1166	BV 2	115401	3584082	2.12%	1.560%
4	9.815	1166	1177	1205	VV 2	569074	19239812	11.40%	8.375%
5	10.569	1291	1309	1324	BV 2	86635	2819923	1.67%	1.228%
6	11.799	1505	1524	1543	BB 5	12007	432875	0.26%	0.188%
7	12.207	1583	1595	1611	PV 4	9000	313335	0.19%	0.136%
8	12.442	1611	1636	1654	PV	4246697	168817705	100.00%	73.490%
9	14.094	1890	1925	1958	BV 3	538129	20774601	12.31%	9.044%
10	15.785	2189	2220	2239	BV 4	19950	812846	0.48%	0.354%
11	22.082	3304	3321	3341	BB 7	7225	328293	0.19%	0.143%
12	25.361	3861	3894	3921	BV 6	17791	858439	0.51%	0.374%
13	27.055	4178	4190	4209	PV 6	35894	1337451	0.79%	0.582%
14	31.144	4891	4904	4922	BV 3	37981	1114190	0.66%	0.485%
15	31.838	5012	5026	5043	BV 5	8156	232336	0.14%	0.101%
16	32.930	5208	5217	5229	VV 6	17426	511669	0.30%	0.223%
17	33.498	5293	5316	5332	BV 3	34976	990386	0.59%	0.431%
18	35.676	5687	5696	5719	BB 3	52041	1354846	0.80%	0.590%
19	44.058	7136	7161	7164	VV 3	11945	704008	0.42%	0.306%
20	44.085	7164	7166	7168	VV 3	10419	126729	0.08%	0.055%
21	44.107	7168	7170	7197	VV 3	10189	478643	0.28%	0.208%

Sum of corrected areas: 229716601

METHOD\_7.M Sat Oct 05 17:15:13 2024