



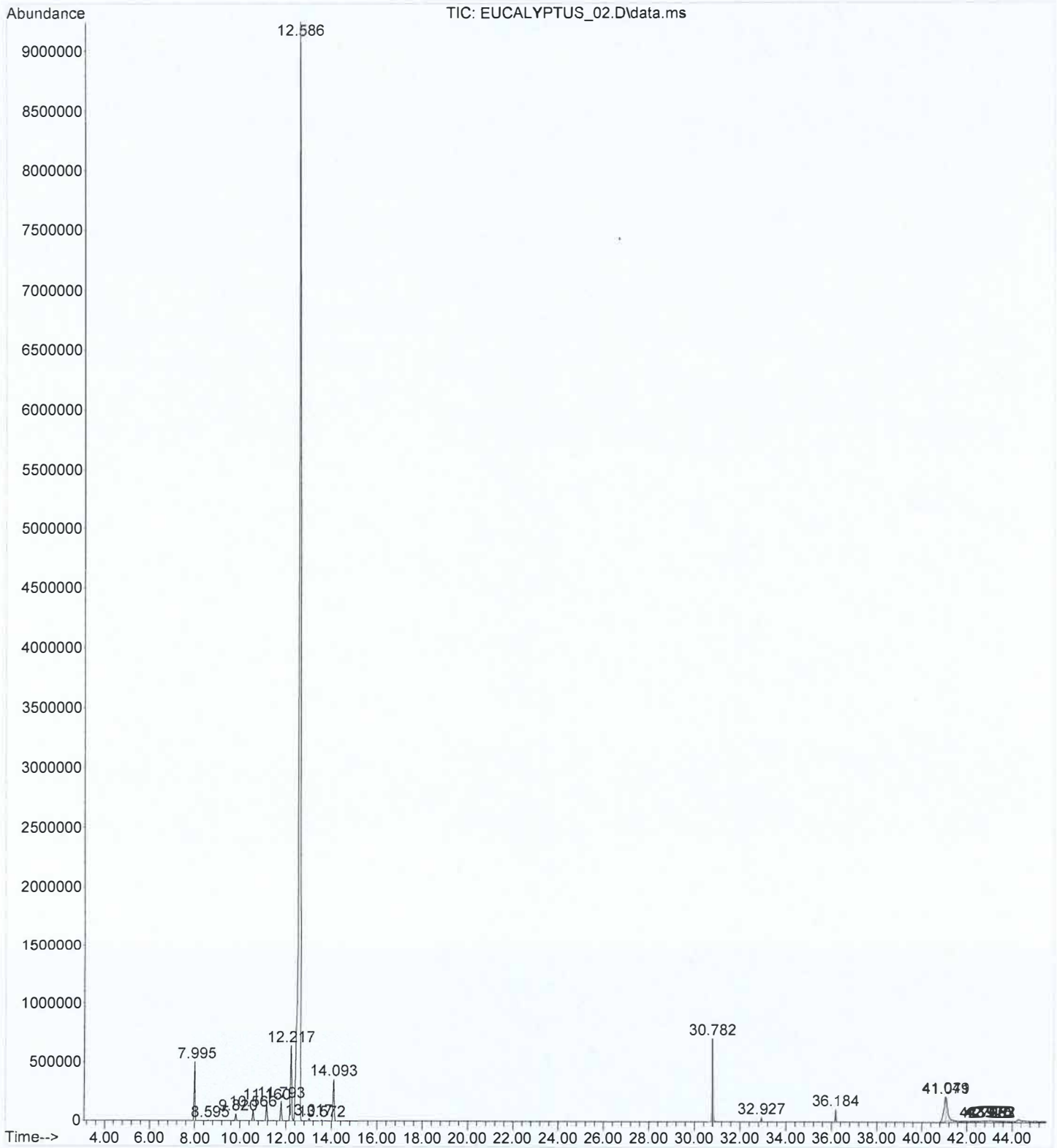
**EUCALYPTUS OIL**

**CHEMICAL COMPOSITION (GC-MS)**

**LOT NO. 55830**

<b>COMPOUND</b>	<b>CONTENT (%)</b>	<b>SPECIFICATION</b>
ALPHA PINENE	2.35	1 – 10 %
ALPHA PHELLANDRENE	0.85	0.1 - 1.0 %
LIMONENE	4.30	4 – 15 %
1,8 CINEOLE	80.72	79 - 85 %
AROMADENDRENE	0	MAX 1 %

File :C:\msdchem\1\data\2024\07-15-24\EUCALYPTUS\_02.D  
Operator : DMW  
Acquired : 15 Jul 2024 14:05 using AcqMethod METHOD\_7.M  
Instrument : GCMS  
Sample Name: EUCALYPTUS OIL LOT  
Misc Info : 12995  
Vial Number: 1



## Area Percent Report

Data Path : C:\msdchem\1\data\2024\07-15-24\  
Data File : EUCALYPTUS\_02.D  
Acq On : 15 Jul 2024 14:05  
Operator : DMW  
Sample : EUCALYPTUS OIL  
Misc : LOT 12995  
ALS Vial : 1 Sample Multiplier: 1

Integration Parameters: autoint1.e  
Integrator: ChemStation

Method : C:\msdchem\1\methods\METHOD\_7.M  
Title : Eoil Qualitative

Signal : TIC: EUCALYPTUS\_02.D\data.ms

peak #	R.T. min	first scan	max scan	last scan	PK TY	peak height	corr. area	corr. % max.	% of total
1	7.995	842	859	875	BB	499124	14670510	2.92%	2.354%
2	8.595	956	964	974	VB 4	3873	107382	0.02%	0.017%
3	9.820	1166	1178	1192	VV 2	57668	1894369	0.38%	0.304%
4	10.566	1289	1308	1329	BB 2	90889	2978844	0.59%	0.478%
5	11.160	1390	1412	1431	BV	150718	5305526	1.05%	0.851%
6	11.793	1502	1523	1538	BV 2	164157	5927158	1.18%	0.951%
7	12.217	1574	1597	1616	BV 2	637063	26824525	5.33%	4.305%
8	12.586	1616	1661	1681	PV	9202595	502942552	100.00%	80.714%
9	13.017	1720	1737	1751	BV 4	19258	696602	0.14%	0.112%
10	13.572	1811	1833	1846	BV 4	6979	244632	0.05%	0.039%
11	14.093	1903	1925	1945	BV 3	351811	13633893	2.71%	2.188%
12	30.782	4805	4841	4873	BV	695735	21250074	4.23%	3.410%
13	32.927	5201	5216	5228	BB 4	36617	1026711	0.20%	0.165%
14	36.184	5769	5785	5799	PV 2	103897	2546414	0.51%	0.409%
15	41.049	6584	6636	6638	PV 5	206849	11972497	2.38%	1.921%
16	41.071	6638	6639	6687	VV 3	200156	10880942	2.16%	1.746%
17	42.728	6923	6929	6932	VV 8	2071	28116	0.01%	0.005%
18	42.920	6960	6962	6967	PV 6	2276	22931	0.00%	0.004%
19	42.975	6967	6972	6976	PV 8	3170	45417	0.01%	0.007%
20	43.053	6976	6986	6991	VV 8	3038	93418	0.02%	0.015%
21	43.092	6991	6993	6996	VV 4	2562	21664	0.00%	0.003%

Sum of corrected areas: 623114177

METHOD\_7.M Thu Jan 09 14:22:22 2025