

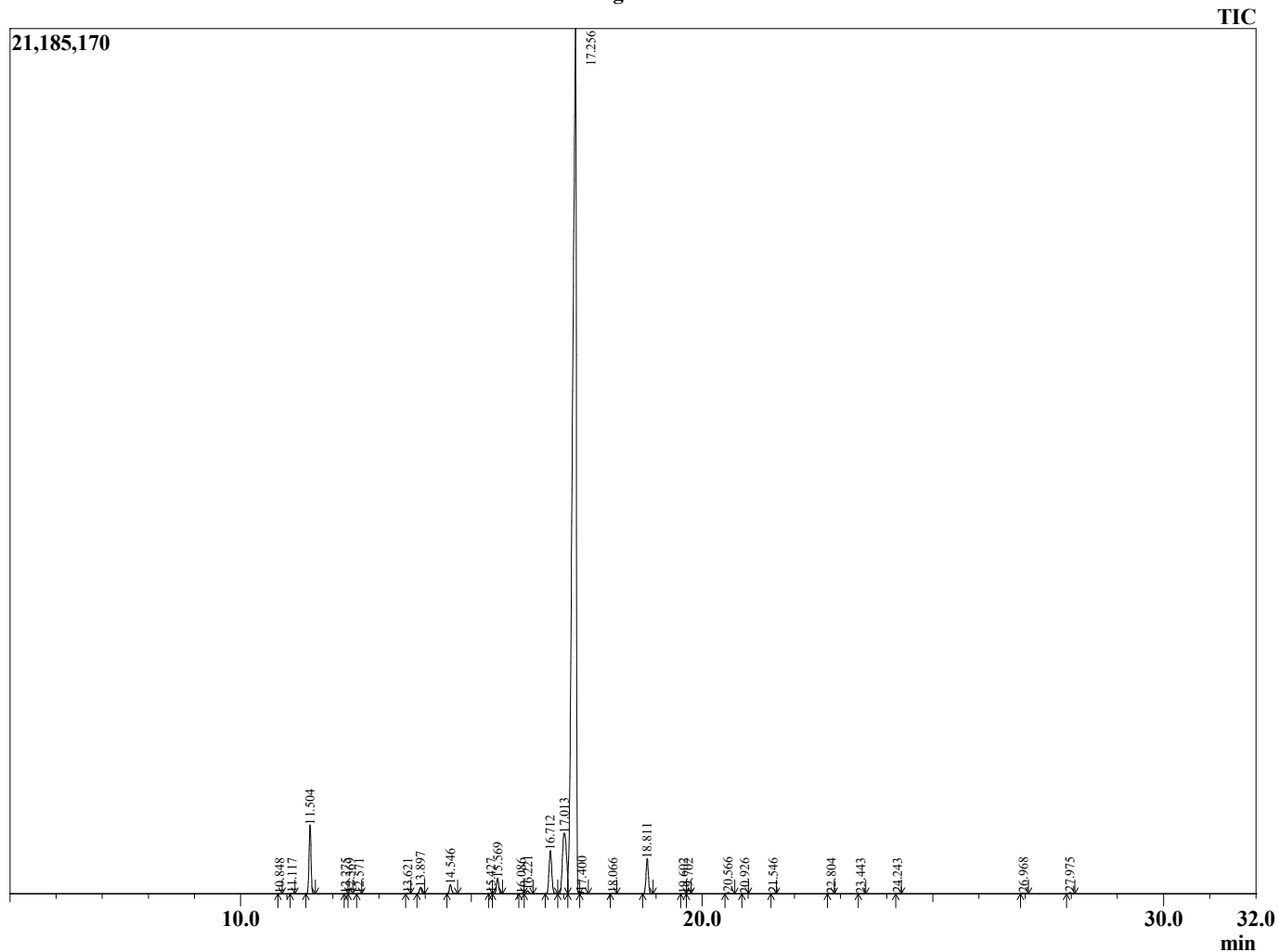
Sample Information

Analyzed by : KS
 Analyzed : 6/12/2023 7:14:56 PM
 Sample Type : Essential Oil
 Sample Name : Eucalyptus Essential Oil
 Injection Volume : 0.10 µL
 Lot Number : 12944
 Instrument ID : GC-2

Peak Report TIC

R.Time	Name	Area%
4.764	1-Pentanol	0.02
10.848	Hashishene	0.01
11.117	alpha-Thujene	0.02
11.504	alpha-Pinene	3.46
12.275	alpha-Fenchene	0.01
12.369	Camphene	0.02
12.571	Thuja-2,4(10)-diene	0.01
13.621	Sabinene	0.01
13.897	beta-Pinene	0.36
14.546	Myrcene	0.54
15.427	Pseudolimonene	0.01
15.569	alpha-Phellandrene	0.93
16.086	Unidentified	0.00
16.221	alpha-Terpinene	0.18
16.712	para-Cymene	3.01
17.013	Limonene	6.31
17.256	1,8-Cineole	82.62
17.400	cis-beta-Ocimene	0.11
18.066	trans-beta-Ocimene	0.02
18.811	gamma-Terpinene	2.10
19.602	cis-Linalool oxide (furanoid)	0.01
19.702	Pinol	0.01
20.566	Terpinolene	0.08
20.926	para-Cymenene	0.01
21.546	Linalool	0.01
22.804	Unidentified	0.01
23.443	allo-Ocimene	0.01
24.243	trans-Pinocarveol	0.01
26.968	Terpinen-4-ol	0.05
27.975	alpha-Terpineol	0.08
		100.00

Chromatogram 98401-4



This report is provided as a courtesy to our customers for their evaluation only. Any publishing, copying, use, dissemination, or distribution of this report, including online, without the express written permission of Shay and Company is strictly prohibited. To inquire about licensing analytical reporting services, please contact orders@shayandcompany.com