

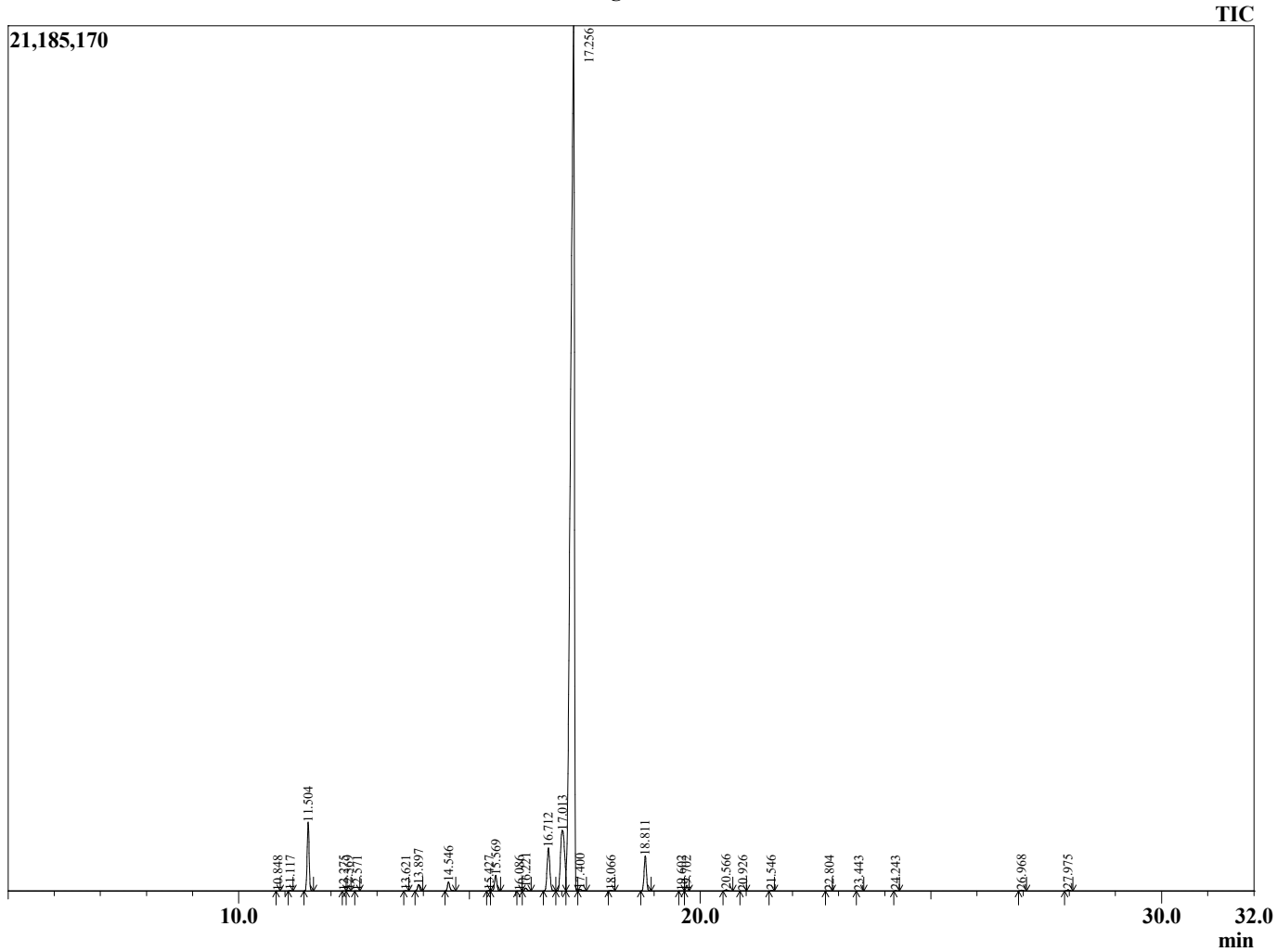
Sample Information

Analyzed by : KS
 Analyzed : 6/12/2023 7:14:56 PM
 Sample Type : Essential Oil
 Sample Name : Eucalyptus Essential Oil
 Injection Volume : 0.10 µL
 Lot Number : 12883
 Instrument ID : GC-2

Peak Report TIC

R.Time	Name	Area%
4.764	1-Pentanol	0.02
10.848	Hashishene	0.01
11.117	alpha-Thujene	0.02
11.504	alpha-Pinene	3.46
12.275	alpha-Fenchene	0.01
12.369	Camphene	0.02
12.571	Thuja-2,4(10)-diene	0.01
13.621	Sabinene	0.01
13.897	beta-Pinene	0.36
14.546	Myrcene	0.54
15.427	Pseudolimonene	0.01
15.569	alpha-Phellandrene	0.93
16.086	Unidentified	0.00
16.221	alpha-Terpinene	0.18
16.712	para-Cymene	3.01
17.013	Limonene	6.31
17.256	1,8-Cineole	82.62
17.400	cis-beta-Ocimene	0.11
18.066	trans-beta-Ocimene	0.02
18.811	gamma-Terpinene	2.10
19.602	cis-Linalool oxide (furanoid)	0.01
19.702	Pinol	0.01
20.566	Terpinolene	0.08
20.926	para-Cymenene	0.01
21.546	Linalool	0.01
22.804	Unidentified	0.01
23.443	allo-Ocimene	0.01
24.243	trans-Pinocarveol	0.01
26.968	Terpinen-4-ol	0.05
27.975	alpha-Terpineol	0.08
		100.00

Chromatogram 98401-4



This report is provided as a courtesy to our customers for their evaluation only.