



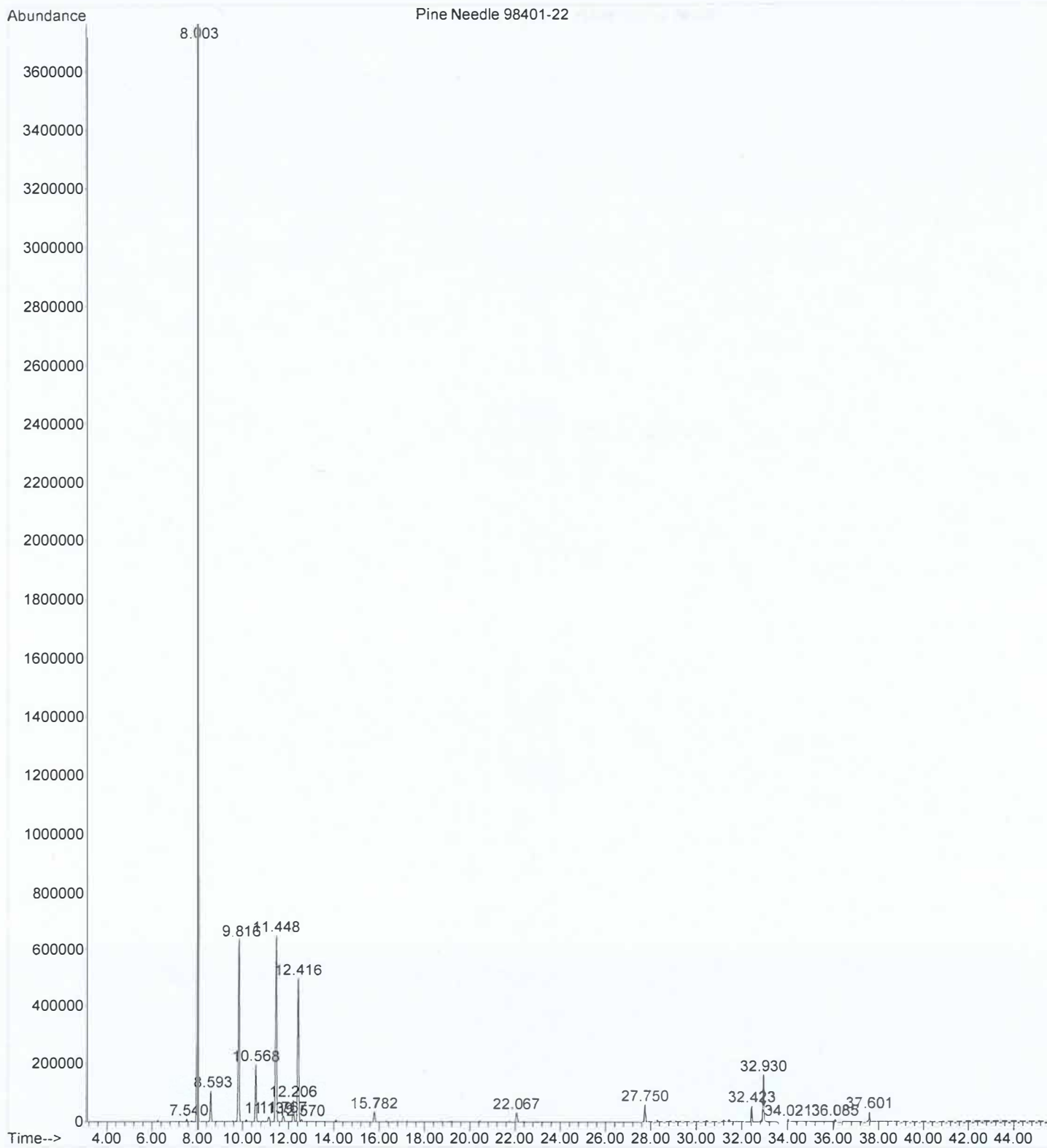
**Pine Needle Essential Oil 98401-22**

**CHEMICAL COMPOSITION (GC-MS)**

**LOT NO. 13045**

<b>PEAK RT</b>	<b>COMPOUND</b>	<b>CONTENT (%)</b>	<b>SPECIFICATION</b>
8.00	ALPHA PINENE	55.82	32 - 60 %
8.59	CAMPHENE	1.64	0.5 – 2 %
11.44	DELTA 3 CARENE	11.49	6 – 18 %
9.81	BETA PINENE	10.50	5 – 22 %
10.56	MYRCENE	3.09	1.5 – 10 %
12.41	D - LIMONENE	8.95	7 - 12 %
27.75	BORNYL ACETATE	1.04	1 - 4 %
12.20	PARA CYMENE	1.24	MAX 2 %
15.78	TERPINOLENE	0.68	MAX 4 %

File : Pine Needle Oil Lot# 13045  
Operator : DMW  
Acquired : 7 May 2024 20:57 using AcqMethod METHOD\_7.M  
Instrument : GCMS  
Sample Name: Pine Needle Oil Lot# 13045  
Misc Info :  
Vial Number: 55



Area Percent Report

Data Path : Pine Needle Essential Oil  
 Data File : Lot#13045  
 Acq On : 7 May 2024 20:57  
 Operator : DMW  
 Sample : Pine Needle Essential Oil  
 Misc :  
 ALS Vial : 55 Sample Multiplier: 1

Integration Parameters: autoint1.e  
 Integrator: ChemStation

Method : C:\msdchem\1\methods\METHOD\_7.M  
 Title : Eoil Qualitative

Signal : TIC: Pine Needle Essential Oil Lot# 13045

peak #	R.T. min	first scan	max scan	last scan	PK TY	peak height	corr. area	corr. % max.	% of total
1	7.540	770	779	789	BB 3	9225	232479	0.21%	0.115%
2	8.003	845	860	887	BB	3743868	112583253	100.00%	55.819%
3	8.593	947	963	984	BB 4	103613	3304900	2.94%	1.639%
4	9.816	1161	1177	1198	VV 2	637043	21182498	18.81%	10.502%
5	10.568	1295	1308	1325	BV 2	194615	6242163	5.54%	3.095%
6	11.139	1393	1408	1426	BV 4	15823	731923	0.65%	0.363%
7	11.448	1445	1462	1482	BV	651292	23165690	20.58%	11.486%
8	11.767	1505	1518	1534	BB 8	18690	943651	0.84%	0.468%
9	12.206	1581	1595	1612	BV 2	71228	2514346	2.23%	1.247%
10	12.416	1612	1631	1649	PV 2	492167	18068120	16.05%	8.958%
11	12.570	1649	1658	1675	VB 6	7331	271159	0.24%	0.134%
12	15.782	2204	2220	2240	BB 3	35309	1375487	1.22%	0.682%
13	22.067	3302	3318	3337	BV 6	32815	1472638	1.31%	0.730%
14	27.750	4295	4311	4334	BV 4	58080	2092180	1.86%	1.037%
15	32.423	5116	5128	5140	BV 6	53963	1649355	1.47%	0.818%
16	32.930	5204	5217	5229	BB 3	158486	4618067	4.10%	2.290%
17	34.021	5383	5407	5417	BB 5	7791	211501	0.19%	0.105%
18	36.085	5757	5768	5787	BB 4	8038	210327	0.19%	0.104%
19	37.601	6019	6033	6044	BB 4	32954	823324	0.73%	0.408%

Sum of corrected areas: 201693061

METHOD\_7.M Sun Oct 13 15:53:41 2024